



MONMOUTH

2016-17 WOMEN'S BASKETBALL

Athletic Communications Assistant: Chuck Marvel* cmarvel@monmouth.edu * 732-253-5834

PROVIDENCE vs MONMOUTH December 21, 2016 * 7:00 p.m.

OceanFirst Bank Center * West Long Branch, NJ

All-Time Series: Providence leads, 2-0. Last: PC won 71-59 (11/28/15)



Hawks
5-5, 0-2 MAAC

vs.



Friars
7-3, 0-0 Big East

GAME QUICK FACTS

MU head coach: Jenny Palmateer

Palmateer's career record: 74-93 (6th season)

Palmateer's MU record: same

Providence head coach: Jim Crowley

Crowley's career record: 304-270 (17th season)

Crowley's Providence record: 7-3 (1st season)

Live Video: ESPN3/ WatchESPN App

Play-by-Play: Eddy Occhipinti

Color: Steve Bazaz

Sideline: Suzi Mellano

Audio: WMCX 88.9

Live Stats: monmouth.statbroadcast.com

Twitter: www.twitter.com/MUHawksWBB

THE MONMOUTH LINEUP

PROBABLE STARTERS

Pos. #	Name	Ht.	Cl.	PPG	RPG	Misc.
G 4	Helena Kurt	5-5	Jr.	5.6	3.1*	Started 7 games this year (missed all of 2015-16 to injury)
G 12	Alaina Jarnot	5-7	Fr.	6.2	2.6*	5 assists each against Robert Morris and Hartford
F 13	Tyese Purvis	5-9	Sr.	12.8	2.5	Career-high 26 points (18 in Q4) in win at Eastern Michigan
C 14	Christina Mitchell	6-4	Sr.	5.5	5.6	Played 100th career game at Canisius on 12/04
F 20	McKinzee Barker	5-10	So.	3.4	3.8	Started 35 of 39 career games

RESERVES

G 2	Kayla Quintana	5-9	Jr.	3.0	2.4	JUCO transfer from Scottsdale C.C. 16 pts, 4 steals at Lehigh
G 3	Rosa Graham	5-7	Fr.	7.9	2.9*	14 points at RMU... 19 points, 6 assists, 5 steals at SFB
F 10	Dana Carbone	5-11	Jr.	2.0	0.8	14 points (5-8 FG, 4-7 3 pt FG) vs. Fairfield last year
G 11	Kayla Shaw	5-10	Fr.	10.5	1.8	Freshman from Scottsdale, AZ. Leads team with 27 3-pointers
G 21	Rhaiah Spooner-Knight	5-10	Sr.	13.8*	4.7*	Transfer from Utah Valley; Sitting out 2016-17 *Stats at UVU
F 22	Alexa Middleton	6-2	Fr.	6.0	6.3	Double-double at EMU (10 pts, 15 rebs)... 9 pts, 11 rebs vs FDU
F 23	Adriana Zelaya	6-2	Fr.	-	-	Freshman from Goodyear, AZ
C 24	Erica Balman	6-5	So.	0.4	0.7	5 rebounds at Lehigh
F 32	Taylor Nason	5-10	Fr.	4.3	8.1	Season-high 11 points at Canisius, 13 rebs at Eastern Michigan

*APG

Surviving a late push from Eastern Michigan, Monmouth University's women's basketball team earned its third straight win behind a career-high 26 points from senior Tyese Purvis, 75-68. Purvis scored 18 of those points in the fourth quarter, making three triples and hitting five clutch free throws. Freshman Alexa Middleton recorded the first double-double of the season for the Hawks, scoring a clutch 10th point while grabbing 15 rebounds on the night. Middleton has scored 19 points and secured 26 rebounds in the last two games. Classmate Taylor Nason grabbed 13 rebounds in the win at EMU, while four total Monmouth players hit double-figures. The Hawks improved to 5-5 on the season and set their sights on a fourth straight win when they host Providence on Wednesday. Monmouth's last non-conference game of the season will be broadcast on ESPN3 at 7:00 PM. The Hawks come into the game riding a three-game winning streak, while the Friars have dropped three straight.

SCOUTING THE PROVIDENCE FRIARS

Although Providence comes into Wednesday having lost three straight games, the Friars began the season 7-0 to produce a 7-3 record coming into Wednesday's matchup with Monmouth. Four Friars are averaging double-figures, led by sophomore guard Jovana Nagic (14.2 ppg). Sarah Beal is adding 12.4 points per game, while teammate Maddie Jolin is averaging 11.7 points per game off the bench. Allegra Botteghi is putting up 10.3 points per game and is second on the team with 6.3 rebounds per game.

ALL-TIME SERIES VS. PROVIDENCE

Since joining the Division 1 ranks, Monmouth has only faced Providence twice. The first meeting came during the 1983-84 season, and the Hawks fell again last year (33 years later) in Providence, RI, 71-59. Three Hawks scored in double-figures last season, including current players Tyese Purvis and Dana Carbone with 12 points each off the bench. Currently the second leading scorer for the Friars, Sarah Beal dropped 21 points while adding six rebounds and four assists in the win against Monmouth last year.

2016-17 SCHEDULE

DATE	OPPONENT	TIME/RESULT
11.13	at Robert Morris	W, 69-56
11.16	at St. Francis Brooklyn	L, 87-78
11.19	CLEMSON	L, 60-47
11.26	vs. Hartford#	L, 75-72
11.27	at Lehigh#	W, 73-62
12.02	at Niagara*	L, 66-45
12.04	at Canisius*	L, 74-54
12.08	at Sacred Heart	W, 65-54
12.10	FAIRLEIGH DICKINSON	W, 72-63
12.12	at Eastern Michigan	W, 75-68
12.21	PROVIDENCE	7 p.m.
01.02	MARIST*	2 p.m.
01.04	FAIRFIELD*	7 p.m.
01.07	SAINT PETER'S*	2 p.m.
01.12	at Siena*	5 p.m.
01.15	CANISIUS*	2 p.m.
01.19	QUINNIPIAC*	11:30 a.m.
01.22	at Iona*	2 p.m.
01.26	at Fairfield*	7 p.m.
01.28	SIENA*	2 p.m.
02.02	RIDER*	7 p.m.
02.04	at Quinnipiac*	1 p.m.
02.10	at Saint Peter's*	7 p.m.
02.12	IONA*	2 p.m.
02.16	MANHATTAN*	5 p.m.
02.18	at Marist*	7 p.m.
02.21	at Rider*	7 p.m.
02.24	at Manhattan*	7 p.m.
02.26	NIAGARA*	2 p.m.
03.02-06	MAAC Championships*	TBA

* - Metro Atlantic Athletic Conference (MAAC) game

^ - MAAC Championships (Albany, NY)

- Christmas City Classic at Lehigh (Bethlehem, PA)

All Dates & Times Subject to Change

2016-17 MONMOUTH WOMEN'S BASKETBALL

UNIVERSITY QUICK FACTS

Location.....	West Long Branch, NJ
Founded.....	1933
Enrollment (Undergrad + Grad).....	6,400
President.....	Dr. Paul R. Brown
Athletics Director.....	Dr. Marilyn McNeil
Conference.....	MAAC
Nickname.....	Hawks
Colors.....	Midnight Blue and White
Arena.....	OceanFirst Bank Center (4,100)
Website.....	www.MonmouthHawks.com
First season of Division I.....	1982-83
Overall Division I Record.....	521-475
First season in MAAC.....	2013-14
Conference Championship.....	1987

PALMATEER QUICK FACTS

Hometown: South Amboy, N.J.
 Family: Husband (Terry Palmateer)

EDUCATION

High School: Hoffman, 1989
 College: North Carolina State, 1993

PLAYING EXPERIENCE

1989-93 North Carolina State

COACHING RECORD

ASSISTANT COACH

Meredith College - 1994-96
 University of Virginia - 1996-99
 North Carolina State University - 1999-2009
 Seton Hall University - 2010-11

HEAD COACH

Monmouth University - 2011-present

2011-12:	19-13
2012-13:	15-15
2013-14:	8-25
2014-15:	13-18
2015-16:	14-17
TOTAL:	69-88

WHERE THE HAWKS RANK IN THE MAAC, NCAA

Player/Team	Category	MAAC	NCAA
Team	Assists (12.9)	7	204
Team	Blocked Shots (3.5)	5	151
Team	Defensive Rebounds (27.2)	1	N/A
Team	Offensive Rebounds (15.1)	1	N/A
Team	Rebounds (42.3)	1	64
Team	Scoring Offense (65.0)	3	187
Team	Steals (9.9)	3	65
Team	3-pt. FG Made (9.2)	1	14
Team	3-pt. FG % (.307)	8	196
Team	Turnover Margin (+0.30)	3	169
Tyese Purvis	Scoring (12.8)	10	N/A
	3-pt. FG made (2.7)	2	55
	Minutes (28.2)	25	N/A
Christina Mitchell	Blocks (1.4)	4	136
	Defensive Rebounds (3.5)	N/A	N/A
	Offensive Rebounds (2.1)	12	N/A
	Rebounds (5.8)	15	N/A
Kayla Shaw	Scoring (10.5)	20	N/A
	3 pt. FG % (.370)	14	132
	3-pt. FG made (2.7)	2	55
Rosa Graham	Scoring (7.9)	N/A	N/A
	Assists (2.9)	10	N/A
	Steals (1.6)	12	N/A
Helena Kurt	Assists (3.1)	N/A	N/A
	Steals (1.1)	N/A	N/A
	Assist/Turnover Ratio (1.2)	N/A	N/A
Taylor Nason	Rebounds (8.1)	1	117
	Steals (1.8)	8	N/A
	Offensive Rebounds (3.8)	1	N/A

OUTPERFORMING EXPECTATIONS

After being selected to finish ninth in last year's MAAC Preseason Coaches Poll, the Hawks went 11-9 in the conference en route to the semifinals. With a 66-59 loss to eventual runner-up Quinnipiac, Monmouth finished tied for fourth in the MAAC standings.

NEW YEAR, NEW LOOK

Monmouth welcomes eight new players for the 2016-17 campaign after losing seven from a season ago. The team features six freshman and two transfers, returning just six women from last year's roster. Senior guard Helena Kurt will return to the Monmouth rotation after missing all of last year with a knee injury.

PRESEASON POLLS

The Metro Atlantic Athletic Conference's (MAAC) Women's Basketball Head Coaches picked the Monmouth University women's basketball team to finish tied for seventh in the league this season. The Hawks, who were picked to finish ninth in last season's preseason coaches' poll, finished tied for fourth in the final standings and advanced to the MAAC Championship Semifinals.

KEY UP ESPN3

Monmouth University's Department of Athletics announced that 11 women's basketball games will be broadcast on ESPN3 this season. Home games with Clemson, Farleigh Dickinson, Providence, Marist, Fairfield, Saint Peter's, Canisius, Siena, Rider, Iona, and Niagara will all be broadcast on the platform. In addition, January 12th's matchup at Siena and February 16th home matchup with Manhattan will be broadcast on the MAAC's slate of ESPN3 games.

SIZING UP THE MAAC

The MAAC's coaches selected Quinnipiac to repeat as regular season champions with seven first-place votes and 117 points. Tournament Champion Iona was picked second, garnering the remaining four first-place votes and 114 points overall. Siena was picked third with 90 points edging Fairfield (82 points). Perennial MAAC power Marist was selected fifth with 72 points, while Canisius slotted in ahead of the Hawks for sixth with 58 points. The Hawks and Manhattan each collected 52 points to tie for seventh, ahead of Niagara (42), Rider (24) and Saint Peter's (21).



Senior forward Tyese Purvis

2016-17 MONMOUTH WOMEN'S BASKETBALL

RETURNERS

The 2016-17 Hawks return three starters from last season in guards **Tyese Purvis** and **McKinzee Barker** and forward **Christina Mitchell**. Purvis knocked down 67 three-point field goals a year ago, while Barker led the Hawks in assists and assist-to-turnover ratio. Mitchell led Monmouth with 8.9 rebounds per game and 55 blocked shots. Junior point guard **Helena Kurt** (Spanga, Sweden/Igelstavikens Gymnasium) also returns after missing all of last season due to injury. Kurt contributed 10.2 points and 4.6 assists per game in 2014-15. **Dana Carbone** is another Hawk whose size and ability to step out beyond the three-point arc presents problems for opponents. Carbone saw action in 30 games last season, averaging 4.8 points, 1.7 rebounds and 1.0 assists per game, while shooting 32.6 percent from long range. She scored in double figures four times, including a career-high 19 points on 5-of-10 shooting and 4-of-8 from long range at Fairleigh Dickinson. **Erica Balman** rounds out the returning frontcourt players for Monmouth. Balman, who saw action in 22 games including one start and averaging 1.7 points and 2.3 rebounds per game as a freshman, added muscle and polish to her post moves over the summer. Balman narrowly missed a double-double with eight points and 10 rebounds at Quinnipiac last year and finished the season with a flurry defensively, blocking a season-high three shots in the Hawks' MAAC Quarterfinal victory over Fairfield.

FRESHMAN PHENOMS

A 5-foot-7 guard from Brooklyn Park, MN, **Alaina Jarnot** was a 1,000-point scorer at Maranatha Christian Academy, she also holds the Minnesota single-season assists record and has led the state in assists in each of the past two years at 9.1 and 8.8 assists per game, respectively. Jarnot was eighth in the nation in assists last season. Another 5-7 guard, **Rosa Graham** was named First Team Private Parochial in her freshman and sophomore years, before an injury kept her out for two months last season. She led the Kings to a state championship as a sophomore, two sectional championships and was named to the sectionals all-tournament team as a sophomore. **Alexa Middleton** is a 6-foot-2 power forward/center from Abington Friends School in Jenkintown, PA. She's a three-time All-Friends League and InterLeague All-Star selection, as well as a City Classic All-Star in each of the last two years. Middleton was named MVP of the International Student Athletic Academy Tournament in 2013 and 2015, while earning the same honor at the Nazareth Academy Tournament in 2014. **Taylor Nason** is a 5-foot-10 forward from South County High School in Lorton, VA. She ranked third in the state of Virginia with 13.4 rebounds per game as a junior and compiled 19 double-doubles. She grabbed double-digit rebounds in 22 of her 25 games last year, including three with 20 or more. Nason led the Stallions to a second-place finish in the district as a junior. She was named Second Team All-Region and Third Team Northern Virginia Women's Basketball Coaches Association All-Northern Virginia last season, to go along with Patriot District First Team and All-District Tournament Team honors. **Kayla Shaw** is a 5-foot-10 guard from Chaparral High School in Scottsdale, AZ. She earned a three-star rating with an 88 grade on ESPN.com as the No. 90 player at her position. She developed a reputation as a sharpshooter, having shot 59.5 percent (184-309) from the floor and 52.4 percent (75-143) from long range, while averaging 21.1 points per game last season. Her three-point percentage ranked third in the nation last year. A 1,000-point scorer, Shaw earned All-State Honorable Mention, All-Division I Section II First and Second Team honors and the All-City Award twice. **Adriana Zelaya** is a 6-foot-2 stretch four who played for Coach Cory Rojeck at Millennium High School in Goodyear, AZ. Zelaya led Millennium to a State Division I Runner-Up finish as a junior and was named All-Section. Zelaya was named to the USJN All-Star Team and the PBR Super 64 All-Star Team in 2015.

TALENTED TRANSFERS

The Hawks added two transfers to the 2016-17 roster in **Rhaiah Spooner-Knight** and **Kayla Quintana**. Born in Raglan, New Zealand, Spooner-Knight was a three-year letter winner at Utah Valley University. She was named to the All-WAC Second Team as a sophomore in 2014-15 after being selected to the All-Newcomer Team as a freshman. Spooner-Knight scored in double figures in 53 of 72 games played over three seasons at UVU, including eight of 20 points or more. As a sophomore, she averaged 13.4 points, 5.3 rebounds and 1.8 assists per game, and upped her scoring to 13.8 ppg., while also averaging 4.7 rebounds in 12 games as a junior. Rhaiah scored a career-high 27 points against Southern Utah and added 23 points at Oregon in her junior season. "Q" earned Second Team All-Arizona Community College Athletic Conference and First Team All-Region in her sophomore season at Scottsdale Community College. She led the Fighting Artichokes to the Region I Division II playoffs, averaging 13.1 points and 3.9 rebounds as a sophomore and 7.0 points and 4.7 rebounds as a freshman.

STATS EXTRA

2015-16 MONMOUTH DOUBLE-FIGURE GAMES

POINTS	REBOUNDS
Tyese Purvis - 6	Christina Mitchell - 2
Kayla Shaw - 6	Taylor Nason - 2
Rosa Graham - 3	Alexa Middleton - 2
Christina Mitchell - 2	
Alaina Jarnot - 2	
Alexa Middleton - 2	
Helena Kurt - 1	
McKinzee Barker - 1	
Kayla Quintana - 1	
Taylor Nason - 1	
DOUBLE-DOUBLES	ASSISTS
Middleton - 1	

MONMOUTH'S RECORD WHEN... ALL MAAC

Leading or tied at halftime:	5-1	0-0
Trailing at halftime:	0-4	0-2
Shoot 50 percent or higher:	0-0	0-0
Shoot less than 50 percent:	5-5	0-2
Shoot higher percentage than opp.:	4-1	0-0
Shoot lower percentage than opp.:	1-4	0-2
Shoot same percentage as opp.:	0-0	0-0
Opp. shoot less than 50 percent:	5-4	0-1
Opp. shoot 50 percent or higher:	0-1	0-1
Score less than 60 points:	0-3	0-2
Score 60-69 points:	2-0	0-0
Score 70-79 points:	3-2	0-0
Score 80-89 points:	0-0	0-0
Score 90-plus points:	0-0	0-0
Opp. scores less than 50 points:	0-0	0-0
Opp. scores 50-59 points:	2-0	0-0
Opp. scores 60-69 points:	3-2	0-1
Opp. scores 70-79 points:	0-2	0-1
Opp. scores 80-89 points:	0-1	0-0
Opp. scores 90 points or more:	0-0	0-0
Outrebound opponent:	3-1	0-0
Outrebounded by opponent:	2-4	0-2
Rebounds are equal:	0-0	0-0
Commit fewer turnovers than opp.:	3-2	0-1
Commit same turnovers as opp.:	0-1	0-1
Commit more turnovers than opp.:	2-2	0-0
Games decided by 5 or fewer points:	0-1	0-0
Overtime games:	0-0	0-0
Games vs. ranked opponents:	0-0	0-0
Games following a loss:	2-3	0-1
Games following a win:	2-2	0-1
More bench points than opp.:	5-4	0-2
Equal/fewer bench points than opp.:	0-1	0-0
Attempt 15 or more 3-pointers:	5-5	0-2
Attempt 14 or fewer 3-pointers:	0-0	0-0

2016-17 MONMOUTH WOMEN'S BASKETBALL

MEDIA SERVICES

INTERVIEWS WITH COACH PALMATEER

Media wishing to interview Coach Palmateer must notify Chuck Marvel of the Monmouth Athletics Communications office and twenty-four hours of advance notice is appreciated. Coach Palmateer is available most weekday mornings for interviews or after practice.

PRACTICE COVERAGE

Monmouth's practices are open to the media. Shooting of video and still photos is limited to the first 20 minutes of each practice unless other arrangements are made through the Athletics Communications office.

MEDIA CREDENTIALS

Arrangements for media credentials for Monmouth home basketball games must be made through Chuck Marvel of the Monmouth Athletics Communications office. Requests by accredited media members should be made in writing and submitted on company letterhead to Chuck Marvel. Credentials must be requested at least 48 hours prior to requested game.

HOW TO REACH US:

ASSISTANT DIRECTOR OF
ATHLETIC COMMUNICATIONS:

CHUCK MARVEL

Phone: 732.263.5834

Fax: 732.263.5770

Email: cmarvel@monmouth.edu

Cell Phone: 302.388.3089

DRAWING INSPIRATION OFF THE COURT

Days before her 10th birthday, freshman forward Adriana Zelaya was diagnosed with pancreatic cancer. After surgeries that spanned nearly nine hours and an uncertainty of ever running again, Zelaya is now cancer-free. Monmouth's women's basketball team has teamed up with Project Purple to raise awareness for pancreatic cancer, and will wear purple t-shirts throughout the month of November, which stands as pancreatic cancer awareness month. The team will also wear gold shoelaces during the home opener against Clemson on November 19 to raise awareness for pediatric cancer.

HAWKS PLAY 4KAY

Since Head Coach Jenny Palmateer took over the reins of the Monmouth women's basketball team, Play 4Kay Day has traditionally taken on greater meaning. Palmateer both played and coached a combined 14 years under Kay Yow, the longtime North Carolina State Head Coach for whom the cause is named. Play 4Kay is a 501 (c)(3) charitable organization committed to being a part of finding an answer in the fight against women's cancers through raising money for scientific research, assisting the underserved and unifying people for a common cause.

CHRISTMAS CITY CLASSIC

Monmouth traveled to Bethlehem, PA on November 26 and 27 for the Christmas City Classic. The Hawks fell to Hartford 75-72, and defeated Lehigh a day later, 73-62. Last year, Monmouth hosted the Hawk Holiday Classic on December 29 and 30. The Hawks bested St. Francis Brooklyn 63-54 before falling to LaSalle 65-50.

HAWKS ON THE MOVE

Eight out of Monmouth's first ten games will be on the road, with the lone home games coming on November 19 against ACC foe Clemson and December 10 versus Farleigh Dickinson. After a December 12 matchup at Eastern Michigan, the Hawks will return to the OceanFirst Bank Center for four straight home games.

PICKING UP WHERE SHE LEFT OFF

Before Helena Kurt suffered a season-ending knee injury last year, the Spanga, Sweden native averaged 10.2 points and 4.6 assists in 2015-16. In her first game back, Kurt matched those numbers almost identically, scoring 11 points and adding 5 assists in Monmouth's win over Robert Morris. In her second game back at St. Francis Brooklyn, Kurt stuffed the stat sheet with nine points, six assists, and a career-high six steals.

GOLDEN GRAHAM

Freshman Rosa Graham wasted no time making her mark, as her 14 points are the most by any Monmouth freshman in their debut since at least 2004-2005. The Rochester, NY native buried all six of her free throw attempts in Monmouth's 69-56 win at Robert Morris. She followed that up by scoring 19 points at St. Francis Brooklyn on November 16, adding six assists and five steals on the night. On December 12, Graham notched 13 points and six assists in Monmouth's 75-68 win at Eastern Michigan.

DEPTH DISPLAY

In the first quarter of Monmouth's season-opener at Robert Morris, eleven Hawks saw the floor. By the end of the game, nine players played at least 14 minutes, with senior Tyese Purvis leading the way at 29 minutes. Freshman Alaina Jarrot saw the second most minutes, playing 27 in her collegiate debut. Three days later at St. Francis Brooklyn, 12 Hawks earned playing time.

RAREFIED AIR

Christina Mitchell's 21 rebounds last year as part of her second double-double of the year (13 points) against Siena on Dec. 4 were the most by a Monmouth player since the 1987-88 season, when Sandra Cook grabbed 21 or 22 rebounds on four occasions. The all-time Monmouth single-game record of 23 rebounds is held by Linda Wilson, who did it three times in the 1983-84 and 1984-85 seasons. Mitchell's previous career high was 17 boards. The double-double was the eighth of Mitchell's career and her seventh in a span of 32 games played. Mitchell grabbed 22 rebounds in two games against Hartford (12) and Lehigh (10) this season.



Senior center Christina Mitchell

2016-17 MONMOUTH WOMEN'S BASKETBALL

JARNOT NOT SKIPPING A BEAT

As the state of Minnesota's all-time leader in assists while also scoring over 2,000 points in her high school career, freshman Alaina Jarnot knows how to fill a stat sheet. In the first two games of her Monmouth career, Jarnot totaled 19 points, six assists, six rebounds, and three steals. The Brooklyn Park, MN native has averaged 22.0 minutes per game.

MIDDLETON IN THE...MIDDLE

Freshman Alexa Middleton has made a mark in the early part of the season, grabbing six rebounds in each of her first two games. As a high school standout from Philadelphia, PA, Middleton averaged a double-double for her career and more than 12 points and 12 rebounds in her senior season. She added three blocks in Monmouth's 87-78 loss to St. Francis Brooklyn on November 16. Middleton scored in double-figures for the first time in just the fourth game of her career, dropping 14 points while grabbing 5 rebounds against Hartford on November 26.

THREE'S COMPANY

After its fifth game versus Lehigh on November 27, Monmouth ranked 6th in the nation in three-point field goals per game (10.6). Tyese Purvis racked up 13 threes while freshman Kayla Shaw has buried 14 threes, including nine within a two game span against Hartford and Lehigh. Fellow freshmen Rosa Graham and Alaina Jarnot contributed seven 3-pointers each. Through five games, Monmouth is on pace to make 307 three-point field goals, which would be the most in program history. The previous mark was set last year, when the 2015-16 squad made 238.

NASON DOMINATION

Freshman Taylor Nason has been dominant on the glass, leading the Hawks in rebounds per game. The Lorton, VA native pulled down eight rebounds in the season opener at Robert Morris, five in the Hawks' loss at St. Francis Brooklyn, and another eight in Monmouth's home opener versus Clemson. Nason totaled a season-high 11 points and nine rebounds in the loss at Canisius on December 4, and grabbed 10 rebounds in the Hawks' win at Sacred Heart on December 8. After the win at Sacred Heart, she led the MAAC in offensive rebounds per game at 3.8. Following a 13-rebound performance in Monmouth's win at Eastern Michigan, Nason led the MAAC in rebounds per game (8.1).

LEADING THE MAAC

Monmouth led the Metro Atlantic Conference in offensive rebounds, defensive rebounds, total rebounds, and 3-pt field goals made per game (10.6) after the fifth game of the season at Lehigh. Senior Christina Mitchell led the team in all rebounding categories, pulling down 7.4 per game. Freshman Kayla Shaw led the team with 2.8 threes made per game, with senior Tyese Purvis making 2.6 per game.

QUINTESSENTIAL QUINTANA

After scoring just 1.5 points per game through the first four games of the season, Kayla Quintana burst onto the scene in Monmouth's 73-62 win over Lehigh on November 27. The junior transfer scored a season-high 16 points (6-7 FG) off the bench while adding four steals, three rebounds, two assists, and two blocks.

SHARPSHOOTING SHAW

Freshman guard Kayla Shaw has been exceptional from three-point range in the early part of the season. Through the first five games of Monmouth's season, Shaw hit 17 threes in total. The Scottsdale, AZ native scored 17 points in just 21 minutes of action at Lehigh, nailing five three-pointers off the bench. Shaw previously scored 12 points against Hartford on November 26 with four 3-pointers, and scored 14 points at St. Francis Brooklyn on three 3-pointers. The freshman has 27 total threes on the season and has scored in double-figures six times.

100 CLUB

Senior center Christina Mitchell played her 100th career game in a Monmouth uniform on December 4 at Canisius. The Baltimore, MD native ranks top-10 in program history for rebounds and has the fifth most blocks in Monmouth history.

PURVIS' CAREER NIGHT X2

Senior guard Tyese Purvis turned in a career night on December 8 at Sacred Heart, scoring a career-high 22 points behind 5-7 3FG. Purvis also matched a career-high with three steals in the contest. In her first game of the season off the bench, the Queens, NY native also added four rebounds and three assists in Monmouth's 65-54 win over the Pioneers. Four days later at Eastern Michigan, Purvis set a new career high with 26 points. The senior scored 18 points in the fourth quarter to propel Monmouth to their third straight win, 75-68. In the two games she did not start this year, Purvis set new career-high point totals in both.

ANY GIVEN NIGHT

Out of the 12 Hawks that have seen the floor this season, 10 have scored in double-figures at least once. Senior Tyese Purvis leads the way with five games in double-figures, with freshman Kayla Shaw has four. All five freshman that have played have gone into double-figures at least once, including Shaw's 17 at Lehigh, Rosa Graham's 19 and Alaina Jarnot's 10 at St. Francis Brooklyn, Alexa Middleton's 14 at Hartford, and Taylor Nason's 11 at Canisius.

MIDDLETON SEEING DOUBLE

Freshman forward Alexa Middleton turned in a double-double just 10 games into her career in Monmouth's 75-68 win at Eastern Michigan on December 12. The Philadelphia, PA native scored a clutch 10th point, giving the Hawks a 71-65 lead with 36 seconds remaining. Middleton secured 15 rebounds in the win, including four on the offensive glass.

2016-17 MONMOUTH WOMEN'S BASKETBALL

SEASON SUPERLATIVES

Points	26		Purvis, Tyese at Eastern Michigan (12/12/16)
	22		Purvis, Tyese at Sacred Heart (12/08/16)
	19		Graham, Rosa at St. Francis Brooklyn (11/16/16)
	17		Shaw, Kayla at Lehigh (11/27/16)
	17		Purvis, Tyese vs Clemson (11/19/16)
Field Goals Made	8		Purvis, Tyese at Eastern Michigan (12/12/16)
	7		Graham, Rosa at St. Francis Brooklyn (11/16/16)
Field Goal Att.	20		Purvis, Tyese at Eastern Michigan (12/12/16)
	17		Purvis, Tyese at St. Francis Brooklyn (11/16/16)
FG Pct (min 5 made)	1.000	(6-6)	Middleton, Alexa vs Hartford (11/26/16)
	.857	(6-7)	Quintana, Kayla at Lehigh (11/27/16)
3-Point FG Made	5		Purvis, Tyese at Eastern Michigan (12/12/16)
	5		Shaw, Kayla at Sacred Heart (12/08/16)
	5		Purvis, Tyese at Sacred Heart (12/08/16)
	5		Shaw, Kayla at Lehigh (11/27/16)
	5		Purvis, Tyese vs Clemson (11/19/16)
3-Point FG Att.	14		Purvis, Tyese at Eastern Michigan (12/12/16)
	12		Purvis, Tyese vs Clemson (11/19/16)
3-Pt FG Pct (min 2 made)	.750	(3-4)	Quintana, Kayla at Lehigh (11/27/16)
	.714	(5-7)	Purvis, Tyese at Sacred Heart (12/08/16)
Free Throws Made	6		Graham, Rosa at Robert Morris (11/13/16)
	6		Kurt, Helena at Robert Morris (11/13/16)
Free Throw Att.	8		Graham, Rosa at St. Francis Brooklyn (11/16/16)
	8		Kurt, Helena at Robert Morris (11/13/16)
FT Pct (min 3 made)	1.000	(6-6)	Graham, Rosa at Robert Morris (11/13/16)
	.833	(5-6)	Mitchell, Christina vs FDU (12/10/16)
	.833	(5-6)	Purvis, Tyese at Sacred Heart (12/08/16)
Rebounds	15		Middleton, Alexa at Eastern Michigan (12/12/16)
	13		Nason, Taylor at Eastern Michigan (12/12/16)
Assists	6		Graham, Rosa at Eastern Michigan (12/12/16)
	6		Graham, Rosa at St. Francis Brooklyn (11/16/16)
	6		Kurt, Helena at St. Francis Brooklyn (11/16/16)
Steals	6		Kurt, Helena at St. Francis Brooklyn (11/16/16)
	5		Mitchell, Christina vs FDU (12/10/16)
	5		Graham, Rosa at St. Francis Brooklyn (11/16/16)
Blocked Shots	3		Mitchell, Christina at Canisius (12/04/16)
	3		Purvis, Tyese vs Clemson (11/19/16)
	3		Middleton, Alexa at St. Francis Brooklyn (11/16/16)
Turnovers	7		Graham, Rosa vs Hartford (11/26/16)
	6		Jarnot, Alaina at Eastern Michigan (12/12/16)
	6		Jarnot, Alaina vs Hartford (11/26/16)
Fouls	5		Kurt, Helena vs Hartford (11/26/16)
	5		Graham, Rosa vs Hartford (11/26/16)
	5		Purvis, Tyese at St. Francis Brooklyn (11/16/16)
Minutes	37		Purvis, Tyese at Lehigh (11/27/16)
	37		Purvis, Tyese vs Clemson (11/19/16)
	34		Nason, Taylor at Eastern Michigan (12/12/16)
	32		Purvis, Tyese at Eastern Michigan (12/12/16)
	32		Jarnot, Alaina vs FDU (12/10/16)

2016-17 MONMOUTH WOMEN'S BASKETBALL

Monmouth University Roster

Numerical

No.	NAME	CL.	Pos.	Ht.	HOMETOWN/HIGH SCHOOL/LAST SCHOOL
2	Kayla Quintana	Jr.	G	5-8	Mesa, AZ/Mesa/Scottsdale CC
3	Rosa Graham	Fr.	G	5-7	Rochester, NY/Bishop Kearney
4	Helena Kurt	Sr.	G	5-5	Spanga, Sweden/Igelstavikens Gymnasium
10	Dana Carbone	Jr.	F	5-11	Toms River, NJ/Monsignor Donovan
11	Kayla Shaw	Fr.	G	5-10	Scottsdale, AZ/Chaparral
12	Alaina Jarnot	Fr.	G	5-7	Brooklyn Park, MN/Maranatha Christian Academy
13	Tyese Purvis	Sr.	G	5-9	Queens, NY/Francis Lewis/Monroe C.C.
14	Christina Mitchell	Sr.	F	6-4	Baltimore, MD/MATHS
20	McKinzee Barker	So.	G	5-10	Bomont, WV/Clay County
21	Rhaiah Spooner-Knight	Sr.	G	5-10	Hamilton, New Zealand/Sacred Heart/Utah Valley
22	Alexa Middleton	Fr.	F	6-2	Philadelphia, PA/Abington Friends
23	Adriana Zelaya	Fr.	F	6-2	Goodyear, AZ/Millennium
24	Erica Balman	So.	C	6-5	Marcellus, NY/Marcellus
32	Taylor Nason	Fr.	F	5-10	Lorton, VA/South County

Alphabetical

No.	NAME	CL.	Pos.	Ht.	HOMETOWN (HIGH SCHOOL/LAST SCHOOL)
24	Erica Balman	So.	C	6-5	Marcellus, NY/Marcellus
20	McKinzee Barker	So.	G	5-10	Bomont, WV/Clay County
10	Dana Carbone	Jr.	F	5-11	Toms River, NJ/Monsignor Donovan
3	Rosa Graham	Fr.	G	5-7	Rochester, NY/Bishop Kearney
12	Alaina Jarnot	Fr.	G	5-7	Brooklyn Park, MN/Maranatha Christian Academy
4	Helena Kurt	Sr.	G	5-5	Spanga, Sweden/Igelstavikens Gymnasium
22	Alexa Middleton	Fr.	F	6-2	Philadelphia, PA/Abington Friends
14	Christina Mitchell	Sr.	F	6-4	Baltimore, MD/MATHS 1
32	Taylor Nason	Fr.	F	5-10	Lorton, VA/South County
13	Tyese Purvis	Sr.	G	5-9	Queens, NY/Francis Lewis/Monroe C.C.
2	Kayla Quintana	Jr.	G	5-8	Mesa, AZ/Mesa/Scottsdale CC
11	Kayla Shaw	Fr.	G	5-10	Scottsdale, AZ/Chaparral
21	Rhaiah Spooner-Knight	Sr.	G	5-10	Hamilton, New Zealand/Sacred Heart/Utah Valley
23	Adriana Zelaya	Fr.	F	6-2	Goodyear, AZ/Millennium

Coaching Staff

HEAD COACH: Jenny Palmateer (North Carolina State, 1993), 6th season at Monmouth

ASSISTANT COACH: Mark Youngs (Hope College, 1999), 3rd season at Monmouth

ASSISTANT COACH: Latara King (Florida Memorial, 2010), 2nd season at Monmouth

ASSISTANT COACH: Jamie Nash (Nebraska Omaha, 2013), 2nd season at Monmouth

DIRECTOR OF OPERATIONS: Chelsea Wolf (Ramapo, 2009), 1st season at Monmouth

Pronunciation Guide

Kayla Quintana – KIN-tana

Helena Kurt – hel-AY-nuh

Alaina Jarnot – JAR-nit

Rhaiah Spooner-Knight – RAY-uh

Adriana Zelaya – Zuh-LIE-uh

2016-17 MONMOUTH WOMEN'S BASKETBALL

MONMOUTH'S Starting Line-Ups

Date	Opponent	Guard	Guard	Forward	Forward	Center	Result
11/13/16	at Robert Morris	Kurt	Jarnot	Purvis	Barker	Mitchell	W, 69-56
11/16/16	at St. Francis Brooklyn	Kurt	Jarnot	Purvis	Barker	Mitchell	L, 87-78
11/19/16	vs Clemson	Kurt	Jarnot	Purvis	Nason	Mitchell	L, 60-47
11/26/16	Hartford	Kurt	Jarnot	Purvis	Barker	Mitchell	L, 75-72
11/27/16	at Lehigh	Kurt	Jarnot	Purvis	Barker	Mitchell	W, 73-62
12/02/16	at Niagara	Kurt	Jarnot	Purvis	Barker	Mitchell	L, 66-45
12/04/16	at Canisius	Kurt	Purvis	Barker	Nason	Mitchell	L, 74-54
12/08/16	at Sacred Heart	Graham	Quintana	Shaw	Nason	Mitchell	W, 65-54
12/10/16	vs Fairleigh Dickinson	Graham	Jarnot	Purvis	Nason	Mitchell	W, 72-63
12/12/16	at Eastern Michigan	Jarnot	Shaw	Barker	Nason	Mitchell	W, 75-68

MONMOUTH'S Individual Game Leaders

Date	Opponent	Result	Points	Rebounds	Assists	Steals	Blocks
11/13/16	at Robert Morris	W, 69-56	Purvis (15)	Nason (8)	Kurt/Jarnot (5)	Jarnot (3)	Mitchell (2)
11/16/16	at St. Francis Brooklyn	L, 87-78	Graham (19)	Middleton/Mitchell (6)	Kurt/Graham (6)	Kurt (6)	Middleton (3)
11/19/16	vs Clemson	L, 60-47	Purvis (17)	Nason (8)	Kurt/Jarnot (3)	Nason (3)	Purvis (3)
11/26/16	Hartford	L, 75-72	Middleton (14)	Mitchell (12)	Jarnot (5)	Mitchell (2)	Mitchell (1)
11/27/16	at Lehigh	W, 73-62	Shaw (17)	Mitchell (10)	Graham (5)	Quintana (4)	Quintana (2)
12/02/16	at Niagara	L, 66-45	Mitchell (10)	Nason/Kurt (7)	Kurt/Quintana (3)	Jarnot (3)	Mitchell (2)
12/04/16	at Canisius	L, 74-54	Nason (11)	Nason (9)	Graham (3)	Graham (3)	Mitchell (3)
12/08/16	at Sacred Heart	W, 65-54	Purvis (22)	Nason (10)	Jarnot/Purvis (3)	Shaw/Purvis (3)	Mitchell/Nason (1)
12/10/16	vs Fairleigh Dickinson	W, 72-63	Shaw (13)	Middleton (11)	Nason (5)	Graham (4)	Mitchell/Middleton (2)
12/12/16	at Eastern Michigan	W, 75-68	Purvis (26)	Middleton (15)	Graham (6)	Six Players (1)	Three Players (1)

2016-17 MONMOUTH WOMEN'S BASKETBALL

PLAYER CAPSULES



2 • Kayla Quintana

Junior • Guard • 5-8
Mesa, AZ (Scottsdale CC/Mesa)

	2016-17	Career (at MU)
Games Played	10	10
Games Started	1	1
Double-Doubles	0	0
Double Digit Scoring Games	1	1

Quintana's Season and Career Highs (at Monmouth)

Points	16 at Lehigh (11/27/16)
Rebounds	4, twice, last vs Hartford (11/26/16)
Assists	2 at Lehigh (11/27/16)
Blocks	2 at Lehigh (11/27/16)
Steals	4 at Lehigh (11/27/16)
Minutes	21 at Lehigh (11/27/16)

#02 Quintana, Kayla

Opponent	Date	gs	min	Total		3-Pointers		Free throws			Rebounds				pts	avg				
				fg-fga	pct	3fg-fga	pct	ft-fa	pct	off	def	tot	avg	pf			a	t/b	blk	stl
at Robert Morris	11/13/16	8		1-3	.333	1-2	.500	0-0	.000	0	1	1	1.0	3	0	3	1	0	3	3.0
at St. Francis Brooklyn	11/16/16	15		1-4	.250	0-2	.000	0-0	.000	1	3	4	2.5	2	0	1	1	0	2	2.5
CLEMSON	11/19/16	1		0-0	.000	0-0	.000	0-0	.000	0	0	0	1.7	0	0	3	0	0	0	1.7
vs Hartford	11/26/16	9		0-3	.000	0-2	.000	1-2	.500	1	3	4	2.3	2	0	0	0	0	1	1.5
at Lehigh	11/27/16	21		6-7	.857	3-4	.750	1-3	.333	1	2	3	2.4	4	2	2	2	4	16	4.4
at Niagara	12/02/16	18		1-5	.200	0-2	.000	0-0	.000	1	2	3	2.5	0	3	0	0	0	2	4.0
at Canisius	12/04/16	11		1-4	.250	0-1	.000	0-0	.000	1	1	2	2.4	0	1	1	0	0	2	3.7
at Sacred Heart	12/08/16	* 13		0-1	.000	0-0	.000	1-2	.500	2	0	2	2.4	4	1	4	0	2	1	3.4
FDU	12/10/16	6		1-1	1.000	0-0	.000	1-1	1.000	1	1	2	2.3	2	1	1	0	0	3	3.3
at Eastern Michigan	12/12/16	10		0-2	.000	0-1	.000	0-0	.000	3	0	3	2.4	3	0	1	0	1	0	3.0
Totals		1	112	11-30	.367	4-14	.286	4-8	.500	11	13	24	2.4	20	8	16	4	7	30	3.0

Games played: 10
Minutes/game: 11.2
Points/game: 3.0
FG Pct: 36.7
3FG Pct: 28.6
FT Pct: 50.0

Rebounds/game: 2.4
Assists/game: 0.8
Turnovers/game: 1.6
Assist/turnover ratio: 0.5
Steals/game: 0.7
Blocks/game: 0.4



3 • Rosa Graham

Freshman • Guard • 5-7
Rochester, NY (Bishop Kearney)

	2016-17	Career
Games Played	10	10
Games Started	2	2
Double-Doubles	0	0
Double Digit Scoring Games	3	3

Graham's Season and Career Highs

Points	19 at St. Francis Brooklyn (11/16/16)
Rebounds	6 at Canisius (12/04/16)
Assists	6, twice, last at Eastern Michigan (12/12/16)
Blocks	
Steals	5 at St. Francis Brooklyn (11/16/16)
Minutes	28, twice, last at Eastern Michigan (12/12/16)

#03 Graham, Rosa

Opponent	Date	gs	min	Total		3-Pointers		Free throws			Rebounds				pts	avg				
				fg-fga	pct	3fg-fga	pct	ft-fa	pct	off	def	tot	avg	pf			a	t/b	blk	stl
at Robert Morris	11/13/16	15		3-7	.429	2-3	.667	6-6	1.000	0	0	0	0.0	3	0	1	0	1	14	14.0
at St. Francis Brooklyn	11/16/16	24		7-13	.538	3-7	.429	2-8	.250	0	1	1	0.5	2	6	0	0	5	19	16.5
CLEMSON	11/19/16	21		1-7	.143	0-2	.000	2-5	.400	1	2	3	1.3	2	3	2	0	1	4	12.3
vs Hartford	11/26/16	21		2-4	.500	2-3	.667	0-0	.000	1	4	5	2.3	5	3	7	0	1	6	10.8
at Lehigh	11/27/16	19		3-8	.375	0-5	.000	2-3	.667	0	3	3	2.4	2	5	3	0	0	8	10.2
at Niagara	12/02/16	15		0-2	.000	0-1	.000	1-2	.500	0	1	1	2.2	0	0	3	0	0	1	8.7
at Canisius	12/04/16	28		3-9	.333	1-4	.250	2-2	1.000	1	5	6	2.7	2	3	3	0	3	9	8.7
at Sacred Heart	12/08/16	* 24		2-4	.500	0-1	.000	0-0	.000	0	0	0	2.4	0	2	1	0	0	4	8.1
FDU	12/10/16	* 24		0-4	.000	0-1	.000	1-2	.500	1	3	4	2.6	3	1	3	0	4	1	7.3
at Eastern Michigan	12/12/16	28		5-9	.556	2-4	.500	1-6	.167	0	3	3	2.6	2	6	4	0	1	13	7.9
Totals		2	219	26-67	.388	10-31	.323	17-34	.500	4	22	26	2.6	21	29	27	0	16	79	7.9

Games played: 10
Minutes/game: 21.9
Points/game: 7.9
FG Pct: 38.8
3FG Pct: 32.3
FT Pct: 50.0

Rebounds/game: 2.6
Assists/game: 2.9
Turnovers/game: 2.7
Assist/turnover ratio: 1.1
Steals/game: 1.6

2016-17 MONMOUTH WOMEN'S BASKETBALL

PLAYER CAPSULES



4 • Helena Kurt

Senior • Guard • 5-5
Spanga, Sweden (Igelstavikens Gymnasium)

	2016-17	Career
Games Played	7	69
Games Started	7	59
Double-Doubles	0	0
Double Digit Scoring Games	1	22

2016-17 Season Highs

Points	11 at Robert Morris (11/13/16)
Rebounds	7 at Niagara (12/02/16)
Assists	6 at St. Francis Brooklyn (11/16/16)
Blocks	
Steals	6 at St. Francis Brooklyn (11/16/16)
Minutes	27 at St. Francis Brooklyn (11/16/16)

Kurt's Career Highs

Points	23 vs. Manhattan (02/26/15)
Rebounds	7, twice, last at Niagara (12/02/16)
Assists	9, three times, last vs. Manhattan (02/26/15)
Blocks	1, two times, last vs. Fairfield (01/25/15)
Steals	6 at St. Francis Brooklyn (11/16/16)
Minutes	44 at Niagara (02/20/15)

#04 Kurt, Helena

Opponent	Date	gs	min	Total		3-Pointers		Free throws		Rebounds				pf	a	t/o	blk	stl	pts	avg
				fg-fga	pct	3fg-fga	pct	ft-fa	pct	off	def	tot	avg							
at Robert Morris	11/13/16	*	26	2-7	.286	1-3	.333	6-8	.750	0	2	2	2.0	3	5	2	0	1	11	11.0
at St. Francis Brooklyn	11/16/16	*	27	4-12	.333	1-5	.200	0-1	.000	0	2	2	2.0	4	6	2	0	6	9	10.0
CLEMSON	11/19/16	*	20	2-5	.400	2-3	.667	0-0	.000	1	1	2	2.0	3	1	4	0	0	6	8.7
vs Hartford	11/26/16	*	21	1-5	.200	1-3	.333	0-0	.000	0	1	1	1.8	5	2	3	0	1	3	7.3
at Lehigh	11/27/16	*	23	2-8	.250	0-3	.000	0-0	.000	1	3	4	2.2	2	4	5	0	0	4	6.6
at Niagara	12/02/16	*	23	1-5	.200	0-1	.000	0-0	.000	1	6	7	3.0	2	3	3	0	0	2	5.8
at Canisius	12/04/16	*	15	2-8	.250	0-2	.000	0-0	.000	1	1	2	2.9	1	1	0	0	0	4	5.6
at Sacred Heart	12/08/16	dnp	-	-	-	-	-	-	-	-	-	-	-	-	-	-	-	-	-	-
FDU	12/10/16	dnp	-	-	-	-	-	-	-	-	-	-	-	-	-	-	-	-	-	-
at Eastern Michigan	12/12/16	dnp	-	-	-	-	-	-	-	-	-	-	-	-	-	-	-	-	-	-
Totals			7	14-50	.280	5-20	.250	6-9	.667	4	16	20	2.9	20	22	19	0	8	39	5.6

Games played: 7
Minutes/game: 22.1
Points/game: 5.6
FG Pct: 28.0
3FG Pct: 25.0
FT Pct: 66.7

Rebounds/game: 2.9
Assists/game: 3.1
Turnovers/game: 2.7
Assist/turnover ratio: 1.2
Steals/game: 1.1



10 • Dana Carbone

Junior • Forward • 5-11
Toms River, NJ (Monsignor Donovan)

	2016-17	Career
Games Played	8	55
Games Started	0	0
Double-Doubles	0	0
Double Digit Scoring Games	0	4

2016-17 Season Highs

Points	6 at St. Francis Brooklyn (11/16/16)
Rebounds	2, twice last vs FDU (12/10/16)
Assists	1 at Lehigh (11/27/16)
Blocks	
Steals	1 at Lehigh (11/27/16)
Minutes	10 at Sacred Heart (12/08/16)

Carbone's Career Highs

Points	19 at Fairleigh Dickinson (12/20/15)
Rebounds	5 vs. Rider (02/25/16)
Assists	3, four times, last vs. Fairfield (01/30/16)
Blocks	2 at Iona (02/05/16)
Steals	3, three times, last vs. Saint Peter's (02/28/16)
Minutes	21 at Quinnipiac (01/28/16)

#10 Carbone, Dana

Opponent	Date	gs	min	Total		3-Pointers		Free throws		Rebounds				pf	a	t/o	blk	stl	pts	avg
				fg-fga	pct	3fg-fga	pct	ft-fa	pct	off	def	tot	avg							
at Robert Morris	11/13/16	dnp	-	-	-	-	-	-	-	-	-	-	-	-	-	-	-	-	-	-
at St. Francis Brooklyn	11/16/16	5	2-4	.500	2-4	.500	0-0	.000	0	1	1	1.0	0	0	0	0	0	0	6	6.0
CLEMSON	11/19/16	dnp	-	-	-	-	-	-	-	-	-	-	-	-	-	-	-	-	-	-
vs Hartford	11/26/16	2	0-2	.000	0-2	.000	0-0	.000	0	0	0	0.5	0	0	0	0	0	0	0	3.0
at Lehigh	11/27/16	4	0-3	.000	0-2	.000	0-0	.000	0	0	0	0.3	1	1	0	0	1	0	2.0	
at Niagara	12/02/16	6	1-3	.333	0-2	.000	0-0	.000	1	1	2	0.8	0	0	2	0	0	2	2.0	
at Canisius	12/04/16	4	0-1	.000	0-1	.000	0-0	.000	0	0	0	0.6	0	0	1	0	0	0	1.6	
at Sacred Heart	12/08/16	10	0-1	.000	0-1	.000	0-0	.000	1	1	0.7	1	0	0	0	0	0	0	1.3	
FDU	12/10/16	2	1-1	1.000	1-1	1.000	2-2	1.000	0	2	2	0.9	0	0	0	0	0	5	1.9	
at Eastern Michigan	12/12/16	2	1-2	.500	1-2	.500	0-0	.000	0	0	0	0.8	0	0	0	0	0	3	2.0	
Totals			0	35	5-17	.294	4-15	.267	2-2	1.000	1	5	6	0.8	2	1	3	0	16	2.0

Games played: 8
Minutes/game: 4.4
Points/game: 2.0
FG Pct: 29.4
3FG Pct: 26.7
FT Pct: 100.0

Rebounds/game: 0.8
Assists/game: 0.1
Turnovers/game: 0.4
Assist/turnover ratio: 0.3
Steals/game: 0.1

2016-17 MONMOUTH WOMEN'S BASKETBALL

PLAYER CAPSULES



11 • Kayla Shaw

Freshman • Guard • 5-10
Scottsdale, AZ (Chaparral)

	2016-17	Career
Games Played	10	10
Games Started	2	2
Double-Doubles	0	0
Double Digit Scoring Games	6	6

Shaw's Season and Career Highs

Points	17 at Lehigh (11/27/16)
Rebounds	4 at Niagara (12/02/16)
Assists	2 vs Hartford (11/26/16)
Blocks	
Steals	3, twice, last vs FDU (12/10/16)
Minutes	30 at Sacred Heart (12/08/16)

#11 Shaw, Kayla

Opponent	Date	gs	min	Total		3-Pointers		Free throws		Rebounds				pts	avg					
				fg-fga	pct	3fg-fga	pct	ft-fa	pct	off	def	tot	avg			pf	a	tlo	blk	stl
at Robert Morris	11/13/16		14	1-4	.250	1-4	.250	0-0	.000	0	0	0	0.0	0	1	0	0	3	3.0	
at St. Francis Brooklyn	11/16/16		16	5-10	.500	3-7	.429	1-2	.500	2	0	2	1.0	0	0	2	0	14	8.5	
CLEMSON	11/19/16		13	1-4	.250	1-4	.250	0-0	.000	1	0	1	1.0	0	1	1	0	3	6.7	
vs Hartford	11/26/16		18	4-10	.400	4-9	.444	0-0	.000	0	2	2	1.3	3	2	0	0	12	8.0	
at Lehigh	11/27/16		21	6-10	.600	5-8	.625	0-0	.000	0	2	2	1.4	0	0	0	0	17	9.8	
at Niagara	12/02/16		23	3-13	.231	3-10	.300	0-0	.000	3	1	4	1.8	1	0	2	0	9	9.7	
at Canisius	12/04/16		17	3-10	.300	1-6	.167	0-0	.000	0	2	2	1.9	1	0	2	0	7	9.3	
at Sacred Heart	12/08/16	*	30	5-14	.357	5-11	.455	0-0	.000	0	3	3	2.0	1	0	2	0	3	15.0	
FDU	12/10/16		25	5-11	.455	0-5	.000	3-4	.750	1	1	2	2.0	1	1	4	0	3	13	10.3
at Eastern Michigan	12/12/16	*	27	4-12	.333	4-9	.444	0-0	.000	0	0	0	1.8	1	0	2	0	12	10.5	
Totals		2	204	37-98	.378	27-73	.370	4-6	.667	7	11	18	1.8	8	4	16	0	8	105	10.5

Games played: 10
Minutes/game: 20.4
Points/game: 10.5
FG Pct: 37.8
3FG Pct: 37.0
FT Pct: 66.7

Rebounds/game: 1.8
Assists/game: 0.4
Turnovers/game: 1.6
Assist/turnover ratio: 0.3
Steals/game: 0.8



12 • Alaina Jarnot

Freshman • Guard • 5-7
Brooklyn Park, MN (Maranatha Christian Academy)

	2016-17	Career
Games Played	10	10
Games Started	8	8
Double-Doubles	0	0
Double Digit Scoring Games	2	2

Jarnot's Season and Career Highs

Points	12 vs FDU (12/10/16)
Rebounds	4, three times, last vs FDU (12/10/16)
Assists	5, twice, last vs Hartford (11/26/16)
Blocks	
Steals	3, twice, last at Niagara (12/02/16)
Minutes	32 vs FDU (12/10/16)

#12 Jarnot, Alaina

Opponent	Date	gs	min	Total		3-Pointers		Free throws		Rebounds				pts	avg					
				fg-fga	pct	3fg-fga	pct	ft-fa	pct	off	def	tot	avg			pf	a	tlo	blk	stl
at Robert Morris	11/13/16	*	27	3-10	.300	2-3	.667	1-2	.500	1	3	4	4.0	0	5	4	0	3	9	9.0
at St. Francis Brooklyn	11/16/16	*	20	4-9	.444	2-5	.400	0-0	.000	1	1	2	3.0	0	1	0	0	10	9.5	
CLEMSON	11/19/16	*	27	3-11	.273	1-7	.143	1-2	.500	0	1	1	2.3	2	3	5	0	1	8	9.0
vs Hartford	11/26/16	*	29	3-10	.300	2-7	.286	0-0	.000	0	2	2	2.3	3	5	6	0	0	8	8.8
at Lehigh	11/27/16	*	18	1-8	.125	0-4	.000	0-0	.000	2	0	2	2.2	0	2	5	0	0	2	7.4
at Niagara	12/02/16	*	21	0-4	.000	0-3	.000	2-2	1.000	0	2	2	2.2	2	0	3	0	3	2	6.5
at Canisius	12/04/16		18	1-3	.333	1-2	.500	0-0	.000	0	1	1	2.0	0	2	1	0	0	3	6.0
at Sacred Heart	12/08/16		16	1-7	.143	1-2	.500	0-2	.000	1	3	4	2.3	1	3	2	0	0	3	5.6
FDU	12/10/16	*	32	4-12	.333	2-5	.400	2-2	1.000	2	2	4	2.4	2	3	3	0	2	12	6.3
at Eastern Michigan	12/12/16	*	13	1-2	.500	1-2	.500	2-2	1.000	0	1	1	2.3	0	2	6	0	0	5	6.2
Totals		8	221	21-76	.276	12-40	.300	8-12	.667	7	16	23	2.3	10	26	35	0	9	62	6.2

Games played: 10
Minutes/game: 22.1
Points/game: 6.2
FG Pct: 27.6
3FG Pct: 30.0
FT Pct: 66.7

Rebounds/game: 2.3
Assists/game: 2.6
Turnovers/game: 3.5
Assist/turnover ratio: 0.7
Steals/game: 0.9

2016-17 MONMOUTH WOMEN'S BASKETBALL

PLAYER CAPSULES



13 • Tyese Purvis

Senior • Guard • 5-9
Queens, NY (Francis Lewis/Monroe C.C.)

	2016-17	Career
Games Played	10	41
Games Started	8	32
Double-Doubles	0	1
Double Digit Scoring Games	6	21

2016-17 Season Highs

Points	26 at Eastern Michigan (12/12/16)
Rebounds	6 at Eastern Michigan (12/12/16)
Assists	3, twice, last at Sacred Heart (12/08/16)
Blocks	3 vs Clemson (11/19/16)
Steals	3 at Sacred Heart (12/08/16)
Minutes	37, twice, last at Lehigh (11/27/16)

Purvis' Career Highs

Points	26 at Eastern Michigan (12/12/16)
Rebounds	10 at Colgate (11/22/15)
Assists	4, two times, last vs. Marist (01/10/16)
Blocks	3 vs Clemson (11/19/16)
Steals	3, five times, last at Sacred Heart (12/08/16)
Minutes	37, twice, last at Lehigh (11/27/16)

#13 Purvis, Tyese

Opponent	Date	gs	min	Total		3-Pointers		Free throws		Rebounds				pts	avg						
				fg-fga	pct	3fg-fga	pct	ft-fa	pct	off	def	tot	avg								
at Robert Morris	11/13/16	*	29	5-12	.417	2-5	.400	3-4	.750	1	3	4	4.0	1	1	2	15	15.0			
at St. Francis Brooklyn	11/16/16	*	25	6-17	.353	2-11	.182	0-2	.000	0	0	0	2.0	5	2	1	14	14.5			
CLEMSON	11/19/16	*	37	5-14	.357	5-12	.417	2-2	1.000	1	2	3	2.3	1	1	2	3	17	15.3		
vs Hartford	11/26/16	*	29	2-13	.154	1-8	.125	2-4	.500	0	1	1	2.0	2	3	4	0	7	13.3		
at Lehigh	11/27/16	*	37	4-13	.308	3-10	.300	0-0	.000	1	1	2	2.0	2	0	1	0	11	12.8		
at Niagara	12/02/16	*	16	1-11	.091	1-9	.111	2-2	1.000	1	0	1	1.8	2	0	0	0	5	11.5		
at Canisius	12/04/16	*	23	2-14	.143	1-8	.125	0-0	.000	2	0	2	1.9	0	0	0	0	5	10.6		
at Sacred Heart	12/08/16	*	30	6-10	.600	5-7	.714	5-6	.833	1	3	4	2.1	3	3	3	0	3	22	12.0	
FDU	12/10/16	*	24	2-10	.200	2-7	.286	0-0	.000	1	1	2	2.1	2	0	3	0	6	11.3		
at Eastern Michigan	12/12/16	*	32	8-20	.400	5-14	.357	5-7	.714	1	5	6	2.5	1	0	3	1	26	12.8		
Totals			8	282	41-134	.306	27-91	.297	19-27	.704	9	16	25	2.5	19	10	19	5	10	128	12.8

Games played: 10
Minutes/game: 28.2
Points/game: 12.8
FG Pct: 30.6
3FG Pct: 29.7
FT Pct: 70.4

Rebounds/game: 2.5
Assists/game: 1.0
Turnovers/game: 1.9
Assist/turnover ratio: 0.5
Steals/game: 1.0
Blocks/game: 0.5



14 • Christina Mitchell

Senior • Forward • 6-4
Baltimore, MD (MATHS)

	2016-17	Career
Games Played	10	103
Games Started	10	53
Double-Doubles	0	11
Double Digit Scoring Games	2	18

2016-17 Season Highs

Points	12 at Sacred Heart (12/09/16)
Rebounds	12 vs Hartford (11/26/16)
Assists	1, four times, last at Eastern Michigan (12/12/16)
Blocks	3 at Canisius (12/02/16)
Steals	5 vs FDU (12/10/16)
Minutes	26, twice, last at Niagara (12/02/16)

Mitchell's Career Highs

Points	15 vs Iona (12/07/14)
Rebounds	21 vs Siena (12/04/15)
Assists	5, two times, last vs. Canisius (02/07/16)
Blocks	6, two times, last at Manhattan (02/11/16)
Steals	5 vs FDU (12/12/16)
Minutes	37 at Manhattan (02/11/16)

#14 Mitchell, Christina

Opponent	Date	gs	min	Total		3-Pointers		Free throws		Rebounds				pts	avg						
				fg-fga	pct	3fg-fga	pct	ft-fa	pct	off	def	tot	avg								
at Robert Morris	11/13/16	*	21	1-2	.500	0-0	.000	0-2	.000	0	5	5	5.0	3	0	0	2	2	2.0		
at St. Francis Brooklyn	11/16/16	*	18	0-1	.000	0-0	.000	2-2	1.000	3	3	6	5.5	3	0	2	1	2	2	2.0	
CLEMSON	11/19/16	*	26	0-2	.000	0-1	.000	3-4	.750	3	1	4	5.0	3	0	3	1	0	3	2.3	
vs Hartford	11/26/16	*	24	3-5	.600	0-0	.000	1-2	.500	4	8	12	6.8	3	0	0	1	2	7	3.5	
at Lehigh	11/27/16	*	18	4-5	.800	0-0	.000	0-0	.000	3	7	10	7.4	3	1	1	0	2	8	4.4	
at Niagara	12/02/16	*	26	5-9	.556	0-0	.000	0-0	.000	3	0	3	6.7	4	1	3	2	1	10	5.3	
at Canisius	12/04/16	*	19	0-5	.000	0-1	.000	0-0	.000	0	3	3	6.1	1	1	0	3	0	0	4.6	
at Sacred Heart	12/08/16	*	21	5-7	.714	0-1	.000	2-3	.667	1	2	3	5.8	2	0	3	1	0	12	5.5	
FDU	12/10/16	*	17	2-5	.400	0-2	.000	5-6	.833	0	3	3	5.4	0	0	3	2	5	9	5.9	
at Eastern Michigan	12/12/16	*	16	1-5	.200	0-0	.000	0-0	.000	4	3	7	5.6	2	1	1	1	0	2	5.5	
Totals			10	206	21-46	.457	0-5	.000	13-19	.684	21	35	56	5.6	24	4	16	14	12	55	5.5

Games played: 10
Minutes/game: 20.6
Points/game: 5.5
FG Pct: 45.7
3FG Pct: 0.0
FT Pct: 68.4

Rebounds/game: 5.6
Assists/game: 0.4
Turnovers/game: 1.6
Assist/turnover ratio: 0.3
Steals/game: 1.2
Blocks/game: 1.4

2016-17 MONMOUTH WOMEN'S BASKETBALL

PLAYER CAPSULES



20 • McKinzie Barker

Sophomore • Guard • 5-10
Bomont, WV (Clay County)

	2016-17	Career
Games Played	10	39
Games Started	7	35
Double-Doubles	0	0
Double Digit Scoring Games	1	2

2016-17 Season Highs

Points	12 vs Hartford (11/26/16)
Rebounds	9 vs Hartford (11/26/16)
Assists	2 at Robert Morris (11/13/16)
Blocks	
Steals	2, twice, last at Niagara (12/02/16)
Minutes	31 vs Hartford (11/26/16)

Barker's Career Highs

Points	14 at Colgate (11/22/15)
Rebounds	11 vs. Marist (01/10/16)
Assists	9 at Colgate (11/22/15)
Blocks	2, two times, last vs. Manhattan (02/02/16)
Steals	6 vs. Niagara (12/06/16)
Minutes	39 at Colgate (11/22/15)

#20 Barker, McKinzie

Opponent	Date	gs	min	Total		3-Pointers		Free throws		Rebounds					pts	avg					
				fg-fga	pct	3fg-fga	pct	ft-fa	pct	off	def	tot	avg	pf			a	t/o	blk	stl	
at Robert Morris	11/13/16	*	17	1-6	.167	0-1	.000	0-0	.000	3	2	5	5.0	2	2	0	0	0	2	2.0	
at St. Francis Brooklyn	11/16/16	*	12	0-3	.000	0-0	.000	0-0	.000	1	1	2	3.5	2	1	3	0	0	0	1.0	
CLEMSON	11/19/16		9	1-3	.333	0-0	.000	0-0	.000	0	2	2	3.0	1	1	1	0	2	2	1.3	
vs Hartford	11/26/16	*	31	6-10	.600	0-2	.000	0-0	.000	3	6	9	4.5	4	1	5	0	1	12	4.0	
at Lehigh	11/27/16	*	15	1-3	.333	1-2	.500	0-0	.000	0	1	1	3.8	3	1	0	0	0	3	3.8	
at Niagara	12/02/16	*	16	1-2	.500	1-1	1.000	0-0	.000	0	3	3	3.7	3	1	1	0	2	3	3.7	
at Canisius	12/04/16	*	16	2-5	.400	0-1	.000	1-1	1.000	0	1	1	3.3	4	0	1	0	0	5	3.9	
at Sacred Heart	12/08/16		12	1-3	.333	0-1	.000	1-2	.500	0	3	3	3.3	2	1	2	0	1	3	3.8	
FDU	12/10/16		16	3-11	.273	0-1	.000	2-2	1.000	2	2	4	3.3	1	1	1	0	3	8	4.2	
at Eastern Michigan	12/12/16	*	13	0-2	.000	0-1	.000	0-0	.000	0	4	4	3.4	3	0	2	0	1	0	3.8	
Totals			7	157	16-48	.333	2-10	.200	4-5	.800	9	25	34	3.4	25	9	16	0	10	38	3.8

Games played: 10
Minutes/game: 15.7
Points/game: 3.8
FG Pct: 33.3
3FG Pct: 20.0
FT Pct: 80.0

Rebounds/game: 3.4
Assists/game: 0.9
Turnovers/game: 1.6
Assist/turnover ratio: 0.6
Steals/game: 1.0



21 • Rhaiah Spooner-Knight

Senior • Guard • 5-10
Hamilton, New Zealand (Utah Valley/Sacred Heart)

	2016-17	Career (at MU)
Games Played	0	0
Games Started	0	0
Double-Doubles	0	0
Double Digit Scoring Games	0	0

Spooner-Knight's Season and Career Highs (at Monmouth)

Points	
Rebounds	
Assists	
Blocks	
Steals	
Minutes	

2016-17 MONMOUTH WOMEN'S BASKETBALL

PLAYER CAPSULES



22 • Alexa Middleton

Freshman • Forward • 6-2
Philadelphia, PA (Abington Friends)

	2016-17	Career
Games Played	10	10
Games Started	0	0
Double-Doubles	1	1
Double Digit Scoring Games	2	2

Middleton's 2016-17 Season and Career Highs

Points	14 vs Hartford (11/26/16)
Rebounds	15 at Eastern Michigan (12/12/16)
Assists	1, three times, last vs FDU (12/10/16)
Blocks	3 at St. Francis Brooklyn (11/16/16)
Steals	1, three times, last at Eastern Michigan (12/12/16)
Minutes	24 at Eastern Michigan (12/12/16)

#22 Middleton, Alexa

Opponent	Date	qs	min	Total		3-Pointers		Free throws		Rebounds				pf	a	t/o	blk	stl	pts	avg	
				fg-fga	pct	3fg-fga	pct	ft-fga	pct	off	def	tot	avg								
at Robert Morris	11/13/16		18	3-3	1.000	0-0	.000	0-2	.000	1	5	6	6.0	1	0	2	1	0	6	6.0	
at St. Francis Brooklyn	11/16/16		12	0-2	.000	0-0	.000	1-2	.500	2	4	6	6.0	4	0	1	3	0	1	3.5	
CLEMSON	11/19/16		18	2-4	.500	0-0	.000	0-1	.000	1	3	4	5.3	3	0	2	0	0	4	3.7	
vs Hartford	11/26/16		14	6-6	1.000	0-0	.000	2-2	1.000	0	5	5	5.3	2	0	2	0	1	14	6.3	
at Lehigh	11/27/16		14	2-5	.400	0-0	.000	0-2	.000	3	0	3	4.8	4	1	2	0	0	4	5.8	
at Niagara	12/02/16		9	1-3	.333	0-0	.000	0-0	.000	1	1	2	4.3	2	0	2	0	0	2	5.2	
at Canisius	12/04/16		13	3-5	.600	0-0	.000	0-1	.000	3	1	4	4.3	2	0	2	0	0	6	5.3	
at Sacred Heart	12/08/16		16	2-4	.500	0-0	.000	0-0	.000	3	4	7	4.6	4	1	3	0	1	4	5.1	
FDU	12/10/16		21	4-6	.667	0-0	.000	1-1	1.000	5	6	11	5.3	2	1	3	2	0	9	5.6	
at Eastern Michigan	12/12/16		24	5-7	.714	0-0	.000	0-0	.000	4	11	15	6.3	3	0	4	1	1	10	6.0	
Totals			0	159	28-45	.622	0-0	.000	4-11	.364	23	40	63	6.3	27	3	23	7	3	60	6.0

Games played: 10
Minutes/game: 15.9
Points/game: 6.0
FG Pct: 62.2
FT Pct: 36.4

Rebounds/game: 6.3
Assists/game: 0.3
Turnovers/game: 2.3
Assist/turnover ratio: 0.1
Steals/game: 0.3
Blocks/game: 0.7



23 • Adriana Zelaya

Freshman • Forward • 6-2
Goodyear, AZ

	2016-17	Career
Games Played	0	0
Games Started	0	0
Double-Doubles	0	0
Double Digit Scoring Games	0	0

Zelaya's 2016-17 Season and Career Highs

Points	
Rebounds	
Assists	
Blocks	
Steals	
Minutes	

2016-17 MONMOUTH WOMEN'S BASKETBALL

PLAYER CAPSULES



24 • Erica Balman

Sophomore • Center • 6-5
Marcellus, NY (Marcellus)

	2016-17	Career
Games Played	9	31
Games Started	0	1
Double-Doubles	0	0
Double Digit Scoring Games	0	0

2016-17 Season Highs

Points	2, twice, last at Canisius (12/04/16)
Rebounds	5 at Lehigh (11/27/16)
Assists	1 at St. Francis Brooklyn (11/16/16)
Blocks	1, twice, last at Niagara (12/02/16)
Steals	1 at Niagara (12/02/16)
Minutes	10 at Lehigh (11/27/16)

Balman's Career Highs

Points	8, two times, last at Fairfield (02/14/16)
Rebounds	10 at Quinnipiac (01/28/16)
Assists	1, three times, last at St. Francis Brooklyn (11/16/16)
Blocks	3 vs. Fairfield (03/05/16)
Steals	2 vs. Niagara (12/06/16)
Minutes	14 vs. Rider (02/25/16)

#24 Balman, Erica

Opponent	Date	gs	min	Total		3-Pointers		Free throws		Rebounds				pts	avg				
				fg-fga	pct	3fg-fga	pct	ft-fa	pct	off	def	tot	avg						
at Robert Morris	11/13/16	3	0-0	.000	0-0	.000	0-0	.000	0	1	1	1.0	2	0	0	0.0			
at St. Francis Brooklyn	11/16/16	4	0-0	.000	0-0	.000	0-0	.000	0	0	0	0.5	0	1	0	0.0			
CLEMSON	11/19/16	dnp	-	-	-	-	-	-	-	-	-	-	-	-	-	-			
vs Hartford	11/26/16	2	1-1	1.000	0-0	.000	0-0	.000	0	0	0	0.3	1	0	0	0.2			
at Lehigh	11/27/16	10	0-0	.000	0-0	.000	0-0	.000	2	3	5	1.5	2	0	1	0.5			
at Niagara	12/02/16	5	0-1	.000	0-0	.000	0-0	.000	0	0	0	1.2	0	0	1	0.4			
at Canisius	12/04/16	7	0-1	.000	0-0	.000	2-4	.500	0	0	0	1.0	2	0	0	0.2			
at Sacred Heart	12/08/16	1	0-0	.000	0-0	.000	0-0	.000	0	0	0	0.9	0	0	0	0.6			
FDU	12/10/16	2	0-2	.000	0-0	.000	0-0	.000	0	0	0	0.8	0	0	0	0.5			
at Eastern Michigan	12/12/16	1	0-0	.000	0-0	.000	0-0	.000	0	0	0	0.7	0	0	1	0.4			
Totals		0	35	1-5	.200	0-0	.000	2-4	.500	2	4	6	0.7	7	1	2	1	4	0.4

Games played: 9
Minutes/game: 3.9
Points/game: 0.4
FG Pct: 20.0
FT Pct: 50.0

Rebounds/game: 0.7
Assists/game: 0.1
Turnovers/game: 0.2
Assist/turnover ratio: 0.5
Steals/game: 0.1
Blocks/game: 0.2



32 • Taylor Nason

Freshman • Forward • 5-10
Lorton, VA (South County)

	2016-17	Career
Games Played	8	8
Games Started	5	5
Double-Doubles	0	0
Double Digit Scoring Games	1	1

Nason's 2016-17 Season and Career Highs

Points	11 at Canisius (12/04/16)
Rebounds	13 at Eastern Michigan (12/12/16)
Assists	5 vs FDU (12/10/16)
Blocks	1, three times, last vs FDU (12/10/16)
Steals	3, twice, last vs FDU (12/10/16)
Minutes	34 at Eastern Michigan (12/12/16)

#32 Nason, Taylor

Opponent	Date	gs	min	Total		3-Pointers		Free throws		Rebounds				pts	avg					
				fg-fga	pct	3fg-fga	pct	ft-fa	pct	off	def	tot	avg							
at Robert Morris	11/13/16	22	2-5	.400	0-0	.000	0-0	.000	3	5	8	8.0	1	1	2	0	1	4	4.0	
at St. Francis Brooklyn	11/16/16	22	0-3	.000	0-0	.000	1-2	.500	3	2	5	6.5	4	1	1	0	2	1	2.5	
CLEMSON	11/19/16	* 28	0-0	.000	0-0	.000	0-2	.000	3	5	8	7.0	2	0	2	0	3	0	1.7	
vs Hartford	11/26/16	dnp	-	-	-	-	-	-	-	-	-	-	-	-	-	-	-	-	-	
at Lehigh	11/27/16	dnp	-	-	-	-	-	-	-	-	-	-	-	-	-	-	-	-	-	
at Niagara	12/02/16	22	3-5	.600	1-1	1.000	0-2	.000	3	4	7	7.0	3	1	1	0	2	7	3.0	
at Canisius	12/04/16	* 29	5-8	.625	0-0	.000	1-2	.500	7	2	9	7.4	3	1	1	1	1	11	4.6	
at Sacred Heart	12/08/16	* 30	0-4	.000	0-0	.000	1-2	.500	4	6	10	7.8	2	2	2	1	1	1	4.0	
FDU	12/10/16	* 31	2-5	.400	0-0	.000	2-5	.400	3	2	5	7.4	3	5	1	1	3	6	4.3	
at Eastern Michigan	12/12/16	* 34	2-5	.400	0-0	.000	0-0	.000	4	9	13	8.1	3	1	1	0	1	4	4.3	
Totals		5	218	14-35	.400	1-1	1.000	5-15	.333	30	35	65	8.1	21	12	11	3	14	34	4.3

Games played: 8
Minutes/game: 27.3
Points/game: 4.3
FG Pct: 40.0
3FG Pct: 100.0
FT Pct: 33.3

Rebounds/game: 8.1
Assists/game: 1.5
Turnovers/game: 1.4
Assist/turnover ratio: 1.1
Steals/game: 1.8
Blocks/game: 0.4

2016-17 MONMOUTH WOMEN'S BASKETBALL

GAME 1

Official Basketball Box Score -- Game Totals -- Final Statistics
Monmouth vs Robert Morris
 11/13/16 1:05 pm at Moon Township, Pa. // Sewall Center

Monmouth 69 • 1-0 (0-0 MAAC)

#	Player	Total			3-Ptr			Rebounds			PF	TP	A	TO	Blk	Stl	Min
		FG-FGA	FG-FGA	FT-FTA	FG-FGA	FG-FGA	FT-FTA	Off	Def	Tot							
04	Kurt, Helena	* 2-7	1-3	6-8	0	2	2	3	11	5	2	0	1	26			
12	Jarnot, Alaina	* 3-10	2-3	1-2	1	3	4	0	9	5	4	0	3	27			
13	Purvis, Tyese	* 5-12	2-5	3-4	1	3	4	1	15	1	2	1	2	29			
14	Mitchell, Christina	* 1-2	0-0	0-2	0	5	5	3	2	0	0	2	0	21			
20	Barker, McKinzee	* 1-6	0-1	0-0	3	2	5	2	2	2	0	0	0	17			
02	Quintana, Kayla	1-3	1-2	0-0	0	1	1	3	3	0	3	1	0	8			
03	Graham, Rosa	3-7	2-3	6-6	0	0	0	3	14	0	1	0	1	15			
11	Shaw, Kayla	1-4	1-4	0-0	0	0	0	0	3	0	1	0	0	14			
22	Middleton, Alexa	3-3	0-0	0-2	1	5	6	1	6	0	2	1	0	18			
24	Balman, Erica	0-0	0-0	0-0	0	1	1	2	0	0	0	1	0	3			
32	Nason, Taylor	2-5	0-0	0-0	3	5	8	1	4	1	2	0	1	22			
Team					4			8									
Totals		22-59	9-21	16-24	13	31	44	19	69	14	17	6	8	200			

1st - FG %:	9-21	42.9%	2nd:	4-13	30.8%	3rd:	5-15	33.3%	4th:	4-10	40.0%	Game:	22-59	37.3%	Deadball
3FG %:	2-4	50.0%	FT %:	1-3	33.3%	Rebounds:	3-5	60.0%	Off:	16-24	66.7%	Def:	16-24	66.7%	2

Robert Morris 56 • 1-1 (0-0 NEC)

#	Player	Total			3-Ptr			Rebounds			PF	TP	A	TO	Blk	Stl	Min
		FG-FGA	FG-FGA	FT-FTA	FG-FGA	FG-FGA	FT-FTA	Off	Def	Tot							
00	DASHELL, Shakema	* 2-5	2-4	0-0	0	0	0	1	6	0	0	0	1	17			
11	NAVARRO, Rebeca	* 3-6	0-1	2-2	0	0	0	0	8	1	2	0	1	35			
10	BROWN, Janee	* 1-9	0-2	0-0	0	1	1	4	2	5	4	0	3	26			
21	MULRAIN, Mikalah	* 2-4	0-0	4-5	2	2	4	0	8	0	2	2	2	21			
22	SMITH, Megan	* 5-11	2-2	1-2	1	6	7	5	13	0	2	3	0	32			
01	JONES, Jocelynn	0-1	0-0	2-2	0	0	0	1	2	1	1	0	0	11			
03	BURTON-JONES, Jalyann	0-1	0-0	0-0	0	1	1	1	0	0	0	0	0	3			
04	STAMOLAMPROU, A Nik	4-12	1-3	2-2	0	4	4	3	11	2	6	0	0	28			
32	PLUVIOSE, Nadege	1-3	0-0	0-0	1	0	1	2	2	0	2	0	0	8			
33	EZEIGBO, Nneka	2-4	0-0	0-2	2	8	10	3	4	0	2	1	0	19			
Team					1			6									
Totals		20-56	5-12	11-15	7	28	35	20	56	9	20	6	7	200			

1st - FG %:	9-15	60.0%	2nd:	3-15	20.0%	3rd:	4-12	33.3%	4th:	6-14	42.9%	Game:	20-56	35.7%	Deadball
3FG %:	1-3	33.3%	FT %:	1-3	33.3%	Rebounds:	2-4	50.0%	Off:	11-15	73.3%	Def:	11-15	73.3%	2

Officials: Bill Titus, Pastor Torres, Cara Seggie
 Technical fouls: Monmouth-None. Robert Morris-None.
 Attendance: 573

Screen by periods	1st	2nd	3rd	4th	Total	Points	In	Off	2nd	Fast	Bench
Monmouth	22	12	13	22	69	22	14	8	5	30	
Robert Morris	16	7	14	19	56	22	10	13	0	19	

1st FG - MONW 4th-02:16, RMU 4th-01:00.
 Largest lead - MONW by 19 3rd-05:46, RMU by 8 1st-09:51.
 MONW led for 87:46, RMU led for 02:02. Game was tied for 00:00.

GAME 3

Official Basketball Box Score -- Game Totals -- Final Statistics
Clemson vs Monmouth
 Nov. 19 1:00 PM at OceanFirst Bank Center

Clemson 60 • 4-0

#	Player	Total			3-Ptr			Rebounds			PF	TP	A	TO	Blk	Stl	Min
		FG-FGA	FG-FGA	FT-FTA	FG-FGA	FG-FGA	FT-FTA	Off	Def	Tot							
00	Nelly Perry	f 5-18	2-9	0-0	4	3	7	4	12	2	2	0	1	31			
05	Danielle Edwards	f 5-14	3-7	6-6	3	4	7	2	19	2	2	1	4	39			
20	Sirah Diarra	g 1-3	1-2	0-0	2	4	6	0	3	0	1	0	0	8			
24	Ivy Atkism	g 0-1	0-0	0-0	1	0	1	2	0	0	1	0	1	10			
33	Alexis Carter	g 1-9	1-1	2-2	1	3	4	1	5	6	3	0	0	26			
03	Victoria Cardaci	0-1	0-1	0-0	0	1	1	2	0	0	0	0	1	19			
12	Aliyah Collier	6-8	0-1	1-2	3	6	9	4	13	0	4	2	4	30			
15	Jaja Alexander	0-1	0-0	0-0	0	1	1	3	0	2	0	1	5				
44	Kobi Thornton	4-6	0-0	0-0	3	3	6	1	8	0	5	0	1	32			
Team					2			3									
Totals		22-61	7-21	9-10	19	28	47	19	60	10	21	3	13	200			

1st - FG %:	7-18	38.9%	2nd:	6-16	37.5%	3rd:	4-15	26.7%	4th:	5-12	41.7%	Game:	22-61	36.1%	Deadball
3FG %:	3-7	42.9%	FT %:	1-4	25.0%	Rebounds:	2-3	66.7%	Off:	9-10	90.0%	Def:	9-10	90.0%	1

Monmouth 47 • 1-2

#	Player	Total			3-Ptr			Rebounds			PF	TP	A	TO	Blk	Stl	Min
		FG-FGA	FG-FGA	FT-FTA	FG-FGA	FG-FGA	FT-FTA	Off	Def	Tot							
13	Purvis, Tyese	f 5-14	5-12	2-2	1	2	3	1	17	1	2	3	1	37			
32	Nason, Taylor	f 0-0	0-0	0-2	3	5	8	2	0	2	0	3	0	28			
14	Mitchell, Christina	c 0-2	0-1	3-4	3	1	4	3	3	0	2	1	0	26			
04	Kurt, Helena	g 2-5	2-3	0-0	1	1	2	3	6	1	4	0	0	20			
12	Jarnot, Alaina	g 3-11	1-7	1-2	0	1	1	2	8	3	5	0	1	27			
02	Quintana, Kayla	1-0	0-0	0-0	0	0	0	0	0	0	0	0	0	1			
03	Graham, Rosa	1-7	0-2	2-5	1	2	3	2	4	3	2	0	1	21			
11	Shaw, Kayla	1-4	1-4	0-0	1	0	1	0	3	1	1	0	0	13			
20	Barker, McKinzee	1-3	0-0	0-0	2	2	1	2	1	1	0	2	0	9			
22	Middleton, Alexa	2-4	0-0	0-1	1	3	4	3	4	0	2	0	0	18			
Team					2			3									
Totals		15-50	9-29	8-16	13	20	33	17	47	10	25	4	8	200			

1st - FG %:	1-15	6.7%	2nd:	5-15	33.3%	3rd:	4-10	40.0%	4th:	5-10	50.0%	Game:	15-50	30.0%	Deadball
3FG %:	1-7	14.3%	FT %:	4-11	36.4%	Rebounds:	1-4	25.0%	Off:	9-29	31.0%	Def:	8-16	50.0%	2

Officials: Albert Titus, Natasha Camy, Brian Callahan
 Technical fouls: Clemson-None. Monmouth-None.
 Attendance: 812

Score by periods	1st	2nd	3rd	4th	Total	Points	In	Off	2nd	Fast	Bench
Clemson	23	13	12	12	60	26	10	11	4	21	
Monmouth	5	14	15	13	47	26	10	17	9	4	

1st FG - CU 4th-01:47, MONW 4th-03:10.
 Largest lead - CU by 21 1st-01:20, MONW None.
 CU led for 39:48, MONW led for 00:00. Game was tied for 00:12.

GAME 2

Official Basketball Box Score -- Game Totals -- Final Statistics
MONW vs St. Francis Brooklyn
 11/16/16 7:05 pm at Brooklyn Heights, NY

MONW 78 • 1-1

#	Player	Total			3-Ptr			Rebounds			PF	TP	A	TO	Blk	Stl	Min
		FG-FGA	FG-FGA	FT-FTA	FG-FGA	FG-FGA	FT-FTA	Off	Def	Tot							
04	Kurt, Helena	* 4-12	1-5	0-1	0	2	2	4	9	6	2	0	6	27			
12	Jarnot, Alaina	* 4-9	2-5	0-0	1	1	2	0	10	1	0	0	0	20			
13	Purvis, Tyese	* 6-17	2-11	0-2	0	0	0	5	14	2	1	0	1	25			
14	Mitchell, Christina	* 0-1	0-0	2-2	3	3	6	3	2	0	2	1	2	18			
20	Barker, McKinzee	* 0-3	0-0	0-0	1	1	2	2	0	1	3	0	0	12			
02	Quintana, Kayla	1-4	0-2	0-0	1	3	4	2	2	0	1	0	1	15			
03	Graham, Rosa	7-13	3-7	2-8	0	1	1	2	19	6	0	0	5	24			
10	Carbone, Dana	2-4	2-4	0-0	0	1	1	0	6	0	0	0	0	5			
11	Shaw, Kayla	5-10	3-7	1-2	2	2	0	14	0	2	0	0	16				
22	Middleton, Alexa	0-2	0-0	1-2	2	4	6	4	1	0	1	3	0	12			
24	Balman, Erica	0-0	0-0	0-0	0	0	0	0	0	1	0	0	0	4			
32	Nason, Taylor	0-3	0-0	1-2	3	2	5	4	1	1	1	0	2	22			
Team					2			5									
Totals		29-78	13-41	7-19	15	21	36	26	78	18	14	5	16	200			

1st - FG %:	7-19	36.8%	2nd:	7-17	41.2%	3rd:	8-19	42.1%	4th:	7-23	30.4%	Game:	29-78	37.2%	Deadball
-------------	------	-------	------	------	-------	------	------	-------	------	------	-------	-------	-------	-------	----------

2016-17 MONMOUTH WOMEN'S BASKETBALL

GAME 5

**Official Basketball Box Score -- Game Totals -- Final Statistics
Monmouth vs Lehigh**
11/27/16 2:05 p.m. at Stabler Arena - Bethlehem, Pa.

Monmouth 73 • 2-3

#	Player	Total			3-Ptr		Rebounds		PF	TP	A TO Blk Stl	Min			
		FG-FGA	FG-FGA	FT-FTA	Off	Def	Off	Def							
14	Mitchell, Christina	f	4-5	0-0	0-0	3	7	10	3	8	1	1	0	2	18
04	Kurt, Helena	g	2-8	0-3	0-0	1	3	4	2	4	4	5	0	0	23
12	Jarnot, Alaina	g	1-8	0-4	0-0	2	0	2	0	2	2	5	0	0	18
13	Purvis, Tyese	g	4-13	3-10	0-0	1	1	2	2	11	0	1	0	1	37
20	Barker, McKinzee	g	1-3	1-2	0-0	0	1	1	3	3	1	0	0	0	15
02	Quintana, Kayla	g	6-7	3-4	1-3	1	2	3	4	16	2	2	2	4	21
03	Graham, Rosa	g	3-8	0-5	2-3	0	3	3	2	8	5	3	0	0	19
10	Carbone, Dana	g	0-3	0-2	0-0	0	0	0	1	0	1	0	0	1	4
11	Shaw, Kayla	g	6-10	5-8	0-0	0	2	2	0	17	0	0	0	0	21
22	Middleton, Alexa	g	2-5	0-0	0-2	3	0	3	4	4	1	2	0	0	14
24	Balman, Erica	g	0-0	0-0	0-0	2	3	5	2	0	0	1	0	0	10
Team						3	5	8							
Totals			29-70	12-38	3-8	16	27	43	23	73	17	20	2	8	200

1st - FG %: 7-22 31.8% 2nd: 6-17 35.3% 3rd: 12-19 63.2% 4th: 4-12 33.3% Game: 29-70 41.4% Deadball Rebounds 1
3FG %: 3-13 23.1% 4-11 36.4% 4-8 50.0% 1-6 16.7% 12-38 31.6%
FT %: 0-0 0.0% 0-0 0.0% 0-4 0.0%

Lehigh 62 • 4-3

#	Player	Total			3-Ptr		Rebounds		PF	TP	A TO Blk Stl	Min			
		FG-FGA	FG-FGA	FT-FTA	Off	Def	Off	Def							
44	Williams, Mae	f	1-2	0-1	0-0	1	6	7	2	2	2	3	0	0	19
26	Grundhoffer, Gena	c	5-14	1-3	6-6	5	4	9	3	17	2	6	0	0	36
15	Buhr, Camryn	g	3-7	0-0	0-1	1	2	3	0	6	0	1	0	1	19
20	Mann, Quinci	g	7-16	2-5	5-6	1	2	3	2	21	3	2	0	0	31
22	Hedstrom, Hannah	g	1-3	0-0	1-2	0	5	5	4	3	2	2	0	2	24
05	Devaney, Bernadette	g	2-10	0-1	2-2	1	1	2	2	6	2	0	0	0	20
10	McCloskey, Kiernan	g	0-3	0-1	0-0	3	3	6	0	0	0	0	1	1	7
11	Campbell, Taylor	g	0-1	0-0	0-0	0	1	1	0	0	0	2	0	0	6
24	Menendez, Bryce	g	0-2	0-0	1-2	1	0	1	1	0	1	0	0	0	4
25	Burton, Kayla	g	0-0	0-0	0-0	0	0	0	0	0	0	1	0	0	9
30	Benz, Cameryn	g	1-3	0-0	0-0	1	1	2	0	2	0	4	0	0	11
33	Pascoe, Hailey	g	1-5	1-2	1-2	1	1	2	0	4	0	2	0	0	14
Team						5	1	6							
Totals			21-66	4-13	16-21	20	27	47	14	62	11	23	2	6	200

1st - FG %: 5-17 29.4% 2nd: 5-17 29.4% 3rd: 10-18 55.6% 4th: 1-14 7.1% Game: 21-66 31.8% Deadball Rebounds 3
3FG %: 1-4 25.0% 0-3 0.0% 3-4 75.0% 0-2 0.0% 4-13 30.8%
FT %: 4-6 66.7% 7-8 87.5% 2-3 66.7% 3-4 75.0% 16-21 76.2%

Officials: Lorraine Ellison, Dirk Link, Tasha Smith
Technical fouls: Monmouth-None. Lehigh-None.
Attendance: 544

Score by periods	1st	2nd	3rd	4th	Total
Monmouth	17	16	28	12	73
Lehigh	15	17	25	5	62

GAME 6

**Official Basketball Box Score -- Game Totals -- Final Statistics
Monmouth vs Niagara**
12/2/16 7:05 PM at 'Taps' Gallagher Center

Monmouth 45 • 2-4, 0-1

#	Player	Total			3-Ptr		Rebounds		PF	TP	A TO Blk Stl	Min			
		FG-FGA	FG-FGA	FT-FTA	Off	Def	Off	Def							
13	Purvis, Tyese	f	1-11	1-9	2-2	1	0	1	2	5	0	0	0	0	16
20	Barker, McKinzee	f	1-2	1-1	0-0	0	3	3	3	3	1	1	0	2	16
14	Mitchell, Christina	c	5-9	0-0	0-0	3	0	3	4	10	1	3	2	1	26
04	Kurt, Helena	g	1-5	0-1	0-0	1	6	7	2	2	3	3	0	0	23
12	Jarnot, Alaina	g	0-4	0-3	2-2	0	2	2	2	2	0	3	0	3	21
02	Quintana, Kayla	g	1-5	0-2	0-0	1	2	3	0	2	3	0	0	0	18
03	Graham, Rosa	g	0-2	0-1	1-2	0	1	1	0	1	0	3	0	0	15
10	Carbone, Dana	g	1-3	0-2	0-0	1	1	2	0	2	0	2	0	0	6
11	Shaw, Kayla	g	3-13	3-10	0-0	3	1	4	1	9	0	0	0	0	23
22	Middleton, Alexa	g	1-3	0-0	0-0	1	1	2	2	2	0	2	0	0	9
24	Balman, Erica	g	0-1	0-0	0-0	0	0	0	0	0	0	0	1	1	5
32	Nason, Taylor	g	3-5	1-1	0-2	3	4	7	3	7	1	1	0	2	22
Team						0	3	3							
Totals			17-63	6-30	5-8	14	24	38	19	45	9	20	3	9	200

1st - FG %: 5-13 38.5% 2nd: 5-17 29.4% 3rd: 5-18 27.8% 4th: 2-15 13.3% Game: 17-63 27.0% Deadball Rebounds 2
3FG %: 1-5 20.0% 3-8 37.5% 2-6 33.3% 0-11 0.0% 6-30 20.0%
FT %: 2-2 100.0% 0-0 0.0% 0-0 0.0% 3-6 50.0%

Niagara 66 • 3-3, 1-0

#	Player	Total			3-Ptr		Rebounds		PF	TP	A TO Blk Stl	Min			
		FG-FGA	FG-FGA	FT-FTA	Off	Def	Off	Def							
22	Rampado, Victoria	f	6-14	2-6	1-2	2	8	10	2	15	4	2	0	0	32
44	Stroemple, Kaylee	f	4-7	0-0	4-5	3	2	5	0	12	2	3	0	1	31
03	Corseelli, Tiffany	g	3-6	0-1	0-0	1	0	1	4	6	2	1	0	3	14
10	Sherburne, Jamie	g	2-7	0-2	2-2	0	5	5	2	6	1	3	0	0	29
24	Baughman, Morgan	g	3-5	3-5	0-0	1	1	2	0	9	4	2	0	0	24
01	Cosey, Carolyn	g	0-1	0-0	2-2	0	0	0	3	2	2	1	0	1	6
04	Moore, Jai	g	0-7	0-0	0-0	0	4	4	0	0	0	2	0	0	13
11	Bryant, Kharysma	g	0-0	0-0	0-0	0	2	2	0	0	0	1	0	0	3
21	McIntyre, Maggie	g	3-5	2-4	2-2	0	2	2	0	10	1	2	0	0	29
25	Granruth, Emily	g	1-2	0-1	0-0	1	1	2	0	2	0	1	0	0	3
33	Davidsdottir, Dagny	g	1-3	0-0	2-2	1	1	2	3	4	1	2	0	1	16
Team						2	7	9							
Totals			23-57	7-19	13-15	11	33	44	14	66	17	20	0	6	200

1st - FG %: 8-16 50.0% 2nd: 8-14 57.1% 3rd: 4-13 30.8% 4th: 3-14 21.4% Game: 23-57 40.4% Deadball Rebounds 1
3FG %: 2-3 66.7% 3-8 37.5% 2-6 33.3% 0-2 0.0% 7-19 36.8%
FT %: 0-0 0.0% 0-0 0.0% 4-6 66.7% 6-6 100.0% 13-15 86.7%

Officials: Kenneth Kelly, Michael Motta, Chad Titus
Technical fouls: Monmouth-None. Niagara-None.
Attendance: 335
Nia: McIntyre career high 10 pts.

Score by periods	1st	2nd	3rd	4th	Total
Monmouth	13	13	12	7	45
Niagara	21	19	14	12	66

GAME 7

**Official Basketball Box Score -- Game Totals -- Final Statistics
Monmouth vs Canisius**
12/04/16 2 p.m. at Buffalo, N.Y. - Koessler Athletic Center

Monmouth 54 • 2-5, 0-2 MAAC

#	Player	Total			3-Ptr		Rebounds		PF	TP	A TO Blk Stl	Min			
		FG-FGA	FG-FGA	FT-FTA	Off	Def	Off	Def							
13	Purvis, Tyese	f	2-14	1-8	0-0	2	0	2	0	5	0	0	0	0	23
20	Barker, McKinzee	f	2-5	0-1	1-1	0	1	1	4	5	1	1	0	0	16
32	Nason, Taylor	f	5-8	0-0	1-2	7	2	9	3	11	1	1	0	1	29
14	Mitchell, Christina	c	0-5	0-1	0-0	0	3	3	1	0	1	0	3	0	19
04	Kurt, Helena	g	2-8	0-2	0-0	1	1	2	1	4	1	0	0	0	15
02	Quintana, Kayla	g	1-4	0-1	0-0	1	1	2	0	2	1	1	0	0	11
03	Graham, Rosa	g	3-9	1-4	2-2	1	5	6	2	9	3	3	0	3	28
10	Carbone, Dana	g	0-1	0-1	0-0	0	0	0	0	0	0	1	0	0	4
11	Shaw, Kayla	g	3-10	1-6	0-0	0	2	2	1	7	0	2	0	0	17
12	Jarnot, Alaina	g	1-3	1-2	0-0	0	1	1	0	3	2	1	0	0	18
22	Middleton, Alexa	g	3-5	0-0	0-1	3	1	4	2	6	0	2	0	0	13
24	Balman, Erica	g	0-1	0-0	2-4	0	0	0	2	0	0	0	0	0	7
Team						2	4	6							
Totals			22-73	4-26	6-10	17	21	38	16	54	9	12	4	5	200

1st - FG %: 6-18 33.3% 2nd: 5-21 23.8% 3rd: 7-19 36.8% 4th: 4-15 26.7% Game: 22-73 30.1% Deadball Rebounds 1,1
3FG %: 3-6 50.0% 0-8 0.0% 1-7 14.3% 0-5 0.0% 4-26 15.4%
FT %: 0-1 0.0% 1-1 100.0% 0-0 0.0% 5-8 62.5% 6-10 60.0%

Canisius 74 • 2-5, 1-1 MAAC

#	Player	Total			3-Ptr		Rebounds		PF	TP	A TO Blk Stl	Min</
---	--------	-------	--	--	-------	--	----------	--	----	----	--------------	-------

2016-17 MONMOUTH WOMEN'S BASKETBALL

GAME 9

Official Basketball Box Score -- Game Totals -- Final Statistics
FDU vs Monmouth
 12/10/16 3:00 PM at OceanFirst Bank Center

FDU 63 • 2-7

#	Player	Total			3-Ptr			Rebounds			PF	TP	A	TO	Blk	Stl	Min
		FG-FGA	FG-FGA	FT-FTA	FG-FGA	FG-FGA	FT-FTA	Off	Def	Tot							
04	THOMAS, Brianna	f	2-14	1-7	1-2	2	3	5	1	6	3	8	0	1	26		
13	MARKOVIC, Amina	f	5-8	0-0	0-0	2	6	8	4	10	1	3	1	2	23		
25	BLANKENSHIP, Courtney	f	0-6	0-2	3-4	1	4	5	4	3	1	2	0	0	31		
01	COMLY, Madelynn	g	6-9	3-4	1-1	2	2	4	5	16	3	2	0	2	29		
22	BROWN, Kiana	g	4-10	2-2	1-2	0	4	4	4	11	2	6	0	1	37		
05	ZAMORA, Natalie	g	0-3	0-1	0-0	0	1	1	1	0	0	1	0	0	10		
10	M'BIKATA, Peniel	g	0-1	0-0	0-0	0	1	1	0	0	1	2	0	0	5		
11	FRANCILLON, Lauren	g	4-6	0-0	1-1	3	2	5	3	9	0	3	2	1	15		
12	COX, Rainey	g	0-0	0-0	0-0	0	0	0	0	0	0	0	0	0	1		
23	CLARK, Jenna	g	0-1	0-1	0-0	3	1	4	0	0	0	0	0	0	8		
24	GRAHAM, Elise	g	2-4	1-3	3-4	0	0	0	0	8	1	2	0	2	15		
32	HOLLIMAN, Jaqualah	g	0-0	0-0	0-0	0	0	0	0	0	0	0	0	0	0+		
Team						3	5	8			2						
Totals			23-62	7-20	10-14	16	29	45	22	63	12	31	3	9	200		

Monmouth 72 • 4-5

#	Player	Total			3-Ptr			Rebounds			PF	TP	A	TO	Blk	Stl	Min
		FG-FGA	FG-FGA	FT-FTA	FG-FGA	FG-FGA	FT-FTA	Off	Def	Tot							
13	Purvis, Tyese	f	2-10	2-7	0-0	1	1	2	2	6	0	3	0	0	24		
32	Nason, Taylor	f	2-5	0-0	2-5	3	2	5	3	6	5	1	1	3	31		
14	Mitchell, Christina	c	2-5	0-2	5-6	0	3	3	0	9	0	3	2	5	17		
03	Graham, Rosa	g	0-4	0-1	1-2	1	3	4	3	1	1	3	0	4	24		
12	Jarnot, Alaina	g	4-12	2-5	2-2	2	2	4	2	12	3	3	0	2	32		
02	Quintana, Kayla	g	1-1	0-0	1-1	1	1	2	2	3	1	1	0	0	6		
10	Carbone, Dana	g	1-1	1-1	2-2	0	2	2	0	5	0	0	0	0	2		
11	Shaw, Kayla	g	5-11	0-5	3-4	1	1	2	1	13	1	4	0	3	25		
20	Barker, McKinzee	g	3-11	0-1	2-2	2	2	4	1	8	1	1	0	3	16		
22	Middleton, Alexa	g	4-6	0-0	1-1	5	6	11	2	9	1	3	2	0	21		
24	Balman, Erica	g	0-2	0-0	0-0	0	0	0	0	0	0	0	0	0	2		
Team						2	2	4									
Totals			24-68	5-22	19-25	18	25	43	16	72	13	22	5	20	200		

Officials: Thomas Danaher, John Palermo, Bernard Myers
 Technical fouls: FDU-None. Monmouth-None.
 Attendance: 735

Score by periods	1st	2nd	3rd	4th	Total
FDU	6	24	13	20	63
Monmouth	14	22	21	15	72

GAME 10



Official Basketball Box Score -- Game Totals -- Final Statistics
Monmouth vs Eastern Michigan
 12-12-16 7:04 p.m. at Ypsilanti, Mich. (Convocation Center)



Monmouth 75 • 5-5

#	Player	Total			3-Ptr			Rebounds			PF	TP	A	TO	Blk	Stl	Min
		FG-FGA	FG-FGA	FT-FTA	FG-FGA	FG-FGA	FT-FTA	Off	Def	Tot							
14	Mitchell, Christina	f	1-5	0-0	0-0	4	3	7	2	2	1	1	1	0	16		
32	Nason, Taylor	f	2-5	0-0	0-0	4	9	13	3	4	1	1	0	1	34		
11	Shaw, Kayla	g	4-12	4-9	0-0	0	0	0	1	12	0	2	0	0	27		
12	Jarnot, Alaina	g	1-2	1-2	2-2	0	1	1	0	5	2	6	0	0	13		
20	Barker, McKinzee	g	0-2	0-1	0-0	0	4	4	3	0	0	2	0	1	13		
02	Quintana, Kayla	g	0-2	0-1	0-0	3	0	3	3	0	0	1	0	1	10		
03	Graham, Rosa	g	5-9	2-4	1-6	0	3	3	2	13	6	4	0	1	28		
10	Carbone, Dana	g	1-2	1-2	0-0	0	0	0	0	3	0	0	0	0	2		
13	Purvis, Tyese	g	8-20	5-14	5-7	1	5	6	1	26	0	3	1	1	32		
22	Middleton, Alexa	g	5-7	0-0	0-0	4	11	15	3	10	0	4	1	1	24		
24	Balman, Erica	g	0-0	0-0	0-0	0	0	0	0	0	0	1	0	0	1		
Team						2	0	2									
Totals			27-66	13-33	8-15	18	36	54	18	75	10	25	3	6	200		

Eastern Michigan 68 • 4-6

#	Player	Total			3-Ptr			Rebounds			PF	TP	A	TO	Blk	Stl	Min
		FG-FGA	FG-FGA	FT-FTA	FG-FGA	FG-FGA	FT-FTA	Off	Def	Tot							
03	EASLEY, Tori	f	2-8	0-0	2-2	3	3	6	2	6	0	2	1	2	33		
01	DAILEY, Sasha	g	7-17	2-7	3-5	0	4	4	2	19	3	3	0	6	34		
21	WEBB, Phillis	g	2-12	1-7	1-1	2	5	7	2	6	3	1	0	0	37		
22	DEANS, Sheyna	g	5-17	0-1	0-0	1	2	3	4	10	2	1	0	2	38		
42	ROBINSON, Micah	g	4-10	2-5	8-10	1	4	5	3	18	4	4	0	3	38		
05	MITCHELL, Nailah	g	1-2	1-2	0-0	1	2	3	3	3	0	1	0	1	10		
11	LEVINE, Esabelle	g	1-1	1-1	3-3	0	0	0	0	6	0	0	0	0	3		
31	RUSS, Jayla	g	0-0	0-0	0-0	0	0	0	0	0	0	0	0	0	0+		
44	NICKENS, Ashley	g	0-1	0-0	0-2	1	1	2	0	0	1	2	0	0	7		
Team						4	3	7									
Totals			22-68	7-23	17-23	13	24	37	16	68	13	14	1	14	200		

Officials: Cameron Inouye, Jesse Dickerson, Rober DeMinico
 Technical fouls: Monmouth-None. Eastern Michigan-None.
 Attendance: 525

Score by periods	1st	2nd	3rd	4th	Total
Monmouth	15	22	15	23	75
Eastern Michigan	10	16	17	25	68

Points	In	Off	2nd	Fast	Bench
MONW	26	4	25	2	52
EMU	22	32	9	10	9

Last FG - MONW 4th-00:36, EMU 4th-00:18.
 Largest lead - MONW by 15 3rd-06:54, EMU by 1 1st-06:03.
 MONW led for 37:08, EMU led for 01:35. Game was tied for 01:17.

Score tied - 2 times.
 Lead changed - 6 times.

GAME 11

GAME 12

2016-17 MONMOUTH WOMEN'S BASKETBALL

2016-17 Overall Season Stats

2016-17 Monmouth WBB Monmouth Combined Team Statistics (as of Dec 15, 2016) All games

RECORD:	OVERALL	HOME	AWAY	NEUTRAL
ALL GAMES	5-5	1-1	4-3	0-1
CONFERENCE	0-2	0-0	0-2	0-0
NON-CONFERENCE	5-3	1-1	4-1	0-1

#	Player	gp-gs	min	avg	Total		3-Point		F-Throw		Rebounds				pf	dq	a	to	blk	stl	pts	avg			
					fg-fga	fg%	3fg-fga	3fg%	ft-fa	ft%	off	def	tot	avg											
13	Purvis, Tyese	10-8	282	28.2	41-134	.306	27-91	.297	19-27	.704	9	16	25	2.5	19	1	10	19	5	10	128	12.8			
11	Shaw, Kayla	10-2	204	20.4	37-98	.378	27-73	.370	4-6	.667	7	11	18	1.8	8	0	4	16	0	8	105	10.5			
03	Graham, Rosa	10-2	219	21.9	26-67	.388	10-31	.323	17-34	.500	4	22	26	2.6	21	1	29	27	0	16	79	7.9			
12	Jarnot, Alaina	10-8	221	22.1	21-76	.276	12-40	.300	8-12	.667	7	16	23	2.3	10	0	26	35	0	9	62	6.2			
22	Middleton, Alexa	10-0	159	15.9	28-45	.622	0-0	.000	4-11	.364	23	40	63	6.3	27	0	3	23	7	3	60	6.0			
14	Mitchell, Christina	10-10	206	20.6	21-46	.457	0-5	.000	13-19	.684	21	35	56	5.6	24	0	4	16	14	12	55	5.5			
04	Kurt, Helena	7-7	155	22.1	14-50	.280	5-20	.250	6-9	.667	4	16	20	2.9	20	1	22	19	0	8	39	5.6			
20	Barker, McKinzee	10-7	157	15.7	16-48	.333	2-10	.200	4-5	.800	9	25	34	3.4	25	0	9	16	0	10	38	3.8			
32	Nason, Taylor	8-5	218	27.3	14-35	.400	1-1	1.000	5-15	.333	30	35	65	8.1	21	0	12	11	3	14	34	4.3			
02	Quintana, Kayla	10-1	112	11.2	11-30	.367	4-14	.286	4-8	.500	11	13	24	2.4	20	0	8	16	4	7	30	3.0			
10	Carbone, Dana	8-0	35	4.4	5-17	.294	4-15	.267	2-2	1.000	1	5	6	0.8	2	0	1	3	0	1	16	2.0			
24	Balman, Erica	9-0	35	3.9	1-5	.200	0-0	.000	2-4	.500	2	4	6	0.7	7	0	1	2	2	1	4	0.4			
Team											23	34	57												1
Total.....		10	2003		235-651	.361	92-300	.307	88-152	.579	151	272	423	42.3	204	3	129	204	35	99	650	65.0			
Opponents.....		10	2000		232-602	.385	66-183	.361	135-184	.734	120	296	416	41.6	170	-	141	207	31	82	665	66.5			

TEAM STATISTICS	MONW	OPP	Date	Opponent	Score	Att.	
SCORING	650	665	11/13/16	at Robert Morris	w 69-56	573	
Points per game	65.0	66.5	11/16/16	at St. Francis Brooklyn	L 78-87	335	
Scoring margin	-1.5	-	11/19/16	CLEMSON	L 47-60	812	
FIELD GOALS-ATT	235-651	232-602	11/26/16	vs Hartford	L 72-75	629	
Field goal pct	.361	.385	11/27/16	at Lehigh	w 73-62	544	
3 POINT FG-ATT	92-300	66-183	* 12/02/16	at Niagara	L 45-66	335	
3-point FG pct	.307	.361	* 12/04/16	at Canisius	L 54-74	760	
3-pt FG made per game	9.2	6.6	12/08/16	at Sacred Heart	w 65-54	201	
FREE THROWS-ATT	88-152	135-184	12/10/16	FDU	w 72-63	735	
Free throw pct	.579	.734	12/12/16	at Eastern Michigan	w 75-68	525	
F-Throws made per game	8.8	13.5					
REBOUNDS	423	416	* - Conference game				
Rebounds per game	42.3	41.6					
Rebounding margin	+0.7	-					
ASSISTS	129	141					
Assists per game	12.9	14.1					
TURNOVERS	204	207					
Turnovers per game	20.4	20.7					
Turnover margin	+0.3	-					
Assist/turnover ratio	0.6	0.7					
STEALS	99	82					
Steals per game	9.9	8.2					
BLOCKS	35	31					
Blocks per game	3.5	3.1					
ATTENDANCE	1547	3902					
Home games-Avg/Game	2-774	7-468					
Neutral site-Avg/Game	-	1-629					

Score by Periods	1st	2nd	3rd	4th	Totals
Monmouth	159	159	173	159	650
Opponents	156	173	174	162	665

2016-17 MONMOUTH WOMEN'S BASKETBALL



2016-17 TV-Radio Spot Chart



2

Kayla Quintana
Junior * Guard
Mesa, AZ



3

Rosa Graham
Freshman * Guard
Rochester, NY



4

Helena Kurt
Senior * Guard
Spanga, Sweden



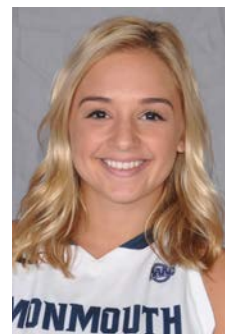
10

Dana Carbone
Junior * Forward
Toms River, NJ



11

Kayla Shaw
Freshman * Guard
Scottsdale, AZ



12

Alaina Jarnot
Freshman * Guard
Brooklyn Park, MN



13

Tyese Purvis
Senior * Guard
Queens, NY



14

Christina Mitchell
Senior * Forward
Baltimore, MD



20

McKinzee Barker
Sophomore * Guard
Bomont, WV



21

Rhaiah Spooner-Knight
Senior * Guard
Hamilton, New Zealand



22

Alexa Middleton
Freshman * Forward
Philadelphia, PA



23

Adriana Zelaya
Freshman * Forward
Goodyear, AZ



24

Erica Balman
Sophomore * Center
Marcellus, NY



32

Taylor Nason
Freshman * Forward
Lorton, VA



Jenny Palmateer
Head Coach
6th Season
North Carolina State '93



Mark Youngs
Assistant Coach
3rd Season
Hope College '99



Latara King
Assistant Coach
2nd Season
Florida Memorial '10



Jamie Nash
Assistant Coach
2nd Season
Nebraska Omaha '13