

M MONMOUTH

2016-17 WOMEN'S BASKETBALL

Athletic Communications Assistant: Chuck Marvel * cmarvel@monmouth.edu * 732-253-5443

MONMOUTH vs SACRED HEART

December 8, 2016 * 6:00 p.m.

William H. Pitt Center * Fairfield, CT

All-Time Series: SHU leads 18-11. Last: SHU won 56-42 (01/26/13)



Hawks
2-5, 0-2 MAAC

vs.

Pioneers
2-5, 0-0 NEC



GAME QUICK FACTS

MU head coach: Jenny Palmateer

Palmateer's career record: 71-93 (6th season)

Palmateer's MU record: same

Sacred Heart head coach: Jessica Mannetti

Mannetti's career record: 50-49 (4th season)

Mannetti's Sacred Heart record: same

Live Video: NECFrontRow.com

Audio: WMCX - 88.9 FM

Live Stats: www.sacredheartpioneers.com

Twitter: www.twitter.com/MUHawksWBB

THE MONMOUTH LINEUP

PROBABLE STARTERS

Pos. #	Name	Ht.	Cl.	PPG	RPG	Misc.
G 4	Helena Kurt	5-5	Jr.	5.6	3.1*	Started all 7 games this year (missed all of 2015-16 to injury)
G 12	Alaina Jarnot	5-7	Fr.	6.0	2.6*	5 assists each against Robert Morris and Hartford
F 13	Tyese Purvis	5-9	Sr.	10.6	1.9	Scored in double-figures 4 out of 7 games
C 14	Christina Mitchell	6-4	Sr.	4.6	6.1	Played 100th career game at Canisius
F 20	McKinzie Barker	5-10	So.	3.9	3.3	Started 34 of 36 career games

RESERVES

G 2	Kayla Quintana	5-9	Jr.	3.7	2.4	JUCO transfer from Scottsdale C.C. 16 pts, 4 steals at Lehigh
G 3	Rosa Graham	5-7	Fr.	8.7	2.9*	14 points at RMU... 19 points, 6 assists, 5 steals at SFB
F 10	Dana Carbone	5-11	Jr.	1.6	0.6	14 points (5-8 FG, 4-7 3 pt FG) vs. Fairfield last year
G 11	Kayla Shaw	5-10	Fr.	9.3	1.9	Freshman from Scottsdale, AZ. 17 pts (5-8 3FG) at Lehigh
G 21	Rhaiah Spooner-Knight	5-10	Sr.	13.8*	4.7*	Transfer from Utah Valley; Sitting out 2016-17 *Stats at UVU
F 22	Alexa Middleton	6-2	Fr.	5.3	4.3	Freshman from Philadelphia. 14 pts (6-6 FG), 5 rebs vs. Hartford
F 23	Adriana Zelaya	6-2	Fr.	-	-	Freshman from Goodyear, AZ
C 24	Erica Balman	6-5	So.	0.7	1.0	5 rebounds at Lehigh
F 32	Taylor Nason	5-10	Fr.	4.6	7.4	Season-high 11 points, nine rebounds at Canisius

*APG

After a tough conference road swing, which saw Monmouth fall to Niagara by a score of 66-45 and Canisius 74-54, the Hawks will travel to Fairfield, CT for a 6:00 PM matchup with former NEC opponent Sacred Heart. The team trailed early and shot just 27.0% from the field in the conference opener Friday night at Niagara, and shot just 22-73 (30.1%) including 4-26 (15.4%) from deep in the loss at Canisius on Sunday. Senior Christina Mitchell was the only Hawk to go in double-figures on Friday, while freshman Taylor Nason recorded 11 points and nine rebounds at Canisius on Sunday. Monmouth looks to get back on track Thursday at Sacred Heart, a team that holds a 18-11 all-time series advantage.

SCOUTING THE SACRED HEART PIONEERS

Sacred Heart holds an identical record with Monmouth at 2-5, currently suffering a three-game losing streak. After opening the season with a 56-44 win against MAAC opponent Fairfield, the Pioneers dropped two games to Brown and Lehigh. Their 68-62 loss at Lehigh came a week before Monmouth defeated the Mountain Hawks 73-62. The team earned a 77-69 win over Binghamton on November 23, but has lost their last three games at Buffalo, at home against Harvard, and at Hartford. Sacred Heart is led by senior guard/forward Hannah Kimmel, who is averaging 16.3 points per game and 6.9 rebounds per game through the first seven contests. Senior guard Adaysha Williams is contributing 11.9 points per game, including a 22-point output in the win at Binghamton.

ALL-TIME SERIES VS. SACRED HEART

Monmouth and Sacred Heart will be meeting for the 30th on Thursday, as the Pioneers have the 18-11 all-time advantage over the Hawks. The teams have not met since January 26, 2013 when Sacred Heart won 56-42 behind 43 combined points from Gabriell Washington and Kiley Evans. A year earlier (2011-12), the top-seeded Pioneers defeated Monmouth in the NEC Championship game by a score of 58-48.

2016-17 SCHEDULE

DATE	OPPONENT	TIME/RESULT
11.13	at Robert Morris	W, 69-56
11.16	at St. Francis Brooklyn	L, 87-78
11.19	CLEMSON	L, 60-47
11.26	vs. Hartford#	L, 75-72
11.27	at Lehigh#	W, 73-62
12.02	at Niagara*	L, 66-45
12.04	at Canisius*	L, 74-54
12.08	at Sacred Heart	6 p.m.
12.10	FAIRLEIGH DICKINSON	3 p.m.
12.12	at Eastern Michigan	7 p.m.
12.21	PROVIDENCE	7 p.m.
01.02	MARIST*	2 p.m.
01.04	FAIRFIELD*	7 p.m.
01.07	SAINT PETER'S*	2 p.m.
01.12	at Siena*	5 p.m.
01.15	CANISIUS*	2 p.m.
01.19	QUINNIPIAC*	11:30 a.m.
01.22	at Iona*	2 p.m.
01.26	at Fairfield*	7 p.m.
01.28	SIENA*	2 p.m.
02.02	RIDER*	7 p.m.
02.04	at Quinnipiac*	1 p.m.
02.10	at Saint Peter's*	7 p.m.
02.12	IONA*	2 p.m.
02.16	MANHATTAN*	5 p.m.
02.18	at Marist*	7 p.m.
02.21	at Rider*	7 p.m.
02.24	at Manhattan*	7 p.m.
02.26	NIAGARA*	2 p.m.
03.02-06	MAAC Championships^	TBA

* - Metro Atlantic Athletic Conference (MAAC) game

^ - MAAC Championships (Albany, NY)

- Christmas City Classic at Lehigh (Bethlehem, PA)

All Dates & Times Subject to Change

2016-17 MONMOUTH WOMEN'S BASKETBALL

UNIVERSITY QUICK FACTS

Location.....	West Long Branch, NJ
Founded.....	1933
Enrollment (Undergrad + Grad).....	6,400
President.....	Dr. Paul R. Brown
Athletics Director.....	Dr. Marilyn McNeil
Conference.....	MAAC
Nickname.....	Hawks
Colors.....	Midnight Blue and White
Arena.....	OceanFirst Bank Center (4,100)
Website.....	www.MonmouthHawks.com
First season of Division I.....	1982-83
Overall Division I Record.....	521-475
First season in MAAC.....	2013-14
Conference Championship.....	1987

PALMATEER QUICK FACTS

Hometown: South Amboy, N.J.
 Family: Husband (Terry Palmateer)

EDUCATION

High School: Hoffman, 1989
 College: North Carolina State, 1993

PLAYING EXPERIENCE

1989-93 North Carolina State

COACHING RECORD

ASSISTANT COACH

Meredith College - 1994-96
 University of Virginia - 1996-99
 North Carolina State University - 1999-2009
 Seton Hall University - 2010-11

HEAD COACH

Monmouth University - 2011-present

2011-12:	19-13
2012-13:	15-15
2013-14:	8-25
2014-15:	13-18
2015-16:	14-17
TOTAL:	69-88

WHERE THE HAWKS RANK IN THE MAAC, NCAA

Player/Team	Category	MAAC	NCAA
Team	Assists (13.3)	8	177
Team	Blocked Shots (3.6)	5	133
Team	Defensive Rebounds (25.9)	3	N/A
Team	Offensive Rebounds (14.4)	1	N/A
Team	Rebounds (40.3)	1	133
Team	Scoring Offense (62.6)	5	217
Team	Steals (8.9)	4	120
Team	3-pt. FG Made (9.0)	1	17
Team	3-pt. FG % (.285)	10	255
Team	Turnover Margin (+1.43)	3	120
Tyese Purvis	Scoring (10.6)	20	N/A
	3-pt. FG made (2.1)	7	158
	Minutes (28.0)	25	N/A
Christina Mitchell	Blocks (1.4)	5	133
	Defensive Rebounds (3.9)	15	N/A
	Offensive Rebounds (2.3)	6	N/A
	Rebounds (6.1)	14	215
Kayla Shaw	Scoring (9.3)	N/A	N/A
	3 pt. FG % (.375)	12	134
	3-pt. FG made (2.6)	3	67
Rosa Graham	Scoring (8.7)	N/A	N/A
	Assists (2.9)	13	N/A
	Steals (1.6)	9	N/A
	Assist/Turnover Ratio (1.1)	11	N/A
Helena Kurt	Assists (3.1)	9	N/A
	Steals (1.1)	N/A	N/A
	Assist/Turnover Ratio (1.2)	8	N/A
Alaina Jarnot	Assists (2.6)	N/A	N/A
	3-pt. FG made (1.1)	N/A	N/A
	Assist/Turnover Ratio (1.0)	12	N/A

OUTPERFORMING EXPECTATIONS

After being selected to finish ninth in last year's MAAC Preseason Coaches Poll, the Hawks went 11-9 in the conference en route to the semifinals. With a 66-59 loss to eventual runner-up Quinnipiac, Monmouth finished tied for fourth in the MAAC standings.

NEW YEAR, NEW LOOK

Monmouth welcomes eight new players for the 2016-17 campaign after losing seven from a season ago. The team features six freshman and two transfers, returning just six women from last year's roster. Senior guard Helena Kurt will return to the Monmouth rotation after missing all of last year with a knee injury.

PRESEASON POLLS

The Metro Atlantic Athletic Conference's (MAAC) Women's Basketball Head Coaches picked the Monmouth University women's basketball team to finish tied for seventh in the league this season. The Hawks, who were picked to finish ninth in last season's preseason coaches' poll, finished tied for fourth in the final standings and advanced to the MAAC Championship Semifinals.

KEY UP ESPN3

Monmouth University's Department of Athletics announced that 11 women's basketball games will be broadcast on ESPN3 this season. Home games with Clemson, Farleigh Dickinson, Providence, Marist, Fairfield, Saint Peter's, Canisius, Siena, Rider, Iona, and Niagara will all be broadcast on the platform. In addition, January 12th's matchup at Siena and February 16th home matchup with Manhattan will be broadcast on the MAAC's slate of ESPN3 games.

SIZING UP THE MAAC

The MAAC's coaches selected Quinnipiac to repeat as regular season champions with seven first-place votes and 117 points. Tournament Champion Iona was picked second, garnering the remaining four first-place votes and 114 points overall. Siena was picked third with 90 points edging Fairfield (82 points). Perennial MAAC power Marist was selected fifth with 72 points, while Canisius slotted in ahead of the Hawks for sixth with 58 points. The Hawks and Manhattan each collected 52 points to tie for seventh, ahead of Niagara (42), Rider (24) and Saint Peter's (21).



Senior forward Tyese Purvis

2016-17 MONMOUTH WOMEN'S BASKETBALL

RETURNERS

The 2016-17 Hawks return three starters from last season in guards **Tyese Purvis** and **McKinzee Barker** and forward **Christina Mitchell**. Purvis knocked down 67 three-point field goals a year ago, while Barker led the Hawks in assists and assist-to-turnover ratio. Mitchell led Monmouth with 8.9 rebounds per game and 55 blocked shots. Junior point guard **Helena Kurt** (Spanga, Sweden/Igelstavikens Gymnasium) also returns after missing all of last season due to injury. Kurt contributed 10.2 points and 4.6 assists per game in 2014-15. **Dana Carbone** is another Hawk whose size and ability to step out beyond the three-point arc presents problems for opponents. Carbone saw action in 30 games last season, averaging 4.8 points, 1.7 rebounds and 1.0 assists per game, while shooting 32.6 percent from long range. She scored in double figures four times, including a career-high 19 points on 5-of-10 shooting and 4-of-8 from long range at Fairleigh Dickinson. **Erica Balman** rounds out the returning frontcourt players for Monmouth. Balman, who saw action in 22 games including one start and averaging 1.7 points and 2.3 rebounds per game as a freshman, added muscle and polish to her post moves over the summer. Balman narrowly missed a double-double with eight points and 10 rebounds at Quinnipiac last year and finished the season with a flurry defensively, blocking a season-high three shots in the Hawks' MAAC Quarterfinal victory over Fairfield.

FRESHMAN PHENOMS

A 5-foot-7 guard from Brooklyn Park, MN, **Alaina Jarnot** was a 1,000-point scorer at Maranatha Christian Academy, she also holds the Minnesota single-season assists record and has led the state in assists in each of the past two years at 9.1 and 8.8 assists per game, respectively. Jarnot was eighth in the nation in assists last season. Another 5-7 guard, **Rosa Graham** was named First Team Private Parochial in her freshman and sophomore years, before an injury kept her out for two months last season. She led the Kings to a state championship as a sophomore, two sectional championships and was named to the sectionals all-tournament team as a sophomore. **Alexa Middleton** is a 6-foot-2 power forward/center from Abington Friends School in Jenkintown, PA. She's a three-time All-Friends League and InterLeague All-Star selection, as well as a City Classic All-Star in each of the last two years. Middleton was named MVP of the International Student Athletic Academy Tournament in 2013 and 2015, while earning the same honor at the Nazareth Academy Tournament in 2014. **Taylor Nason** is a 5-foot-10 forward from South County High School in Lorton, VA. She ranked third in the state of Virginia with 13.4 rebounds per game as a junior and compiled 19 double-doubles. She grabbed double-digit rebounds in 22 of her 25 games last year, including three with 20 or more. Nason led the Stallions to a second-place finish in the district as a junior. She was named Second Team All-Region and Third Team Northern Virginia Women's Basketball Coaches Association All-Northern Virginia last season, to go along with Patriot District First Team and All-District Tournament Team honors. **Kayla Shaw** is a 5-foot-10 guard from Chaparral High School in Scottsdale, AZ. She earned a three-star rating with an 88 grade on ESPN.com as the No. 90 player at her position. She developed a reputation as a sharpshooter, having shot 59.5 percent (184-309) from the floor and 52.4 percent (75-143) from long range, while averaging 21.1 points per game last season. Her three-point percentage ranked third in the nation last year. A 1,000-point scorer, Shaw earned All-State Honorable Mention, All-Division I Section II First and Second Team honors and the All-City Award twice. **Adriana Zelaya** is a 6-foot-2 stretch four who played for Coach Cory Rojeck at Millennium High School in Goodyear, AZ. Zelaya led Millennium to a State Division I Runner-Up finish as a junior and was named All-Section. Zelaya was named to the USJN All-Star Team and the PBR Super 64 All-Star Team in 2015.

TALENTED TRANSFERS

The Hawks added two transfers to the 2016-17 roster in **Rhaiah Spooner-Knight** and **Kayla Quintana**. Born in Raglan, New Zealand, Spooner-Knight was a three-year letter winner at Utah Valley University. She was named to the All-WAC Second Team as a sophomore in 2014-15 after being selected to the All-Newcomer Team as a freshman. Spooner-Knight scored in double figures in 53 of 72 games played over three seasons at UVU, including eight of 20 points or more. As a sophomore, she averaged 13.4 points, 5.3 rebounds and 1.8 assists per game, and upped her scoring to 13.8 ppg., while also averaging 4.7 rebounds in 12 games as a junior. Rhaiah scored a career-high 27 points against Southern Utah and added 23 points at Oregon in her junior season. "Q" earned Second Team All-Arizona Community College Athletic Conference and First Team All-Region in her sophomore season at Scottsdale Community College. She led the Fighting Artichokes to the Region I Division II playoffs, averaging 13.1 points and 3.9 rebounds as a sophomore and 7.0 points and 4.7 rebounds as a freshman.

STATS EXTRA

2015-16 MONMOUTH DOUBLE-FIGURE GAMES

POINTS	REBOUNDS
Tyese Purvis - 4	Christina Mitchell - 2
Kayla Shaw - 3	
Rosa Graham - 2	
Helena Kurt - 1	
Alaina Jarnot - 1	
McKinzee Barker - 1	
Alexa Middleton - 1	
Kayla Quintana - 1	
Christina Mitchell - 1	
Taylor Nason - 1	
DOUBLE-DOUBLES	ASSISTS

MONMOUTH'S RECORD WHEN...

	ALL	MAAC
Leading or tied at halftime:	2-1	0-0
Trailing at halftime:	0-4	0-2
Shoot 50 percent or higher:	0-0	0-0
Shoot less than 50 percent:	2-5	0-2
Shoot higher percentage than opp.:	2-1	0-0
Shoot lower percentage than opp.:	0-4	0-2
Shoot same percentage as opp.:	0-0	0-0
Opp. shoot less than 50 percent:	2-4	0-1
Opp. shoot 50 percent or higher:	0-1	0-1
Score less than 60 points:	0-3	0-2
Score 60-69 points:	1-0	0-0
Score 70-79 points:	1-2	0-0
Score 80-89 points:	0-0	0-0
Score 90-plus points:	0-0	0-0
Opp. scores less than 50 points:	0-0	0-0
Opp. scores 50-59 points:	1-0	0-0
Opp. scores 60-69 points:	1-2	0-1
Opp. scores 70-79 points:	0-2	0-1
Opp. scores 80-89 points:	0-1	0-0
Opp. scores 90 points or more:	0-0	0-0
Outrebound opponent:	1-1	0-0
Outrebounded by opponent:	1-4	0-2
Rebounds are equal:	0-0	0-0
Commit fewer turnovers than opp.:	2-2	0-1
Commit same turnovers as opp.:	0-1	0-1
Commit more turnovers than opp.:	0-2	0-0
Games decided by 5 or fewer points:	0-1	0-0
Overtime games:	0-0	0-0
Games vs. ranked opponents:	0-0	0-0
Games following a loss:	1-3	0-1
Games following a win:	0-2	0-1
More bench points than opp.:	2-4	0-2
Equal/fewer bench points than opp.:	0-1	0-0
Attempt 15 or more 3-pointers:	2-5	0-2
Attempt 14 or fewer 3-pointers:	0-0	0-0

2016-17 MONMOUTH WOMEN'S BASKETBALL

MEDIA SERVICES

INTERVIEWS WITH COACH PALMATEER

Media wishing to interview Coach Palmateer must notify Chuck Marvel of the Monmouth Athletics Communications office and twenty-four hours of advance notice is appreciated. Coach Palmateer is available most weekday mornings for interviews or after practice.

PRACTICE COVERAGE

Monmouth's practices are open to the media. Shooting of video and still photos is limited to the first 20 minutes of each practice unless other arrangements are made through the Athletics Communications office.

MEDIA CREDENTIALS

Arrangements for media credentials for Monmouth home basketball games must be made through Chuck Marvel of the Monmouth Athletics Communications office. Requests by accredited media members should be made in writing and submitted on company letterhead to Chuck Marvel. Credentials must be requested at least 48 hours prior to requested game.

HOW TO REACH US:

ATHLETIC COMMUNICATIONS ASSISTANT:

CHUCK MARVEL

Phone: 732.263.5443

Fax: 732.263.5770

Email: cmarvel@monmouth.edu

Cell Phone: 302.388.3089

DRAWING INSPIRATION OFF THE COURT

Days before her 10th birthday, freshman forward Adriana Zelaya was diagnosed with pancreatic cancer. After surgeries that spanned nearly nine hours and an uncertainty of ever running again, Zelaya is now cancer-free. Monmouth's women's basketball team has teamed up with Project Purple to raise awareness for pancreatic cancer, and will wear purple t-shirts throughout the month of November, which stands as pancreatic cancer awareness month. The team will also wear gold shoelaces during the home opener against Clemson on November 19 to raise awareness for pediatric cancer.

HAWKS PLAY 4KAY

Since Head Coach Jenny Palmateer took over the reins of the Monmouth women's basketball team, Play 4Kay Day has traditionally taken on greater meaning. Palmateer both played and coached a combined 14 years under Kay Yow, the longtime North Carolina State Head Coach for whom the cause is named. Play 4Kay is a 501 (c)(3) charitable organization committed to being a part of finding an answer in the fight against women's cancers through raising money for scientific research, assisting the underserved and unifying people for a common cause.

CHRISTMAS CITY CLASSIC

Monmouth will travel to Bethlehem, PA on November 26 and 27 for the Christmas City Classic. The Hawks will face Hartford on Saturday at 2:00 PM, and takes on either Lehigh or Norfolk on Sunday. Last year, Monmouth hosted the Hawk Holiday Classic on December 29 and 30. The Hawks bested St. Francis Brooklyn 63-54 before falling to LaSalle 65-50. A rematch with St. Francis Brooklyn is in line after Monmouth faces Robert Morris, as the Hawks are scheduled to take on the Terriers in New York on November 16.

HAWKS ON THE MOVE

Eight out of Monmouth's first ten games will be on the road, with the lone home games coming on November 19 against ACC foe Clemson and December 10 versus Farleigh Dickinson. After a December 12 matchup at Eastern Michigan, the Hawks will return to the OceanFirst Bank Center for four straight home games.

PICKING UP WHERE SHE LEFT OFF

Before Helena Kurt suffered a season-ending knee injury last year, the Spanga, Sweden native averaged 10.2 points and 4.6 assists in 2015-16. In her first game back, Kurt matched those numbers almost identically, scoring 11 points and adding 5 assists in Monmouth's win over Robert Morris. In her second game back at St. Francis Brooklyn, Kurt stuffed the stat sheet with nine points, six assists, and a career-high six steals.

GOLDEN GRAHAM

Freshman Rosa Graham wasted no time making her mark, as her 14 points are the most by any Monmouth freshman in their debut since at least 2004-2005. The Rochester, NY native buried all six of her free throw attempts in Monmouth's 69-56 win at Robert Morris. She followed that up by scoring 19 points at St. Francis Brooklyn on November 16, adding six assists and five steals on the night.

DEPTH DISPLAY

In the first quarter of Monmouth's season-opener at Robert Morris, eleven Hawks saw the floor. By the end of the game, nine players played at least 14 minutes, with senior Tyese Purvis leading the way at 29 minutes. Freshman Alaina Jarnot saw the second most minutes, playing 27 in her collegiate debut. Three days later at St. Francis Brooklyn, 12 Hawks earned playing time.

RAREFIED AIR

Christina Mitchell's 21 rebounds last year as part of her second double-double of the year (13 points) against Siena on Dec. 4 were the most by a Monmouth player since the 1987-88 season, when Sandra Cook grabbed 21 or 22 rebounds on four occasions. The all-time Monmouth single-game record of 23 rebounds is held by Linda Wilson, who did it three times in the 1983-84 and 1984-85 seasons. Mitchell's previous career high was 17 boards. The double-double was the eighth of Mitchell's career and her seventh in a span of 32 games played. Mitchell grabbed 22 rebounds in two games against Hartford (12) and Lehigh (10) this season.



Senior center Christina Mitchell

2016-17 MONMOUTH WOMEN'S BASKETBALL

JARNOT NOT SKIPPING A BEAT

As the state of Minnesota's all-time leader in assists while also scoring over 2,000 points in her high school career, freshman Alaina Jarnot knows how to fill a stat sheet. In the first two games of her Monmouth career, Jarnot totaled 19 points, six assists, six rebounds, and three steals. The Brooklyn Park, MN native has averaged 24.2 minutes per game.

MIDDLETON IN THE...MIDDLE

Freshman Alexa Middleton has made a mark in the early part of the season, grabbing six rebounds in each of her first two games. As a high school standout from Philadelphia, PA, Middleton averaged a double-double for her career and more than 12 points and 12 rebounds in her senior season. She added three blocks in Monmouth's 87-78 loss to St. Francis Brooklyn on November 16. Middleton scored in double-figures for the first time in just the fourth game of her career, dropping 14 points while grabbing 5 rebounds against Hartford on November 26.

THREE'S COMPANY

After its fifth game versus Lehigh on November 27, Monmouth ranked 6th in the nation in three-point field goals per game (10.6). Tyese Purvis racked up 13 threes while freshman Kayla Shaw has buried 14 threes, including nine within a two game span against Hartford and Lehigh. Fellow freshmen Rosa Graham and Alaina Jarnot contributed seven 3-pointers each. Through five games, Monmouth is on pace to make 307 three-point field goals, which would be the most in program history. The previous mark was set last year, when the 2015-16 squad made 238.

NASON DOMINATION

Freshman Taylor Nason has been dominant on the glass, leading the Hawks in rebounds per game after the first three games of the season (7.0). The Lorton, VA native pulled down eight rebounds in the season opener at Robert Morris, five in the Hawks' loss at St. Francis Brooklyn, and another eight in Monmouth's home opener versus Clemson. Nason totaled a season-high 11 points and nine rebounds in the loss at Canisius on December 4.

LEADING THE MAAC

Monmouth led the Metro Atlantic Conference in offensive rebounds, defensive rebounds, total rebounds, and 3-pt field goals made per game (10.6) after the fifth game of the season at Lehigh. Senior Christina Mitchell led the team in all rebounding categories, pulling down 7.4 per game. Freshman Kayla Shaw led the team with 2.8 threes made per game, with senior Tyese Purvis making 2.6 per game.

QUINTESSENTIAL QUINTANA

After scoring just 1.5 points per game through the first four games of the season, Kayla Quintana burst onto the scene in Monmouth's 73-62 win over Lehigh on November 27. The junior transfer scored a season-high 16 points (6-7 FG) off the bench while adding four steals, three rebounds, two assists, and two blocks.

SHARPSHOOTING SHAW

Freshman guard Kayla Shaw has been exceptional from three-point range in the early part of the season. Through the first five games of Monmouth's season, Shaw hit 17 threes in total. The Scottsdale, AZ native scored 17 points in just 21 minutes of action at Lehigh, nailing five three-pointers off the bench. Shaw previously scored 12 points against Hartford on November 26 with four 3-pointers, and scored 14 points at St. Francis Brooklyn on three 3-pointers.

100 CLUB

Senior center Christina Mitchell played her 100th career game in a Monmouth uniform on December 4 at Canisius. The Baltimore, MD native ranks top-10 in program history for rebounds and has the fifth most blocks in Monmouth history.

2016-17 MONMOUTH WOMEN'S BASKETBALL

SEASON SUPERLATIVES

Points	19	Graham, Rosa at St. Francis Brooklyn (11/16/16)
	17	Shaw, Kayla at Lehigh (11/27/16)
	17	Purvis, Tyese vs Clemson (11/19/16)
	16	Quintana, Kayla at Lehigh (11/27/16)
	15	Purvis, Tyese at Robert Morris (11/13/16)
Field Goals Made	7	Graham, Rosa at St. Francis Brooklyn (11/16/16)
	6	Quintana, Kayla at Lehigh (11/27/16)
	6	Shaw, Kayla at Lehigh (11/27/16)
	6	Middleton, Alexa vs Hartford (11/26/16)
	6	Barker, McKinzee vs Hartford (11/26/16)
	6	Purvis, Tyese at St. Francis Brooklyn (11/16/16)
Field Goal Att.	17	Purvis, Tyese at St. Francis Brooklyn (11/16/16)
	14	Purvis, Tyese at Canisius (12/04/16)
	14	Purvis, Tyese vs Clemson (11/19/16)
FG Pct (min 5 made)	1.000 (6-6)	Middleton, Alexa vs Hartford (11/26/16)
	.857 (6-7)	Quintana, Kayla at Lehigh (11/27/16)
3-Point FG Made	5	Shaw, Kayla at Lehigh (11/27/16)
	5	Purvis, Tyese vs Clemson (11/19/16)
3-Point FG Att.	12	Purvis, Tyese vs Clemson (11/19/16)
	11	Purvis, Tyese at St. Francis Brooklyn (11/16/16)
3-Pt FG Pct (min 2 made)	.750 (3-4)	Quintana, Kayla at Lehigh (11/27/16)
	.667 (2-3)	Graham, Rosa vs Hartford (11/26/16)
	.667 (2-3)	Kurt, Helena vs Clemson (11/19/16)
	.667 (2-3)	Jarnot, Alaina at Robert Morris (11/13/16)
	.667 (2-3)	Graham, Rosa at Robert Morris (11/13/16)
Free Throws Made	6	Kurt, Helena at Robert Morris (11/13/16)
	6	Graham, Rosa at Robert Morris (11/13/16)
Free Throw Att.	8	Graham, Rosa at St. Francis Brooklyn (11/16/16)
	8	Kurt, Helena at Robert Morris (11/13/16)
FT Pct (min 3 made)	1.000 (6-6)	Graham, Rosa at Robert Morris (11/13/16)
	.750 (6-8)	Kurt, Helena at Robert Morris (11/13/16)
	.750 (3-4)	Mitchell, Christina vs Clemson (11/19/16)
	.750 (3-4)	Purvis, Tyese at Robert Morris (11/13/16)
Rebounds	12	Mitchell, Christina vs Hartford (11/26/16)
	10	Mitchell, Christina at Lehigh (11/27/16)
Assists	6	Kurt, Helena at St. Francis Brooklyn (11/16/16)
	6	Graham, Rosa at St. Francis Brooklyn (11/16/16)
Steals	6	Kurt, Helena at St. Francis Brooklyn (11/16/16)
	5	Graham, Rosa at St. Francis Brooklyn (11/16/16)
Blocked Shots	3	Mitchell, Christina at Canisius (12/04/16)
	3	Purvis, Tyese vs Clemson (11/19/16)
	3	Middleton, Alexa at St. Francis Brooklyn (11/16/16)
Turnovers	7	Graham, Rosa vs Hartford (11/26/16)
	6	Jarnot, Alaina vs Hartford (11/26/16)
Fouls	5	Graham, Rosa vs Hartford (11/26/16)
	5	Kurt, Helena vs Hartford (11/26/16)
	5	Purvis, Tyese at St. Francis Brooklyn (11/16/16)
Minutes	37	Purvis, Tyese at Lehigh (11/27/16)
	37	Purvis, Tyese vs Clemson (11/19/16)
	31	Barker, McKinzee vs Hartford (11/26/16)
	29	Nason, Taylor at Canisius (12/04/16)
	29	Purvis, Tyese vs Hartford (11/26/16)

2016-17 MONMOUTH WOMEN'S BASKETBALL

Monmouth University Roster

Numerical

No.	NAME	CL.	Pos.	Ht.	HOMETOWN/HIGH SCHOOL/LAST SCHOOL
2	Kayla Quintana	Jr.	G	5-8	Mesa, AZ/Mesa/Scottsdale CC
3	Rosa Graham	Fr.	G	5-7	Rochester, NY/Bishop Kearney
4	Helena Kurt	Sr.	G	5-5	Spanga, Sweden/Igelstavikens Gymnasium
10	Dana Carbone	Jr.	F	5-11	Toms River, NJ/Monsignor Donovan
11	Kayla Shaw	Fr.	G	5-10	Scottsdale, AZ/Chaparral
12	Alaina Jarnot	Fr.	G	5-7	Brooklyn Park, MN/Maranatha Christian Academy
13	Tyese Purvis	Sr.	G	5-9	Queens, NY/Francis Lewis/Monroe C.C.
14	Christina Mitchell	Sr.	F	6-4	Baltimore, MD/MATHS
20	McKinzee Barker	So.	G	5-10	Bomont, WV/Clay County
21	Rhaiah Spooner-Knight	Sr.	G	5-10	Hamilton, New Zealand/Sacred Heart/Utah Valley
22	Alexa Middleton	Fr.	F	6-2	Philadelphia, PA/Abington Friends
23	Adriana Zelaya	Fr.	F	6-2	Goodyear, AZ/Millennium
24	Erica Balman	So.	C	6-5	Marcellus, NY/Marcellus
32	Taylor Nason	Fr.	F	5-10	Lorton, VA/South County

Alphabetical

No.	NAME	CL.	Pos.	Ht.	HOMETOWN (HIGH SCHOOL/LAST SCHOOL)
24	Erica Balman	So.	C	6-5	Marcellus, NY/Marcellus
20	McKinzee Barker	So.	G	5-10	Bomont, WV/Clay County
10	Dana Carbone	Jr.	F	5-11	Toms River, NJ/Monsignor Donovan
3	Rosa Graham	Fr.	G	5-7	Rochester, NY/Bishop Kearney
12	Alaina Jarnot	Fr.	G	5-7	Brooklyn Park, MN/Maranatha Christian Academy
4	Helena Kurt	Sr.	G	5-5	Spanga, Sweden/Igelstavikens Gymnasium
22	Alexa Middleton	Fr.	F	6-2	Philadelphia, PA/Abington Friends
14	Christina Mitchell	Sr.	F	6-4	Baltimore, MD/MATHS 1
32	Taylor Nason	Fr.	F	5-10	Lorton, VA/South County
13	Tyese Purvis	Sr.	G	5-9	Queens, NY/Francis Lewis/Monroe C.C.
2	Kayla Quintana	Jr.	G	5-8	Mesa, AZ/Mesa/Scottsdale CC
11	Kayla Shaw	Fr.	G	5-10	Scottsdale, AZ/Chaparral
21	Rhaiah Spooner-Knight	Sr.	G	5-10	Hamilton, New Zealand/Sacred Heart/Utah Valley
23	Adriana Zelaya	Fr.	F	6-2	Goodyear, AZ/Millennium

Coaching Staff

HEAD COACH: Jenny Palmateer (North Carolina State, 1993), 6th season at Monmouth

ASSISTANT COACH: Mark Youngs (Hope College, 1999), 3rd season at Monmouth

ASSISTANT COACH: Latara King (Florida Memorial, 2010), 2nd season at Monmouth

ASSISTANT COACH: Jamie Nash (Nebraska Omaha, 2013), 2nd season at Monmouth

DIRECTOR OF OPERATIONS: Chelsea Wolf (Ramapo, 2009), 1st season at Monmouth

Pronunciation Guide

Kayla Quintana – KIN-tana

Helena Kurt – hel-AY-nuh

Alaina Jarnot – JAR-nit

Rhaiah Spooner-Knight – RAY-uh

Adriana Zelaya – Zuh-LIE-uh

2016-17 MONMOUTH WOMEN'S BASKETBALL

MONMOUTH'S Starting Line-Ups

Date	Opponent	Guard	Guard	Forward	Forward	Center	Result
11/13/16	at Robert Morris	Kurt	Jarnot	Purvis	Barker	Mitchell	W, 69-56
11/16/16	at St. Francis Brooklyn	Kurt	Jarnot	Purvis	Barker	Mitchell	L, 87-78
11/19/16	vs Clemson	Kurt	Jarnot	Purvis	Nason	Mitchell	L, 60-47
11/26/16	Hartford	Kurt	Jarnot	Purvis	Barker	Mitchell	L, 75-72
11/27/16	at Lehigh	Kurt	Jarnot	Purvis	Barker	Mitchell	W, 73-62
12/02/16	at Niagara	Kurt	Jarnot	Purvis	Barker	Mitchell	L, 66-45
12/04/16	at Canisius	Kurt	Purvis	Barker	Nason	Mitchell	L, 74-54

MONMOUTH'S Individual Game Leaders

Date	Opponent	Result	Points	Rebounds	Assists	Steals	Blocks
11/13/16	at Robert Morris	W, 69-56	Purvis (15)	Nason (8)	Kurt/Jarnot (5)	Jarnot (3)	Mitchell (2)
11/16/16	at St. Francis Brooklyn	L, 87-78	Graham (19)	Middleton/Mitchell (6)	Kurt/Graham (6)	Kurt (6)	Middleton (3)
11/19/16	vs Clemson	L, 60-47	Purvis (17)	Nason (8)	Kurt/Jarnot (3)	Nason (3)	Purvis (3)
11/26/16	Hartford	L, 75-72	Middleton (14)	Mitchell (12)	Jarnot (5)	Mitchell (2)	Mitchell (1)
11/27/16	at Lehigh	W, 73-62	Shaw (17)	Mitchell (10)	Graham (5)	Quintana (4)	Quintana (2)
12/02/16	at Niagara	L, 66-45	Mitchell (10)	Nason/Kurt (7)	Kurt/Quintana (3)	Jarnot (3)	Mitchell (2)
12/04/16	at Canisius	L, 74-54	Nason (11)	Nason (9)	Graham (3)	Graham (3)	Mitchell (3)

2016-17 MONMOUTH WOMEN'S BASKETBALL

PLAYER CAPSULES



2 • Kayla Quintana

Junior • Guard • 5-8
Mesa, AZ (Scottsdale CC/Mesa)

	2016-17	Career (at MU)
Games Played	7	7
Games Started	0	0
Double-Doubles	0	0
Double Digit Scoring Games	1	1

Quintana's Season and Career Highs (at Monmouth)

Points	16 at Lehigh (11/27/16)
Rebounds	4, twice, last vs Hartford (11/26/16)
Assists	2 at Lehigh (11/27/16)
Blocks	2 at Lehigh (11/27/16)
Steals	4 at Lehigh (11/27/16)
Minutes	21 at Lehigh (11/27/16)

Opponent	Date	gs	min	Total		3-Pointers		Free throws		Rebounds				pf	a	t/o	blk	stl	pts	avg
				fg-fga	pct	3fg-fga	pct	ft-fta	pct	off	def	tot	avg							
at Robert Morris	11/13/16	8	1-3	.333	1-2	.500	0-0	.000	0	1	1	1.0	3	0	3	1	0	3	3.0	
at St. Francis Brooklyn	11/16/16	15	1-4	.250	0-2	.000	0-0	.000	1	3	4	2.5	2	0	1	1	0	2	2.5	
CLEMSON	11/19/16	1	0-0	.000	0-0	.000	0-0	.000	0	0	0	1.7	0	0	3	0	0	0	1.7	
vs Hartford	11/26/16	9	0-3	.000	0-2	.000	1-2	.500	1	3	4	2.3	2	0	0	0	0	1	1.5	
at Lehigh	11/27/16	21	6-7	.857	3-4	.750	1-3	.333	1	2	3	2.4	4	2	2	2	4	16	4.4	
at Niagara	12/2/16	18	1-5	.200	0-2	.000	0-0	.000	1	2	3	2.5	0	3	0	0	0	2	4.0	
at Canisius	12/04/16	11	1-4	.250	0-1	.000	0-0	.000	1	1	2	2.4	0	1	1	0	0	2	3.7	
Totals		0	83	10-26	.385	4-13	.308	2-5	.400	5	12	17	2.4	11	6	10	4	4	26	3.7

Games played: 7
Minutes/game: 11.9
Points/game: 3.7
FG Pct: 38.5
3FG Pct: 30.8

Rebounds/game: 2.4
Assists/game: 0.9
Turnovers/game: 1.4
Assist/turnover ratio: 0.6
Steals/game: 0.6



3 • Rosa Graham

Freshman • Guard • 5-7
Rochester, NY (Bishop Kearney)

	2016-17	Career
Games Played	7	7
Games Started	0	0
Double-Doubles	0	0
Double Digit Scoring Games	2	2

Graham's Season and Career Highs

Points	19 at St. Francis Brooklyn (11/16/16)
Rebounds	6 at Canisius (12/04/16)
Assists	6 at St. Francis Brooklyn (11/16/16)
Blocks	
Steals	5 at St. Francis Brooklyn (11/16/16)
Minutes	28 at Canisius (12/04/16)

Opponent	Date	gs	min	Total		3-Pointers		Free throws		Rebounds				pf	a	t/o	blk	stl	pts	avg
				fg-fga	pct	3fg-fga	pct	ft-fta	pct	off	def	tot	avg							
at Robert Morris	11/13/16	15	3-7	.429	2-3	.667	6-6	1.000	0	0	0	0.0	3	0	1	0	1	14	14.0	
at St. Francis Brooklyn	11/16/16	24	7-13	.538	3-7	.429	2-8	.250	0	1	1	0.5	2	6	0	0	5	19	16.5	
CLEMSON	11/19/16	21	1-7	.143	0-2	.000	2-5	.400	1	2	3	1.3	2	3	2	0	1	4	12.3	
vs Hartford	11/26/16	21	2-4	.500	2-3	.667	0-0	.000	1	4	5	2.3	5	3	7	0	1	6	10.8	
at Lehigh	11/27/16	19	3-8	.375	0-5	.000	2-3	.667	0	3	3	2.4	2	5	3	0	0	8	10.2	
at Niagara	12/2/16	15	0-2	.000	0-1	.000	1-2	.500	0	1	1	2.2	0	0	3	0	0	1	8.7	
at Canisius	12/04/16	28	3-9	.333	1-4	.250	2-2	1.000	1	5	6	2.7	2	3	3	0	3	9	8.7	
Totals		0	143	19-50	.380	8-25	.320	15-26	.577	3	16	19	2.7	16	20	19	0	11	61	8.7

Games played: 7
Minutes/game: 20.4
Points/game: 8.7
FG Pct: 38.0
3FG Pct: 32.0

Rebounds/game: 2.7
Assists/game: 2.9
Turnovers/game: 2.7
Assist/turnover ratio: 1.1
Steals/game: 1.6

2016-17 MONMOUTH WOMEN'S BASKETBALL

PLAYER CAPSULES



4 • Helena Kurt

Senior • Guard • 5-5
Spanga, Sweden (Igelstavikens Gymnasium)

	2016-17	Career
Games Played	7	69
Games Started	7	59
Double-Doubles	0	0
Double Digit Scoring Games	1	22

2016-17 Season Highs

Points	11 at Robert Morris (11/13/16)
Rebounds	7 at Niagara (12/02/16)
Assists	6 at St. Francis Brooklyn (11/16/16)
Blocks	
Steals	6 at St. Francis Brooklyn (11/16/16)
Minutes	27 at St. Francis Brooklyn (11/16/16)

Kurt's Career Highs

Points	23 vs. Manhattan (02/26/15)
Rebounds	7, twice, last at Niagara (12/02/16)
Assists	9, three times, last vs. Manhattan (02/26/15)
Blocks	1, two times, last vs. Fairfield (01/25/15)
Steals	6 at St. Francis Brooklyn (11/16/16)
Minutes	44 at Niagara (02/20/15)

Opponent	Date	gs	min	Total		3-Pointers		Free throws		Rebounds				pf	a	t/o	blk	stl	pts	avg
				fg-fga	pct	3fg-fga	pct	ft-fa	pct	off	def	tot	avg							
at Robert Morris	11/13/16	*	26	2-7	.286	1-3	.333	6-8	.750	0	2	2	2.0	3	5	2	0	1	11	11.0
at St. Francis Brooklyn	11/16/16	*	27	4-12	.333	1-5	.200	0-1	.000	0	2	2	2.0	4	6	2	0	6	9	10.0
CLEMSON	11/19/16	*	20	2-5	.400	2-3	.667	0-0	.000	1	1	2	2.0	3	1	4	0	0	6	8.7
vs Hartford	11/26/16	*	21	1-5	.200	1-3	.333	0-0	.000	0	1	1	1.8	5	2	3	0	1	3	7.3
at Lehigh	11/27/16	*	23	2-8	.250	0-3	.000	0-0	.000	1	3	4	2.2	2	4	5	0	0	4	6.6
at Niagara	12/2/16	*	23	1-5	.200	0-1	.000	0-0	.000	1	6	7	3.0	2	3	3	0	0	2	5.8
at Canisius	12/04/16	*	15	2-8	.250	0-2	.000	0-0	.000	1	1	2	2.9	1	1	0	0	0	4	5.6
Totals			7	14-50	.280	5-20	.250	6-9	.667	4	16	20	2.9	20	22	19	0	8	39	5.6

Games played: 7
Minutes/game: 22.1
Points/game: 5.6
FG Pct: 28.0
3EG Pct: 25.0

Rebounds/game: 2.9
Assists/game: 3.1
Turnovers/game: 2.7
Assist/turnover ratio: 1.2
Steals/game: 1.1



10 • Dana Carbone

Junior • Forward • 5-11
Toms River, NJ (Monsignor Donovan)

	2016-17	Career
Games Played	5	52
Games Started	0	0
Double-Doubles	0	0
Double Digit Scoring Games	0	4

2016-17 Season Highs

Points	6 at St. Francis Brooklyn (11/16/16)
Rebounds	2 at Niagara (12/02/16)
Assists	1 at Lehigh (11/27/16)
Blocks	
Steals	1 at Lehigh (11/27/16)
Minutes	6 at Niagara (12/02/16)

Carbone's Career Highs

Points	19 at Fairleigh Dickinson (12/20/15)
Rebounds	5 vs. Rider (02/25/16)
Assists	3, four times, last vs. Fairfield (01/30/16)
Blocks	2 at Iona (02/05/16)
Steals	3, three times, last vs. Saint Peter's (02/28/16)
Minutes	21 at Quinnipiac (01/28/16)

Opponent	Date	gs	min	Total		3-Pointers		Free throws		Rebounds				pf	a	t/o	blk	stl	pts	avg
				fg-fga	pct	3fg-fga	pct	ft-fa	pct	off	def	tot	avg							
at Robert Morris	11/13/16		dnp	-	-	-	-	-	-	-	-	-	-	-	-	-	-	-	-	-
at St. Francis Brooklyn	11/16/16		5	2-4	.500	2-4	.500	0-0	.000	0	1	1	1.0	0	0	0	0	0	6	6.0
CLEMSON	11/19/16		dnp	-	-	-	-	-	-	-	-	-	-	-	-	-	-	-	-	-
vs Hartford	11/26/16		2	0-2	.000	0-2	.000	0-0	.000	0	0	0	0.5	0	0	0	0	0	0	3.0
at Lehigh	11/27/16		4	0-3	.000	0-2	.000	0-0	.000	0	0	0	0.3	1	1	0	0	1	0	2.0
at Niagara	12/2/16		6	1-3	.333	0-2	.000	0-0	.000	1	1	2	0.8	0	0	2	0	0	2	2.0
at Canisius	12/04/16		4	0-1	.000	0-1	.000	0-0	.000	0	0	0	0.6	0	0	1	0	0	0	1.6
Totals			0	3-13	.231	2-11	.182	0-0	.000	1	2	3	0.6	1	1	3	0	1	8	1.6

Games played: 5
Minutes/game: 4.2
Points/game: 1.6

Rebounds/game: 0.6
Assists/game: 0.2
Turnovers/game: 0.6

2016-17 MONMOUTH WOMEN'S BASKETBALL

PLAYER CAPSULES



11 • Kayla Shaw

Freshman • Guard • 5-10
Scottsdale, AZ (Chaparral)

	2016-17	Career
Games Played	7	7
Games Started	0	0
Double-Doubles	0	0
Double Digit Scoring Games	3	3

Shaw's Season and Career Highs

Points.....	17 at Lehigh (11/27/16)
Rebounds.....	4 at Niagara (12/02/16)
Assists.....	2 vs Hartford (11/26/16)
Blocks.....	
Steals.....	1, twice, last at Canisius (12/04/16)
Minutes.....	23 at Niagara (12/02/16)

Opponent	Date	qs	min	Total		3-Pointers		Free throws		Rebounds				pf	a	t/o	blk	stl	pts	avg
				fg-fga	pct	3fg-fga	pct	ft-fta	pct	off	def	tot	avg							
at Robert Morris	11/13/16		14	1-4	.250	1-4	.250	0-0	.000	0	0	0	0.0	0	0	1	0	0	3	3.0
at St. Francis Brooklyn	11/16/16		16	5-10	.500	3-7	.429	1-2	.500	2	0	2	1.0	0	0	2	0	0	14	8.5
CLEMSON	11/19/16		13	1-4	.250	1-4	.250	0-0	.000	1	0	1	1.0	0	1	1	0	0	3	6.7
vs Hartford	11/26/16		18	4-10	.400	4-9	.444	0-0	.000	0	2	2	1.3	3	2	0	0	1	12	8.0
at Lehigh	11/27/16		21	6-10	.600	5-8	.625	0-0	.000	0	2	2	1.4	0	0	0	0	0	17	9.8
at Niagara	12/2/16		23	3-13	.231	3-10	.300	0-0	.000	3	1	4	1.8	1	0	2	0	0	9	9.7
at Canisius	12/04/16		17	3-10	.300	1-6	.167	0-0	.000	0	2	2	1.9	1	0	2	0	1	7	9.3
Totals		0	122	23-61	.377	18-48	.375	1-2	.500	6	7	13	1.9	5	3	8	0	2	65	9.3

Games played: 7
Minutes/game: 17.4
Points/game: 9.3
FG Pct: 37.7
3FG Pct: 37.5
FT Pct: 50.0

Rebounds/game: 1.9
Assists/game: 0.4
Turnovers/game: 1.1
Assist/turnover ratio: 0.4
Steals/game: 0.3



12 • Alaina Jarnot

Freshman • Guard • 5-7
Brooklyn Park, MN (Maranatha Christian Academy)

	2016-17	Career
Games Played	7	7
Games Started	6	6
Double-Doubles	0	0
Double Digit Scoring Games	1	1

Jarnot's Season and Career Highs

Points.....	10 at St. Francis Brooklyn (11/16/16)
Rebounds.....	4 at Robert Morris (11/13/16)
Assists.....	5, twice, last vs Hartford (11/26/16)
Blocks.....	
Steals.....	3, twice, last at Niagara (12/02/16)
Minutes.....	29 vs Hartford (11/26/16)

Opponent	Date	qs	min	Total		3-Pointers		Free throws		Rebounds				pf	a	t/o	blk	stl	pts	avg
				fg-fga	pct	3fg-fga	pct	ft-fta	pct	off	def	tot	avg							
at Robert Morris	11/13/16	*	27	3-10	.300	2-3	.667	1-2	.500	1	3	4	4.0	0	5	4	0	3	9	9.0
at St. Francis Brooklyn	11/16/16	*	20	4-9	.444	2-5	.400	0-0	.000	1	1	2	3.0	0	1	0	0	0	10	9.5
CLEMSON	11/19/16	*	27	3-11	.273	1-7	.143	1-2	.500	0	1	1	2.3	2	3	5	0	1	8	9.0
vs Hartford	11/26/16	*	29	3-10	.300	2-7	.286	0-0	.000	0	2	2	2.3	3	5	6	0	0	8	8.8
at Lehigh	11/27/16	*	18	1-8	.125	0-4	.000	0-0	.000	2	0	2	2.2	0	2	5	0	0	2	7.4
at Niagara	12/2/16	*	21	0-4	.000	0-3	.000	2-2	1.000	0	2	2	2.2	2	0	3	0	3	2	6.5
at Canisius	12/04/16		18	1-3	.333	1-2	.500	0-0	.000	0	1	1	2.0	0	2	1	0	0	3	6.0
Totals		6	160	15-55	.273	8-31	.258	4-6	.667	4	10	14	2.0	7	18	24	0	7	42	6.0

Games played: 7
Minutes/game: 22.9
Points/game: 6.0
FG Pct: 27.3
3FG Pct: 25.8

Rebounds/game: 2.0
Assists/game: 2.6
Turnovers/game: 3.4
Assist/turnover ratio: 0.8
Steals/game: 1.0

2016-17 MONMOUTH WOMEN'S BASKETBALL

PLAYER CAPSULES



13 • Tyese Purvis

Senior • Guard • 5-9
Queens, NY (Francis Lewis/Monroe C.C.)

	2016-17	Career
Games Played	7	38
Games Started	7	31
Double-Doubles	0	1
Double Digit Scoring Games	4	19

2016-17 Season Highs

Points	17 vs Clemson (11/19/16)
Rebounds	4 at Robert Morris (11/13/16)
Assists	3 vs Hartford (11/26/16)
Blocks	3 vs Clemson (11/19/16)
Steals	2 at Robert Morris (11/13/16)
Minutes	37, twice, last at Lehigh (11/27/16)

Purvis' Career Highs

Points	21 at Canisius (02/21/16)
Rebounds	10 at Colgate (11/22/15)
Assists	4, two times, last vs. Marist (01/10/16)
Blocks	3 vs Clemson (11/19/16)
Steals	3, four times, last at Canisius (02/21/16)
Minutes	37, twice, last at Lehigh (11/27/16)

Opponent	Date	gs	min	Total		3-Pointers		Free throws		Rebounds				pf	a	t/o	blk	stl	pts	avg
				fg-fga	pct	3fg-fga	pct	ft-fa	pct	off	def	tot	avg							
at Robert Morris	11/13/16	*	29	5-12	.417	2-5	.400	3-4	.750	1	3	4	4.0	1	1	2	1	2	15	15.0
at St. Francis Brooklyn	11/16/16	*	25	6-17	.353	2-11	.182	0-2	.000	0	0	0	2.0	5	2	1	0	1	14	14.5
CLEMSON	11/19/16	*	37	5-14	.357	5-12	.417	2-2	1.000	1	2	3	2.3	1	1	2	3	1	17	15.3
vs Hartford	11/26/16	*	29	2-13	.154	1-8	.125	2-4	.500	0	1	1	2.0	2	3	4	0	1	7	13.3
at Lehigh	11/27/16	*	37	4-13	.308	3-10	.300	0-0	.000	1	1	2	2.0	2	0	1	0	1	11	12.8
at Niagara	12/2/16	*	16	1-11	.091	1-9	.111	2-2	1.000	1	0	1	1.8	2	0	0	0	0	5	11.5
at Canisius	12/04/16	*	23	2-14	.143	1-8	.125	0-0	.000	2	0	2	1.9	0	0	0	0	0	5	10.6
Totals			7	25-94	.266	15-63	.238	9-14	.643	6	7	13	1.9	13	7	10	4	6	74	10.6

Games played: 7
Minutes/game: 28.0
Points/game: 10.6
FG Pct: 26.6
3FG Pct: 23.8

Rebounds/game: 1.9
Assists/game: 1.0
Turnovers/game: 1.4
Assist/turnover ratio: 0.7
Steals/game: 0.9



14 • Christina Mitchell

Senior • Forward • 6-4
Baltimore, MD (MATHS)

	2016-17	Career
Games Played	7	100
Games Started	7	50
Double-Doubles	0	11
Double Digit Scoring Games	1	17

2016-17 Season Highs

Points	10 at Niagara (12/02/16)
Rebounds	12 vs Hartford (11/26/16)
Assists	1, three time, last at Canisius (12/04/16)
Blocks	3 at Canisius (12/02/16)
Steals	2, three times, last at Niagara (11/26/16)
Minutes	26, twice, last at Niagara (12/02/16)

Mitchell's Career Highs

Points	15 vs Iona (12/07/14)
Rebounds	21 vs Siena (12/04/15)
Assists	5, two times, last vs. Canisius (02/07/16)
Blocks	6, two times, last at Manhattan (02/11/16)
Steals	3, four times, last vs. Iona (01/24/16)
Minutes	37 at Manhattan (02/11/16)

Opponent	Date	gs	min	Total		3-Pointers		Free throws		Rebounds				pf	a	t/o	blk	stl	pts	avg
				fg-fga	pct	3fg-fga	pct	ft-fa	pct	off	def	tot	avg							
at Robert Morris	11/13/16	*	21	1-2	.500	0-0	.000	0-2	.000	0	5	5	5.0	3	0	0	2	0	2	2.0
at St. Francis Brooklyn	11/16/16	*	18	0-1	.000	0-0	.000	2-2	1.000	3	3	6	5.5	3	0	2	1	2	2	2.0
CLEMSON	11/19/16	*	26	0-2	.000	0-1	.000	3-4	.750	3	1	4	5.0	3	0	3	1	0	3	2.3
vs Hartford	11/26/16	*	24	3-5	.600	0-0	.000	1-2	.500	4	8	12	6.8	3	0	0	1	2	7	3.5
at Lehigh	11/27/16	*	18	4-5	.800	0-0	.000	0-0	.000	3	7	10	7.4	3	1	1	0	2	8	4.4
at Niagara	12/2/16	*	26	5-9	.556	0-0	.000	0-0	.000	3	0	3	6.7	4	1	3	2	1	10	5.3
at Canisius	12/04/16	*	19	0-5	.000	0-1	.000	0-0	.000	0	3	3	6.1	1	1	0	3	0	0	4.6
Totals			7	13-29	.448	0-2	.000	6-10	.600	16	27	43	6.1	20	3	9	10	7	32	4.6

Games played: 7
Minutes/game: 21.7
Points/game: 4.6
FG Pct: 44.8
3FG Pct: 0.0

Rebounds/game: 6.1
Assists/game: 0.4
Turnovers/game: 1.3
Assist/turnover ratio: 0.3
Steals/game: 1.0

2016-17 MONMOUTH WOMEN'S BASKETBALL

PLAYER CAPSULES



20 • McKinzee Barker

Sophomore • Guard • 5-10
Bomont, WV (Clay County)

	2016-17	Career
Games Played	7	36
Games Started	6	34
Double-Doubles	0	0
Double Digit Scoring Games	1	2

2016-17 Season Highs

Points.....	12 vs Hartford (11/26/16)
Rebounds.....	9 vs Hartford (11/26/16)
Assists.....	2 at Robert Morris (11/13/16)
Blocks.....	
Steals.....	2, twice, last at Niagara (12/02/16)
Minutes.....	31 vs Hartford (11/26/16)

Barker's Career Highs

Points.....	14 at Colgate (11/22/15)
Rebounds.....	11 vs. Marist (01/10/16)
Assists.....	9 at Colgate (11/22/15)
Blocks.....	2, two times, last vs. Manhattan (02/02/16)
Steals.....	6 vs. Niagara (12/06/16)
Minutes.....	39 at Colgate (11/22/15)

Opponent	Date	gs	min	Total		3-Pointers		Free throws		Rebounds					pts	avg					
				fg-fga	pct	3fg-fga	pct	ft-fa	pct	off	def	tot	avg	pf			a	t/o	blk	stl	
at Robert Morris	11/13/16	*	17	1-6	.167	0-1	.000	0-0	.000	3	2	5	5.0	2	2	0	0	0	2	2.0	
at St. Francis Brooklyn	11/16/16	*	12	0-3	.000	0-0	.000	0-0	.000	1	1	2	3.5	2	1	3	0	0	0	1.0	
CLEMSON	11/19/16		9	1-3	.333	0-0	.000	0-0	.000	0	2	2	3.0	1	1	1	0	2	2	1.3	
vs Hartford	11/26/16	*	31	6-10	.600	0-2	.000	0-0	.000	3	6	9	4.5	4	1	5	0	1	12	4.0	
at Lehigh	11/27/16	*	15	1-3	.333	1-2	.500	0-0	.000	0	1	1	3.8	3	1	0	0	0	3	3.8	
at Niagara	12/2/16	*	16	1-2	.500	1-1	1.000	0-0	.000	0	3	3	3.7	3	1	1	0	2	3	3.7	
at Canisius	12/04/16	*	16	2-5	.400	0-1	.000	1-1	1.000	0	1	1	3.3	4	0	1	0	0	5	3.9	
Totals			6	116	12-32	.375	2-7	.286	1-1	1.000	7	16	23	3.3	19	7	11	0	5	27	3.9

Games played: 7
Minutes/game: 16.6
Points/game: 3.9
FG Pct: 37.5
3FG Pct: 28.6

Rebounds/game: 3.3
Assists/game: 1.0
Turnovers/game: 1.6
Assist/turnover ratio: 0.6
Steals/game: 0.7



21 • Rhaiah Spooner-Knight

Senior • Guard • 5-10
Hamilton, New Zealand (Utah Valley/Sacred Heart)

	2016-17	Career (at MU)
Games Played	0	0
Games Started	0	0
Double-Doubles	0	0
Double Digit Scoring Games	0	0

Spooner-Knight's Season and Career Highs (at Monmouth)

Points.....	
Rebounds.....	
Assists.....	
Blocks.....	
Steals.....	
Minutes.....	

2016-17 MONMOUTH WOMEN'S BASKETBALL

PLAYER CAPSULES



22 • Alexa Middleton

Freshman • Forward • 6-2
Philadelphia, PA (Abington Friends)

	2016-17	Career
Games Played	7	7
Games Started	0	0
Double-Doubles	0	0
Double Digit Scoring Games	1	1

Middleton's 2016-17 Season and Career Highs

Points	14 vs Hartford (11/26/16)
Rebounds	6, twice, last at St. Francis Brooklyn (11/16/16)
Assists	1 at Lehigh (11/27/16)
Blocks	3 at St. Francis Brooklyn (11/16/16)
Steals	1 vs Hartford (11/26/16)
Minutes	18, twice, last vs Clemson (11/19/16)

Opponent	Date	gs	min	Total		3-Pointers		Free throws		Rebounds				pf	a	t/o	blk	stl	pts	avg
				fg-fga	pct	3fg-fga	pct	ft-fga	pct	off	def	tot	avg							
at Robert Morris	11/13/16	18		3-3	1.000	0-0	.000	0-2	.000	1	5	6	6.0	1	0	2	1	0	6	6.0
at St. Francis Brooklyn	11/16/16	12		0-2	.000	0-0	.000	1-2	.500	2	4	6	6.0	4	0	1	3	0	1	3.5
CLEMSON	11/19/16	18		2-4	.500	0-0	.000	0-1	.000	1	3	4	5.3	3	0	2	0	0	4	3.7
vs Hartford	11/26/16	14		6-6	1.000	0-0	.000	2-2	1.000	0	5	5	5.3	2	0	2	0	1	14	6.3
at Lehigh	11/27/16	14		2-5	.400	0-0	.000	0-2	.000	3	0	3	4.8	4	1	2	0	0	4	5.8
at Niagara	12/2/16	9		1-3	.333	0-0	.000	0-0	.000	1	1	2	4.3	2	0	2	0	0	2	5.2
at Canisius	12/04/16	13		3-5	.600	0-0	.000	0-1	.000	3	1	4	4.3	2	0	2	0	0	6	5.3
Totals		0	98	17-28	.607	0-0	.000	3-10	.300	11	19	30	4.3	18	1	13	4	1	37	5.3

Games played: 7
Minutes/game: 14.0
Points/game: 5.3
FG Pct: 60.7
FT Pct: 30.0

Rebounds/game: 4.3
Assists/game: 0.1
Turnovers/game: 1.9
Assist/turnover ratio: 0.1
Steals/game: 0.1



23 • Adriana Zelaya

Freshman • Forward • 6-2
Goodyear, AZ

	2016-17	Career
Games Played	0	0
Games Started	0	0
Double-Doubles	0	0
Double Digit Scoring Games	0	0

Zelaya's 2016-17 Season and Career Highs

Points	
Rebounds	
Assists	
Blocks	
Steals	
Minutes	

2016-17 MONMOUTH WOMEN'S BASKETBALL

PLAYER CAPSULES



24 • Erica Balman

Sophomore • Center • 6-5
Marcellus, NY (Marcellus)

	2016-17	Career
Games Played	6	28
Games Started	0	1
Double-Doubles	0	0
Double Digit Scoring Games	0	0

2016-17 Season Highs

Points	2, twice, last at Canisius (12/04/16)
Rebounds	5 at Lehigh (11/27/16)
Assists	1 at St. Francis Brooklyn (11/16/16)
Blocks	1, twice, last at Niagara (12/02/16)
Steals	1 at Niagara (12/02/16)
Minutes	10 at Lehigh (11/27/16)

Balman's Career Highs

Points	8, two times, last at Fairfield (02/14/16)
Rebounds	10 at Quinnipiac (01/28/16)
Assists	1, three times, last at St. Francis Brooklyn (11/16/16)
Blocks	3 vs. Fairfield (03/05/16)
Steals	2 vs. Niagara (12/06/16)
Minutes	14 vs. Rider (02/25/16)

Opponent	Date	gs	min	Total		3-Pointers		Free throws		Rebounds								pts	avg	
				fg-fga	pct	3fg-fga	pct	ft-fa	pct	off	def	tot	avg	pf	a	t/o	blk			stl
at Robert Morris	11/13/16	3		0-0	.000	0-0	.000	0-0	.000	0	1	1	1.0	2	0	0	1	0	0	0.0
at St. Francis Brooklyn	11/16/16	4		0-0	.000	0-0	.000	0-0	.000	0	0	0	0.5	0	1	0	0	0	0	0.0
CLEMSON	11/19/16	dnp		-	-	-	-	-	-	-	-	-	-	-	-	-	-	-	-	-
vs Hartford	11/26/16	2		1-1	1.000	0-0	.000	0-0	.000	0	0	0	0.3	1	0	0	0	0	2	0.7
at Lehigh	11/27/16	10		0-0	.000	0-0	.000	0-0	.000	2	3	5	1.5	2	0	1	0	0	0	0.5
at Niagara	12/2/16	5		0-1	.000	0-0	.000	0-0	.000	0	0	0	1.2	0	0	0	1	1	0	0.4
at Canisius	12/04/16	7		0-1	.000	0-0	.000	2-4	.500	0	0	0	1.0	2	0	0	0	0	2	0.7
Totals		0	31	1-3	.333	0-0	.000	2-4	.500	2	4	6	1.0	7	1	1	2	1	4	0.7

Games played: 6
Minutes/game: 5.2
Points/game: 0.7
FG Pct: 33.3
FT Pct: 50.0

Rebounds/game: 1.0
Assists/game: 0.2
Turnovers/game: 0.2
Assist/turnover ratio: 1.0
Steals/game: 0.2
Minutes/game: 5.2



32 • Taylor Nason

Freshman • Forward • 5-10
Lorton, VA (South County)

	2016-17	Career
Games Played	5	5
Games Started	2	2
Double-Doubles	0	0
Double Digit Scoring Games	1	1

Nason's 2016-17 Season and Career Highs

Points	11 at Canisius (12/04/16)
Rebounds	9 at Canisius (12/04/16)
Assists	1, four times, last at Canisius (12/04/16)
Blocks	1 at Canisius (12/04/16)
Steals	3 vs. Clemson (11/19/16)
Minutes	29 at Canisius (12/04/16)

Opponent	Date	gs	min	Total		3-Pointers		Free throws		Rebounds								pts	avg	
				fg-fga	pct	3fg-fga	pct	ft-fa	pct	off	def	tot	avg	pf	a	t/o	blk			stl
at Robert Morris	11/13/16	22		2-5	.400	0-0	.000	0-0	.000	3	5	8	8.0	1	1	2	0	1	4	4.0
at St. Francis Brooklyn	11/16/16	22		0-3	.000	0-0	.000	1-2	.500	3	2	5	6.5	4	1	1	0	2	1	2.5
CLEMSON	11/19/16	* 28		0-0	.000	0-0	.000	0-2	.000	3	5	8	7.0	2	0	2	0	3	0	1.7
vs Hartford	11/26/16	dnp		-	-	-	-	-	-	-	-	-	-	-	-	-	-	-	-	-
at Lehigh	11/27/16	dnp		-	-	-	-	-	-	-	-	-	-	-	-	-	-	-	-	-
at Niagara	12/2/16	22		3-5	.600	1-1	1.000	0-2	.000	3	4	7	7.0	3	1	1	0	2	7	3.0
at Canisius	12/04/16	* 29		5-8	.625	0-0	.000	1-2	.500	7	2	9	7.4	3	1	1	1	1	11	4.6
Totals		2	123	10-21	.476	1-1	1.000	2-8	.250	19	18	37	7.4	13	4	7	1	9	23	4.6

Games played: 5
Minutes/game: 24.6
Points/game: 4.6
FG Pct: 47.6
3FG Pct: 100.0

Rebounds/game: 7.4
Assists/game: 0.8
Turnovers/game: 1.4
Assist/turnover ratio: 0.6
Steals/game: 1.8

2016-17 MONMOUTH WOMEN'S BASKETBALL

GAME 1

Official Basketball Box Score -- Game Totals -- Final Statistics
Monmouth vs Robert Morris
11/13/16 1:05 pm at Moon Township, Pa. // Sewall Center

Monmouth 69 • 1-0 (0-0 MAAC)

#	Player	Total			3-Ptr			Rebounds			PF	TP	A	TO	Blk	Stl	Min
		FG-FGA	FT-FGA	FT-FTA	FG-FGA	FT-FGA	FT-FTA	Off	Def	Tot							
04	Kurt, Helena	* 2-7	1-3	6-8	0	2	2	3	11	5	2	0	1	26			
12	Jarnot, Alaina	* 3-10	2-3	1-2	1	3	4	0	9	5	4	0	3	27			
13	Purvis, Tyese	* 5-12	2-5	3-4	1	3	4	1	15	1	2	1	2	29			
14	Mitchell, Christina	* 1-2	0-0	0-2	0	5	5	3	2	0	0	2	0	21			
20	Barker, McKinzee	* 1-6	0-1	0-0	3	2	5	2	2	2	0	0	0	17			
02	Quintana, Kayla	1-3	1-2	0-0	0	1	1	3	3	0	3	1	0	8			
03	Graham, Rosa	3-7	2-3	6-6	0	0	0	3	14	0	1	0	1	15			
11	Shaw, Kayla	1-4	1-4	0-0	0	0	0	3	3	0	1	0	0	14			
22	Middleton, Alexa	3-3	0-0	0-2	1	5	6	1	6	0	2	1	0	18			
24	Balman, Erica	0-0	0-0	0-0	0	1	1	2	0	0	1	0	0	3			
32	Nason, Taylor	2-5	0-0	0-0	3	5	8	1	4	1	2	0	1	22			
	Team				4	4	8										
	Totals	22-59	9-21	16-24	13	31	44	19	69	14	17	6	8	200			

1st - FG %:	9-21 42.9%	2nd: 4-13 30.8%	3rd: 5-15 33.3%	4th: 4-10 40.0%	Game: 22-59 37.3%	Deadball
3FG %:	2-4 50.0%	1-5 20.0%	3-7 42.9%	3-5 60.0%	9-21 42.9%	Rebounds
FT %:	2-2 100.0%	3-8 37.5%	0-0 0.0%	11-14 78.6%	16-24 66.7%	4

Robert Morris 56 • 1-1 (0-0 NEC)

#	Player	Total			3-Ptr			Rebounds			PF	TP	A	TO	Blk	Stl	Min
		FG-FGA	FT-FGA	FT-FTA	FG-FGA	FT-FGA	FT-FTA	Off	Def	Tot							
00	DASHIELL, Shakema	* 2-5	2-4	0-0	0	0	0	1	6	0	0	0	1	17			
10	NAVARRO, Rebeca	* 3-6	0-1	2-2	0	0	0	0	8	1	2	0	1	35			
11	BROWN, Janee	* 1-9	0-2	0-0	0	1	1	4	2	5	4	0	3	26			
21	MULRAIN, Mikalah	* 2-4	0-0	4-5	2	2	4	0	8	0	1	2	2	21			
22	SMITH, Megan	* 5-11	2-2	1-2	1	6	7	5	13	0	2	3	0	32			
01	JONES, Jocelynn	0-1	0-0	2-2	0	0	0	1	2	1	1	0	0	11			
03	BURTON-JONES, Jalynn	0-1	0-0	0-0	0	1	1	1	0	0	0	0	0	3			
04	STAMOLAMPROU, A Nik	4-12	1-3	2-2	0	4	4	3	11	2	6	0	0	28			
32	PLUVIOSE, Nadege	1-3	0-0	0-0	1	0	1	2	2	0	2	0	0	8			
33	EZEIGBO, Nneka	2-4	0-0	0-2	2	8	10	3	4	0	2	1	0	19			
	Team				1	6	7										
	Totals	20-56	5-12	11-15	7	28	35	20	56	9	20	6	7	200			

1st - FG %:	5-15 33.3%	2nd: 3-15 20.0%	3rd: 4-12 33.3%	4th: 8-14 57.1%	Game: 20-56 35.7%	Deadball
3FG %:	1-3 33.3%	0-3 0.0%	4-4 100.0%	2-2 100.0%	5-12 41.7%	Rebounds
FT %:	5-8 62.5%	1-1 100.0%	2-4 50.0%	1-2 50.0%	11-15 73.3%	2

Officials: Bill Titus, Pastor Torres, Cara Seggie
 Technical fouls: Monmouth-None. Robert Morris-None.
 Attendance: 573

Score by periods	1st	2nd	3rd	4th	Total
Monmouth	22	12	13	22	69
Robert Morris	16	7	14	19	56

Last FG - Monmouth 4th-03:16, RMU 4th-01:00.
 Largest lead - Monmouth by 19 3rd-05:48, RMU by 3 1st-09:51.
 Monmouth led for 37:48. RMU led for 02:02. Game was tied for 00:09.

Score tied - 0 times.
 Lead changed - 3 times.

GAME 3

Official Basketball Box Score -- Game Totals -- Final Statistics
Clemson vs Monmouth
Nov. 19 1:00 PM at OceanFirst Bank Center

Clemson 60 • 4-0

#	Player	Total			3-Ptr			Rebounds			PF	TP	A	TO	Blk	Stl	Min
		FG-FGA	FT-FGA	FT-FTA	FG-FGA	FT-FGA	FT-FTA	Off	Def	Tot							
00	Nelly Perry	f 5-18	2-9	0-0	4	3	7	4	12	2	2	0	1	31			
05	Danielle Edwards	f 5-14	3-7	6-6	3	4	7	2	19	2	2	1	4	39			
20	Sirah Diarra	g 1-3	1-2	0-0	2	4	6	0	3	0	1	0	0	8			
24	Ivy Atkims	g 0-1	0-0	0-0	1	0	1	2	0	0	1	0	1	10			
33	Alexis Carter	g 1-9	1-1	2-2	1	3	4	1	5	6	3	0	0	26			
03	Victoria Cardaci	0-1	0-1	0-0	0	1	1	2	0	0	0	0	1	19			
12	Aliyah Collier	6-8	0-1	1-2	3	6	9	4	13	0	4	2	4	30			
15	Jaia Alexander	0-1	0-0	0-0	0	1	1	3	0	0	2	0	1	5			
44	Kobi Thornton	4-6	0-0	0-0	3	3	6	1	8	0	5	0	1	32			
	Team				2	3	5										
	Totals	22-61	7-21	9-10	19	28	47	19	60	10	21	3	13	200			

1st - FG %:	7-18 38.9%	2nd: 6-16 37.5%	3rd: 4-15 26.7%	4th: 5-12 41.7%	Game: 22-61 36.1%	Deadball
3FG %:	3-7 42.9%	1-4 25.0%	1-4 25.0%	2-3 66.7%	9-10 90.0%	Rebounds
FT %:	6-6 100.0%	0-0 0.0%	3-4 75.0%	0-0 0.0%		1

Monmouth 47 • 1-2

#	Player	Total			3-Ptr			Rebounds			PF	TP	A	TO	Blk	Stl	Min
		FG-FGA	FT-FGA	FT-FTA	FG-FGA	FT-FGA	FT-FTA	Off	Def	Tot							
13	Purvis, Tyese	f 5-14	5-12	2-2	1	2	3	1	17	1	2	3	1	37			
32	Nason, Taylor	f 0-0	0-0	0-2	3	5	8	2	0	0	2	0	3	28			
14	Mitchell, Christina	c 0-2	0-1	3-4	3	1	4	3	3	0	3	1	0	26			
04	Kurt, Helena	g 2-5	2-3	0-0	1	1	2	3	6	1	4	0	0	20			
12	Jarnot, Alaina	g 3-11	1-7	1-2	0	1	1	2	8	3	5	0	1	27			
02	Quintana, Kayla	0-0	0-0	0-0	0	0	0	0	0	0	0	0	0	1			
03	Graham, Rosa	1-7	0-2	2-5	1	2	3	2	4	3	2	0	1	21			
11	Shaw, Kayla	1-4	1-4	0-0	1	0	1	0	3	1	1	0	0	13			
20	Barker, McKinzee	1-3	0-0	0-0	0	2	2	1	2	1	1	0	2	9			
22	Middleton, Alexa	2-4	0-0	0-1	1	3	4	3	4	0	2	0	0	18			
	Team				2	3	5										
	Totals	15-50	9-29	8-16	13	20	33	17	47	10	25	4	8	200			

1st - FG %:	1-15 6.7%	2nd: 5-15 33.3%	3rd: 4-10 40.0%	4th: 5-10 50.0%	Game: 15-50 30.0%	Deadball
3FG %:	1-7 14.3%	4-11 36.4%	1-4 25.0%	3-9 33.3%	9-29 31.0%	Rebounds
FT %:	2-4 50.0%	0-0 0.0%	6-12 50.0%	0-0 0.0%	8-16 50.0%	2

Officials: Albert Titus, Natasha Camy, Brian Callahan
 Technical fouls: Clemson-None. Monmouth-None.
 Attendance: 812

Score by periods	1st	2nd	3rd	4th	Total
Clemson	23	13	12	12	60
Monmouth	5	14	15	13	47

Last FG - CU 4th-01:47, MONW 4th-03:10.
 Largest lead - CU by 21 1st-01:20, MONW None.
 CU led for 39:48. MONW led for 00:00. Game was tied for 00:12.

Score tied - 0 times.
 Lead changed - 0 times.

GAME 2

Official Basketball Box Score -- Game Totals -- Final Statistics
MONW vs St. Francis Brooklyn
11/16/16 7:05 pm at Brooklyn Heights, NY

MONW 78 • 1-1

#	Player	Total			3-Ptr			Rebounds			PF	TP	A	TO	Blk	Stl	Min
		FG-FGA	FT-FGA	FT-FTA	FG-FGA	FT-FGA	FT-FTA	Off	Def	Tot							
04	Kurt, Helena	* 4-12	1-5	0-1	0	2	2	4	9	6	2	0	6	27			
12	Jarnot, Alaina	* 4-9	2-5	0-0	1	1	2	0	10	1	0	0	0	20			
13	Purvis, Tyese	* 6-17	2-11	0-2	0	0	0	5	14	2	1	0	1	25			
14	Mitchell, Christina	* 0-1	0-0	2-2	3	3	6	3	2	0	2	1	2	18			
20	Barker, McKinzee	* 0-3	0-0	0-0	1	1	2	2	0	1	3	0	0	12			
02	Quintana, Kayla	1-4	0-2	0-0	1	3	4	2	2	0	1	1	0	15			
03	Graham, Rosa	7-13	3-7	2-8	0	1	1	2	19	6	0	0	5	24			
10	Carbone, Dana	2-4	2-4	0-0	0	1	1	0	6	0	0	0	0	5			
11	Shaw, Kayla	5-10	3-7	1-2	2	2	0	14	0	2	0	0	16				
22	Middleton, Alexa	0-2	0-0	1-2	2	4	6	4	1	0	1	3	0	12			
24	Balman, Erica	0-0	0-0	0-0	0	0	0	0	0	1	0	0	0	4			
32	Nason, Taylor	0-3	0-0	1-2	3	2	5	4	1	1	1	0	2	22			
	Team				2	3	5										
	Totals	29-78	13-41	7-19	15	21	36	26	78	18	14	5	16	200			

1st - FG %:	7-19 36.8%	2nd: 7-17 41.2%	3rd: 8-19 42.1%	4th: 7-23 30.4%	Game: 29-78 37.2%	Deadball
3FG %:	3-11 27.3%	1-9 11.1%	5-10 50.0%	4-11 36.4%	13-41 31.7%	Rebounds
FT %:	2-4 50.0%	4-11 36.4%	0-0 0.0%	1-4 25.0%	7-19 36.8%	8

St. Francis Brooklyn 87 • 1-1

#	Player	Total			3-Ptr			Rebounds			PF	TP	A	TO	Blk	Stl	Min
		FG-FGA	FT-FGA	FT-FTA	FG-FGA	FT-FGA	FT-FTA	Off	Def	Tot							
04	ANDERSEN, Etta	* 2-5	1-4	0-0	0	1	1	2	5	0	2	1	0	18			
11	IOZZIA, Rachel	* 3-7	1-4	1-2	1	5	6	0	8	5	2	1	0	32			
12	PALARINO, Maria	* 3-5	0-0	5-7	6	12	18	3	11	3	3	0	0	28			
14	DELANEY, Alex	* 4-7	3-5	8-10	0	6	6	3	19	6	3	0	1	36			
35	LEVEY, Olivia	* 7-17	0-1	3-6	1	3	4	2	17	1	4						

2016-17 MONMOUTH WOMEN'S BASKETBALL

GAME 5

GAME 6

Official Basketball Box Score -- Game Totals -- Final Statistics
Monmouth vs Lehigh
 11/27/16 2:05 p.m. at Stabler Arena - Bethlehem, Pa.

Monmouth 73 • 2-3

#	Player	Total			3-Ptr			Rebounds			PF	TP	A	TO	Blk	Stl	Min
		FG-FGA	FG-FGA	FT-FTA	FG-FGA	FG-FGA	FT-FTA	Off	Def	Tot							
14	Mitchell, Christina	f	4-5	0-0	0-0	3	7	10	3	8	1	1	0	2	18		
04	Kurt, Helena	g	2-8	0-3	0-0	1	3	4	2	4	4	5	0	0	23		
12	Jarnot, Alaina	g	1-8	0-4	0-0	2	0	2	0	2	2	5	0	0	18		
13	Purvis, Tyese	g	4-13	3-10	0-0	1	1	2	2	11	0	1	0	1	37		
20	Barker, McKinzee	g	1-3	1-2	0-0	0	1	1	3	3	1	0	0	0	15		
02	Quintana, Kayla	g	6-7	3-4	1-3	1	2	3	4	16	2	2	2	4	21		
03	Graham, Rosa	g	3-8	0-5	2-3	0	3	3	2	8	5	3	0	0	19		
10	Carbone, Dana	g	0-3	0-2	0-0	0	0	0	1	0	1	0	0	1	4		
11	Shaw, Kayla	g	6-10	5-8	0-0	0	2	2	0	17	0	0	0	0	21		
22	Middleton, Alexa	g	2-5	0-0	0-2	3	0	3	4	4	1	2	0	0	14		
24	Balman, Erica	g	0-0	0-0	0-0	2	3	5	2	0	0	1	0	0	10		
Team						3	5	8									
Totals			29-70	12-38	3-8	16	27	43	23	73	17	20	2	8	200		

1st - FG %:	7-22	31.8%	2nd:	6-17	35.3%	3rd:	12-19	63.2%	4th:	4-12	33.3%	Game:	29-70	41.4%	Deadball	
3FG %:	3-13	23.1%		4-11	36.4%		4-8	50.0%		1-6	16.7%		12-38	31.6%	Rebounds	1
FT %:	0-0	0.0%		0-0	0.0%		0-4	0.0%		3-4	75.0%		3-8	37.5%		

Lehigh 62 • 4-3

#	Player	Total			3-Ptr			Rebounds			PF	TP	A	TO	Blk	Stl	Min
		FG-FGA	FG-FGA	FT-FTA	FG-FGA	FG-FGA	FT-FTA	Off	Def	Tot							
44	Williams, Mae	f	1-2	0-1	0-0	1	6	7	2	2	2	3	0	0	19		
12	Grundhoffer, Gena	c	5-14	1-3	6-6	5	4	9	3	17	2	6	0	0	36		
15	Buhr, Camryn	g	3-7	0-0	0-1	1	2	3	0	6	0	1	0	1	19		
22	Mann, Quinci	g	7-16	2-5	5-6	1	2	3	2	21	3	2	0	0	31		
20	Hedstrom, Hannah	g	1-3	0-0	1-2	0	5	5	4	3	2	2	0	2	24		
05	Devaney, Bernadette	g	2-10	0-1	2-2	1	1	2	2	6	2	0	0	2	20		
10	McCloskey, Kiernan	g	0-3	0-1	0-0	3	3	6	0	0	0	0	1	1	7		
11	Campbell, Taylor	g	0-1	0-0	0-0	0	1	1	0	0	0	2	0	0	6		
24	Menendez, Bryce	g	0-2	0-0	1-2	1	0	1	1	1	0	0	1	0	4		
25	Burton, Kayla	g	0-0	0-0	0-0	0	0	0	0	0	0	1	0	0	9		
30	Benz, Cameryn	g	1-3	0-0	0-0	1	1	2	0	2	0	4	0	0	11		
33	Pascoe, Hailey	g	1-5	1-2	1-2	1	1	2	0	4	0	2	0	0	14		
Team						5	1	6									
Totals			21-66	4-13	16-21	20	27	47	14	62	11	23	2	6	200		

1st - FG %:	5-17	29.4%	2nd:	5-17	29.4%	3rd:	10-18	55.6%	4th:	1-14	7.1%	Game:	21-66	31.8%	Deadball	
3FG %:	1-4	25.0%		0-3	0.0%		3-4	75.0%		0-2	0.0%		4-13	30.8%	Rebounds	3,2
FT %:	4-6	66.7%		7-8	87.5%		2-3	66.7%		3-4	75.0%		16-21	76.2%		

Officials: Lorraine Ellison, Dirk Link, Tasha Smith
 Technical fouls: Monmouth-None. Lehigh-None.
 Attendance: 544

Score by periods	1st	2nd	3rd	4th	Total
Monmouth	17	16	28	12	73
Lehigh	15	17	25	5	62

Official Basketball Box Score -- Game Totals -- Final Statistics
Monmouth vs Niagara
 12/2/16 7:05 PM at 'Taps' Gallagher Center

Monmouth 45 • 2-4, 0-1

#	Player	Total			3-Ptr			Rebounds			PF	TP	A	TO	Blk	Stl	Min
		FG-FGA	FG-FGA	FT-FTA	FG-FGA	FG-FGA	FT-FTA	Off	Def	Tot							
13	Purvis, Tyese	f	1-11	1-9	2-2	1	0	1	2	5	0	0	0	0	16		
20	Barker, McKinzee	f	1-2	1-1	0-0	0	3	3	3	3	1	1	0	2	16		
14	Mitchell, Christina	c	5-9	0-0	0-0	3	0	3	4	10	1	3	2	1	26		
04	Kurt, Helena	g	1-5	0-1	0-0	1	6	7	2	2	3	3	0	0	23		
12	Jarnot, Alaina	g	0-4	0-3	2-2	0	2	2	2	2	0	3	0	3	21		
02	Quintana, Kayla	g	1-5	0-2	0-0	1	2	3	0	2	3	0	0	0	18		
03	Graham, Rosa	g	0-2	0-1	1-2	0	1	1	0	1	0	3	0	0	15		
10	Carbone, Dana	g	1-3	0-2	0-0	1	1	2	0	2	0	2	0	0	6		
11	Shaw, Kayla	g	3-13	3-10	0-0	3	1	4	1	9	0	2	0	0	23		
22	Middleton, Alexa	g	1-3	0-0	0-0	1	1	2	2	2	0	2	0	0	9		
24	Balman, Erica	g	0-1	0-0	0-0	0	0	0	0	0	0	0	1	1	5		
32	Nason, Taylor	g	3-5	1-1	0-2	3	4	7	3	7	1	1	0	2	22		
Team						0	3	3									
Totals			17-63	6-30	5-8	14	24	38	19	45	9	20	3	9	200		

1st - FG %:	5-13	38.5%	2nd:	5-17	29.4%	3rd:	5-8	27.8%	4th:	2-15	13.3%	Game:	17-63	27.0%	Deadball	
3FG %:	1-5	20.0%		3-8	37.5%		2-6	33.3%		0-11	0.0%		6-30	20.0%	Rebounds	2
FT %:	2-2	100.0%		0-0	0.0%		0-0	0.0%		3-6	50.0%		5-8	62.5%		

Niagara 66 • 3-3, 1-0

#	Player	Total			3-Ptr			Rebounds			PF	TP	A	TO	Blk	Stl	Min
		FG-FGA	FG-FGA	FT-FTA	FG-FGA	FG-FGA	FT-FTA	Off	Def	Tot							
22	Rampado, Victoria	f	6-14	2-6	1-2	2	8	10	2	15	4	2	0	0	32		
44	Stroemple, Kaylee	f	4-7	0-0	4-5	3	2	5	0	12	2	3	0	1	31		
03	Corseili, Tiffany	g	3-6	0-1	0-0	1	0	1	4	6	2	1	0	3	14		
10	Sherburne, Jamie	g	2-7	0-2	2-2	0	5	2	6	1	3	0	0	0	29		
24	Baughman, Morgan	g	3-5	3-5	0-0	1	1	2	0	9	4	2	0	0	24		
01	Cosey, Carolyn	g	0-1	0-0	2-2	0	0	0	3	2	2	1	0	1	6		
04	Moore, Jai	g	0-7	0-0	0-0	0	4	4	0	0	0	2	0	0	13		
11	Bryant, Kharysma	g	0-0	0-0	0-0	0	2	2	0	0	0	1	0	0	3		
21	McIntyre, Maggie	g	3-5	2-4	2-2	0	2	2	0	10	1	2	0	0	29		
25	Granruth, Emily	g	1-2	0-1	0-0	1	1	2	0	2	0	1	0	0	3		
33	Davidsdottir, Dagny	g	1-3	0-0	2-2	1	1	2	3	4	1	2	0	1	16		
Team						2	7	9									
Totals			23-57	7-19	13-15	11	33	44	14	66	17	20	0	6	200		

1st - FG %:	8-16	50.0%	2nd:	8-14	57.1%	3rd:	4-13	30.8%	4th:	3-14	21.4%	Game:	23-57	40.4%	Deadball	
3FG %:	2-3	66.7%		3-8	37.5%		2-6	33.3%		0-2	0.0%		7-19	36.8%	Rebounds	1
FT %:	3-3	100.0%		0-0	0.0%		4-6	66.7%		6-6	100.0%		13-15	86.7%		

Officials: Kenneth Kelly, Michael Motta, Chad Titus
 Technical fouls: Monmouth-None. Niagara-None.
 Attendance: 335
 Nia: McIntyre career high 10 pts.

Score by periods	1st	2nd	3rd	4th	Total
Monmouth	13	13	12	7	45
Niagara	21	19	14	12	66

GAME 7

Official Basketball Box Score -- Game Totals -- Final Statistics
Monmouth vs Canisius
 12/04/16 2 p.m. at Buffalo, N.Y. - Koessler Athletic Center

Monmouth 54 • 2-5, 0-2 MAAC

#	Player	Total			3-Ptr			Rebounds			PF	TP	A	TO	Blk	Stl	Min
		FG-FGA	FG-FGA	FT-FTA	FG-FGA	FG-FGA	FT-FTA	Off	Def	Tot							
13	Purvis, Tyese	f	2-14	1-8	0-0	2	0	2	0	5	0	0	0	0	23		
20	Barker, McKinzee	f	2-5	0-1	1-1	0	1	1	4	5	0	1	0	0	16		
32	Nason, Taylor	f	5-8	0-0	1-2	7	2	9	3	11	1	1	1	1	29		
14	Mitchell, Christina	c	0-5	0-1	0-0	0	3	3	1	0	1	0	3	0	19		
04	Kurt, Helena	g	2-8	0-2	0-0	1	1	2	1	4	1	0	0	0	15		
02	Quintana, Kayla	g	1-4	0-1	0-0	1	1	2	0	2	1	1	0	0	11		
03	Graham, Rosa	g	3-														

2016-17 MONMOUTH WOMEN'S BASKETBALL

2016-17 Overall Season Stats

2016-17 Monmouth WBB Monmouth Combined Team Statistics (as of Dec 04, 2016) All games

RECORD:	OVERALL	HOME	AWAY	NEUTRAL
ALL GAMES	2-5	0-1	2-3	0-1
CONFERENCE	0-2	0-0	0-2	0-0
NON-CONFERENCE	2-3	0-1	2-1	0-1

#	Player	gp-gs	min	avg	Total		3-Point		F-Throw		Rebounds				pf	dq	a	to	blk	stl	pts	avg			
					fg-fga	fg%	3fg-fga	3fg%	ft-fta	ft%	off	def	tot	avg											
13	Purvis, Tyese	7-7	196	28.0	25-94	.266	15-63	.238	9-14	.643	6	7	13	1.9	13	1	7	10	4	6	74	10.6			
11	Shaw, Kayla	7-0	122	17.4	23-61	.377	18-48	.375	1-2	.500	6	7	13	1.9	5	0	3	8	0	2	65	9.3			
03	Graham, Rosa	7-0	143	20.4	19-50	.380	8-25	.320	15-26	.577	3	16	19	2.7	16	1	20	19	0	11	61	8.7			
12	Jarnot, Alaina	7-6	160	22.9	15-55	.273	8-31	.258	4-6	.667	4	10	14	2.0	7	0	18	24	0	7	42	6.0			
04	Kurt, Helena	7-7	155	22.1	14-50	.280	5-20	.250	6-9	.667	4	16	20	2.9	20	1	22	19	0	8	39	5.6			
22	Middleton, Alexa	7-0	98	14.0	17-28	.607	0-0	.000	3-10	.300	11	19	30	4.3	18	0	1	13	4	1	37	5.3			
14	Mitchell, Christina	7-7	152	21.7	13-29	.448	0-2	.000	6-10	.600	16	27	43	6.1	20	0	3	9	10	7	32	4.6			
20	Barker, McKinzee	7-6	116	16.6	12-32	.375	2-7	.286	1-1	1.000	7	16	23	3.3	19	0	7	11	0	5	27	3.9			
02	Quintana, Kayla	7-0	83	11.9	10-26	.385	4-13	.308	2-5	.400	5	12	17	2.4	11	0	6	10	4	4	26	3.7			
32	Nason, Taylor	5-2	123	24.6	10-21	.476	1-1	1.000	2-8	.250	19	18	37	7.4	13	0	4	7	1	9	23	4.6			
10	Carbone, Dana	5-0	21	4.2	3-13	.231	2-11	.182	0-0	.000	1	2	3	0.6	1	0	1	3	0	1	8	1.6			
24	Balman, Erica	6-0	31	5.2	1-3	.333	0-0	.000	2-4	.500	2	4	6	1.0	7	0	1	1	2	1	4	0.7			
Team											17	27	44												1
Total.....		7	1400		162-462	.351	63-221	.285	51-95	.537	101	181	282	40.3	150	3	93	135	25	62	438	62.6			
Opponents.....		7	1400		169-417	.405	43-109	.394	99-135	.733	83	220	303	43.3	116	-	104	145	23	54	480	68.6			

TEAM STATISTICS	MONW	OPP	Date	Opponent	Score	Att.
SCORING	438	480	11/13/16	at Robert Morris	w 69-56	573
Points per game	62.6	68.6	11/16/16	at St. Francis Brooklyn	L 78-87	335
Scoring margin	-6.0	-	11/19/16	CLEMSON	L 47-60	812
FIELD GOALS-ATT	162-462	169-417	11/26/16	vs Hartford	L 72-75	629
Field goal pct	.351	.405	11/27/16	at Lehigh	w 73-62	544
3 POINT FG-ATT	63-221	43-109	* 12/2/16	at Niagara	L 45-66	335
3-point FG pct	.285	.394	* 12/04/16	at Canisius	L 54-74	760
3-pt FG made per game	9.0	6.1	* - Conference game			
FREE THROWS-ATT	51-95	99-135				
Free throw pct	.537	.733				
F-Throws made per game	7.3	14.1				
REBOUNDS	282	303				
Rebounds per game	40.3	43.3				
Rebounding margin	-3.0	-				
ASSISTS	93	104				
Assists per game	13.3	14.9				
TURNOVERS	135	145				
Turnovers per game	19.3	20.7				
Turnover margin	+1.4	-				
Assist/turnover ratio	0.7	0.7				
STEALS	62	54				
Steals per game	8.9	7.7				
BLOCKS	25	23				
Blocks per game	3.6	3.3				
ATTENDANCE	812	3176				
Home games-Avg/Game	1-812	5-509				
Neutral site-Avg/Game	-	1-629				

Score by Periods	1st	2nd	3rd	4th	Totals
Monmouth	113	99	119	107	438
Opponents	132	121	127	100	480

2016-17 MONMOUTH WOMEN'S BASKETBALL



2016-17 TV-Radio Spot Chart



2

Kayla Quintana
Junior * Guard
Mesa, AZ



3

Rosa Graham
Freshman * Guard
Rochester, NY



4

Helena Kurt
Senior * Guard
Spanga, Sweden



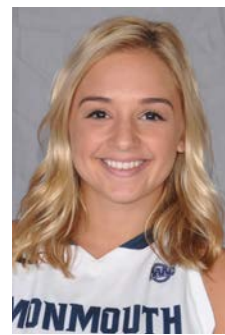
10

Dana Carbone
Junior * Forward
Toms River, NJ



11

Kayla Shaw
Freshman * Guard
Scottsdale, AZ



12

Alaina Jarnot
Freshman * Guard
Brooklyn Park, MN



13

Tyese Purvis
Senior * Guard
Queens, NY



14

Christina Mitchell
Senior * Forward
Baltimore, MD



20

McKinzee Barker
Sophomore * Guard
Bomont, WV



21

Rhaiah Spooner-Knight
Senior * Guard
Hamilton, New Zealand



22

Alexa Middleton
Freshman * Forward
Philadelphia, PA



23

Adriana Zelaya
Freshman * Forward
Goodyear, AZ



24

Erica Balman
Sophomore * Center
Marcellus, NY



32

Taylor Nason
Freshman * Forward
Lorton, VA



Jenny Palmateer
Head Coach
6th Season
North Carolina State '93



Mark Youngs
Assistant Coach
3rd Season
Hope College '99



Latara King
Assistant Coach
2nd Season
Florida Memorial '10



Jamie Nash
Assistant Coach
2nd Season
Nebraska Omaha '13