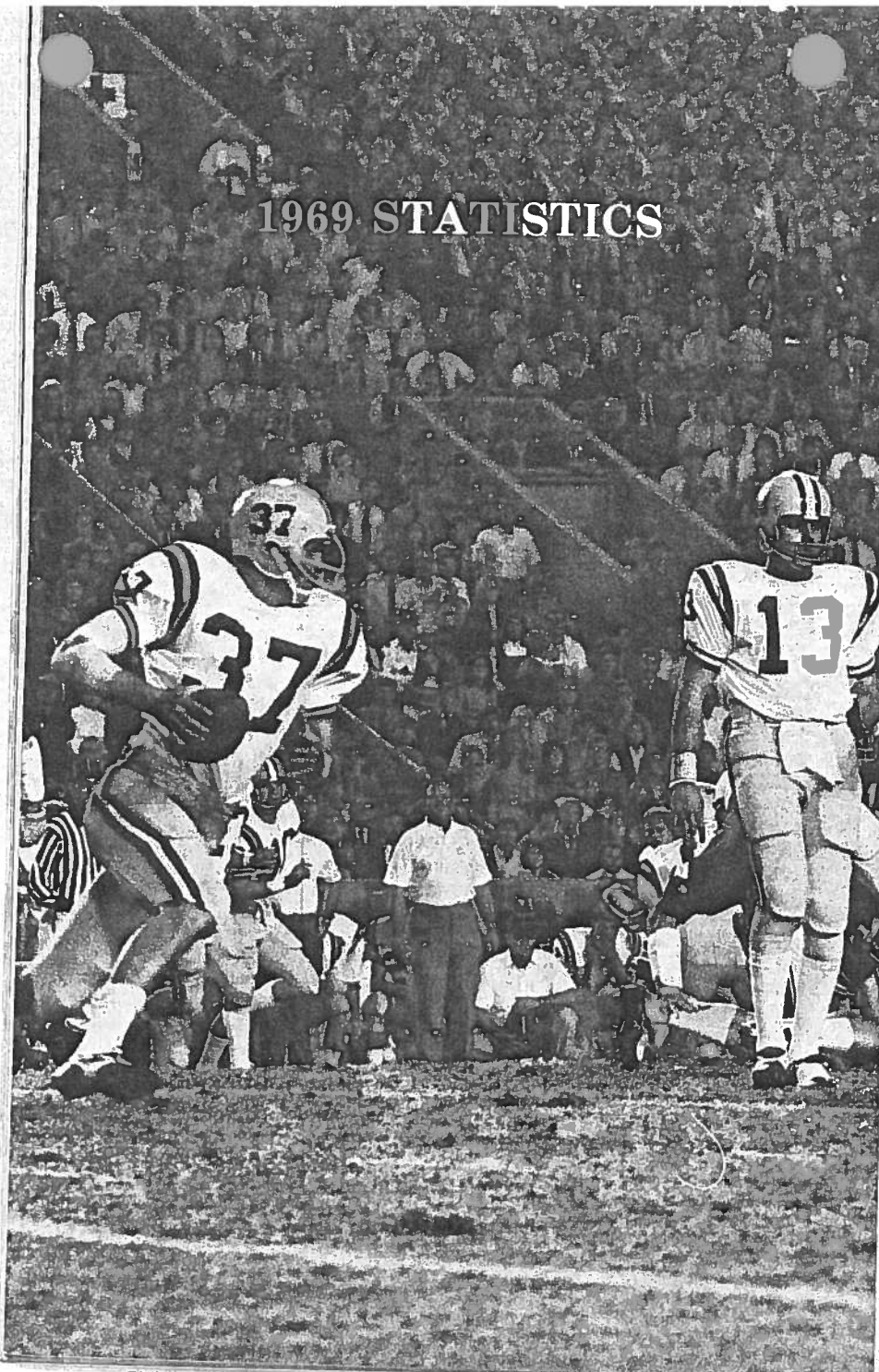


Season Record: 9-1-0 SEC: 4-1-0

1969 STATISTICS



1969 Results

LSU 35, Texas A&M 6
 LSU 42, Rice 0
 LSU 63, Baylor 8
 LSU 20, Miami 0
 LSU 37, Kentucky 10
 LSU 21, Auburn 20
 Ole Miss 26, LSU 23
 LSU 20, Alabama 15
 LSU 61, Mississippi State 6
 LSU 27, Tulane 0

Attendance

67,478 (home)
 55,219 (away)
 64,151 (home)
 41,972 (away)
 37,500 (away)
 63,516 (home)
 46,332 (away)
 67,590 (home)
 59,746 (home)
 67,980 (home)

RUSHING	Att.	Gain	Loss	Net		
				Yards	Avg.	LP
Ray, fb	115	591	5	586	5.1	22
Shorey, tb	118	485	26	459	3.9	24
Gilbert, tb	85	337	12	325	3.8	30
Walker, tb	45	179	10	169	3.8	20
Cantrelle, tb	17	103	0	103	6.1	30
Lee, qb	47	185	82	103	2.2	18
Casanova, tb	24	108	7	101	4.2	27-TD
Percy, fb	23	93	1	92	4.0	15
West, sb	17	86	8	78	4.6	16
Duhe, qb	35	121	59	62	1.8	23
Hamilton, sb	13	68	17	51	3.9	14-TD
Hillman, qb	41	168	123	45	1.1	21
Lumpkin, tb	5	24	0	24	4.8	10
Bland, fb	3	6	0	6	2.0	4
Donohue, qb	2	0	2	-	-	-
TEAM TOTALS	591	2,555	353	2,202	3.7	30
Opp. Totals	353	906	532	384	1.1	33

PASSING	Att.	Comp.	Pct.	HI	Yds.	TD	LP
Hillman, qb	167	93	.557	9	1,180	8	37-TD
Lee, qb	76	37	.486	4	470	3	40
Duhe, qb	22	8	.363	0	175	2	45
Gilbert, tb	2	1	.500	0	62	1	62-TD
Ray, fb	1	0	.000	0	0	0	-
Donohue, qb	1	0	.000	0	0	0	-
TEAM TOTALS	269	139	.516	13	1,887	14	62-TD
Opp. Totals	361	166	.459	18	1,896	8	57

TOTAL OFFENSE	Plays	Avg.		
		Rush	Pass	Tot. Yds. Play-Game
Hillman, qb	208	45	1180	5.9-122.5
Ray, fb	116	586	0	5.1- 58.6
Lee, qb	123	103	470	4.7- 57.3
TEAM TOTALS	860	2202	1887	4.8-408.9
Opp. Totals	714	384	1896	3.2-228.0

RECEIVING	No.	Yds.	Avg.	TD	LP
Myles, se	43	559	13.0	4	40
West, sb	25	283	11.3	2	30
Stober, te	23	316	13.7	1	22
Hamilton, sb	16	271	16.9	3	62-TD
Martin, se	9	173	19.2	1	45
Ray, fb	6	42	7.0	1	9
Toms, te	3	56	18.7	1	26-TD
Shorey, tb	3	50	16.7	0	21
Casanova, tb	2	38	19.0	0	32
Gilbert, tb	2	26	13.0	0	20
J. Michaelson, te	2	21	10.5	0	12
Kavanaugh, se	2	19	9.5	0	10
Walker, tb	2	10	5.0	0	5
Cantrelle, tb	1	23	23.0	1	23-TD
TEAM TOTALS	139	1,887	13.6	14	62-TD
Opp. Totals	166	1,896	11.4	8	57

PUNTING	No.	Yds.	Avg.	LP
Ray, fb	63	2,581	41.0	64
Earley, cb	2	91	45.5	49
TEAM TOTALS	65	2,673	41.1	64
Opp. Totals	83	3,264	39.3	64

FUMBLE RECOVERIES: Sage and Casanova, three each; Millican, Kober and Bozeman, two each; West, Foret, King, Bevan, Earley and Davis, one each.

INDIVIDUAL SCORING	TP	TD	FG	KICK	2 PT.
Lumpkin, ks-tb	62	0	13-8	44-38	0-0
Hamilton, sb	42	7	0-0	0-0	0-0
Ray, fb	32	5	0-0	0-0	1-1
Hillman, qb	30	5	0-0	0-0	0-0
West, sb	30	5	0-0	0-0	0-0
Shorey, tb	24	4	0-0	0-0	0-0
Myles, se	24	4	0-0	0-0	0-0
Casanova, tb-cb	18	3	0-0	0-0	0-0
Gilbert, tb	18	3	0-0	0-0	1-0
Duhe, qb	13	2	3-0	1-1	0-0
Walker, tb	12	2	0-0	0-0	0-0
Cantrelle, tb	12	2	0-0	0-0	0-0
Stober, te	6	1	0-0	0-0	0-0
Toms, te	6	1	0-0	0-0	0-0
Martin, se	6	1	0-0	0-0	0-0
Addison, s	6	1	0-0	0-0	0-0
Frye, lb	6	1	0-0	0-0	0-0
TEAM TOTALS	349	47	16-8	45-39	2-1
Opp. Totals	91	13	9-2	5-3	8-2

PUNT RETURNS	No.	Yds.	Avg.	TD	LP
Casanova, cb	23	263	11.4	1	68-TD
Burns, s	17	220	12.9	0	68
Bevan, lb	5	22	4.4	0	12
Nagle, cb	1	6	6.0	0	6
TEAM TOTALS	46	511	11.1	1	68-TD
Opp. Totals	23	158	6.9	0	43

KICKOFF RETURNS	No.	Yds.	Avg.	TD	LP
Casanova, cb	5	126	25.2	0	35
Burns, s	6	103	17.2	0	32
Ray, fb	4	54	13.5	0	21
West, sb	4	35	7.8	0	13
Linemen	4	0	0.0	0	—
TEAM TOTALS	23	318	13.8	0	35
Opp. Totals	59	1,000	16.9	0	66

INTERCEP. RETURNS	No.	Yds.	Avg.	TD	LP
Earley, cb	3	27	9.0	0	27
Norsworthy, s	3	22	7.3	0	12
Casanova, cb	3	18	6.0	0	18
Addison, s	2	25	12.5	1	17
Anderson, lb	2	6	3.0	0	5
Burns, s	2	0	0.0	0	0
Frye, lb	1	42	42.0	1	42
Millican, de	1	8	8.0	0	8
Thomason, lb	1	7	7.0	0	7
TEAM TOTALS	18	155	8.6	2	42
Opp. Totals	13	138	10.6	0	43

TEAM STATISTICS:

	LSU	Opp.
Total Points	349	91
Game Average	34.9	9.1
SEC Average	32.4	15.4
Total Touchdowns	47	13
By Rushing	30	5
By Passing	14	8
By Return	3	0
Total First Downs	235	127
By Rushing	131	34
By Passing	93	86
By Penalty	11	7
Net Yards Rushing	2,202	389
Rushing Plays	591	353
Avg. Gain per Rush	3.7	1.1
Avg. Gain per Game	220.2	38.9
Net Yards Passing	1,887	1,896
Passing Plays	269	361
Avg. Gain per Pass	7.0	5.3
Avg. Gain per Game	188.7	189.6
Total Offense	4,089	2,280
No. of Plays	860	714
Avg. Gain per Play	4.8	3.2
Avg. Gain per Game	408.9	228.0
Penalties—Yds. Pen.	37-379	34-342
Fumbles—Fumbles Lost	30—15	33—18