

LINCOLN WAY

CENTER DRIVE

SOUTH 4TH STREET

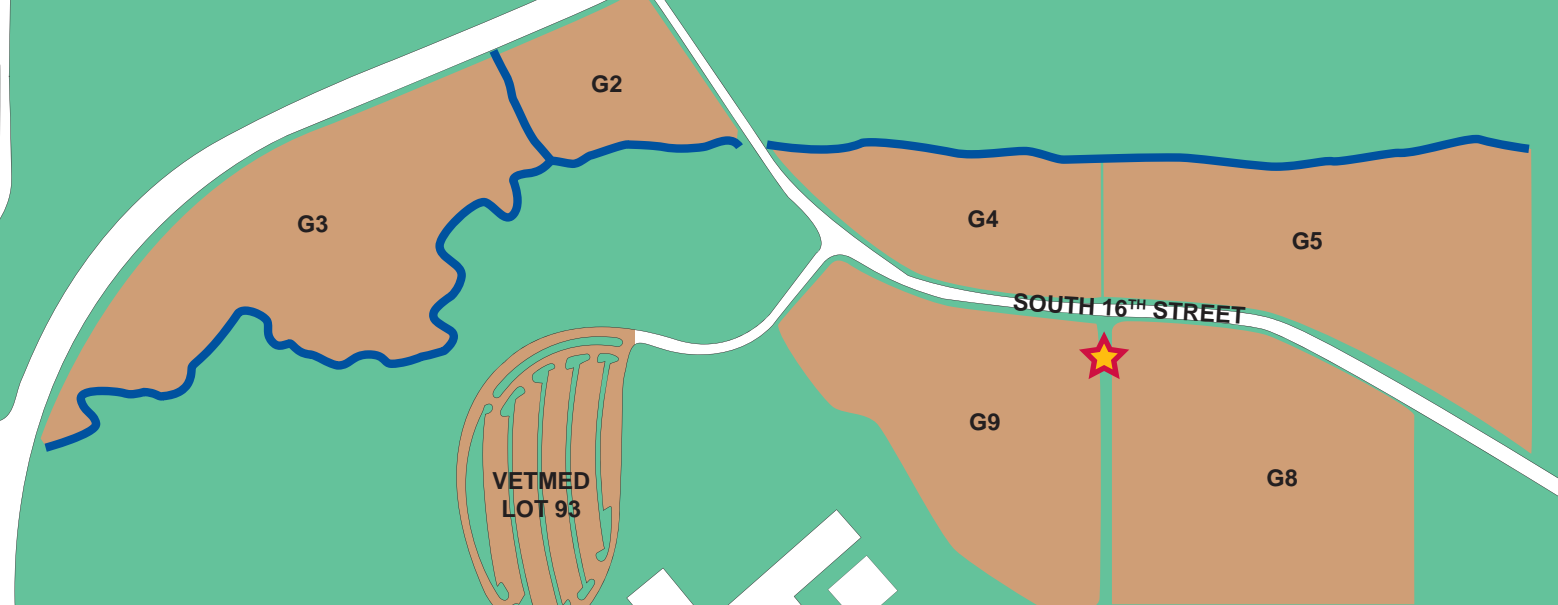
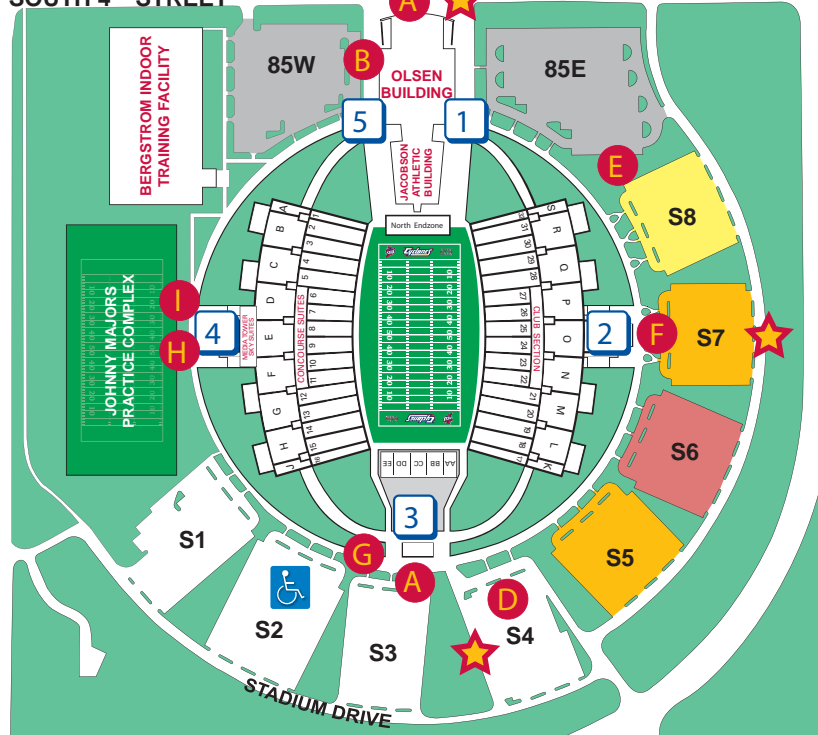
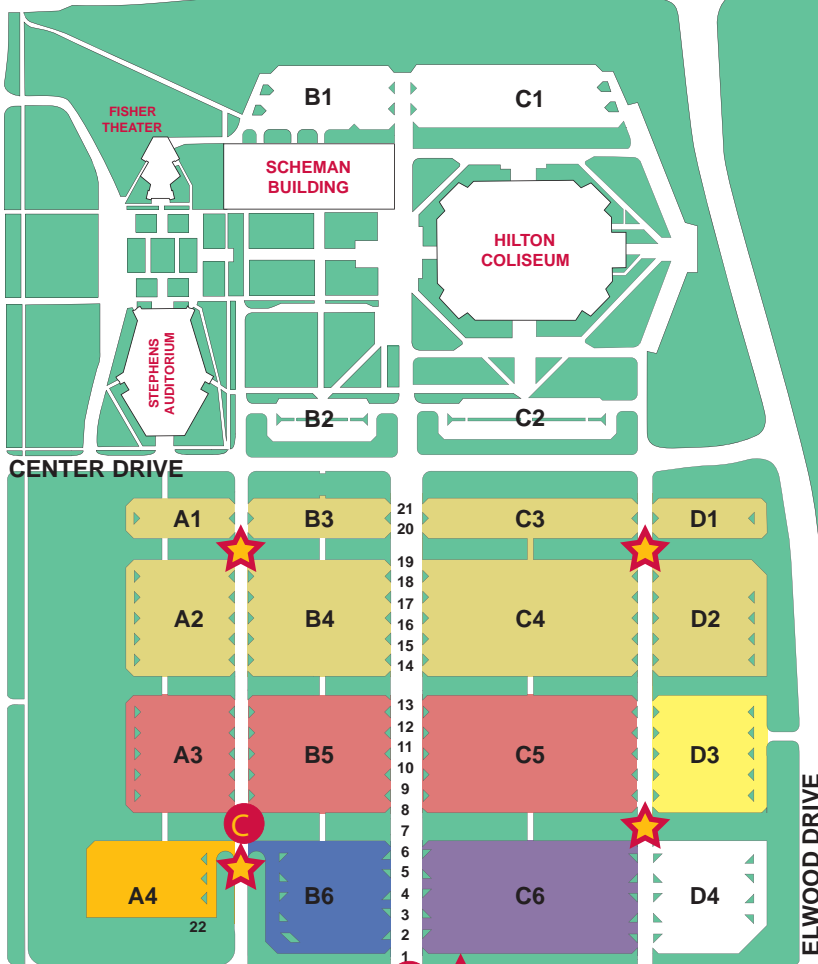
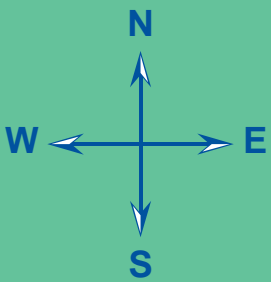
ELWOOD DRIVE

STADIUM DRIVE

MORTENSEN PARKWAY

ELWOOD DRIVE

HIGHWAY 30



PARKING INFORMATION:

- Director & Victory**
(85W & 85E)
- Captains & Above**
(Lot C6)
- Gold Plus & Above**
(Lot B6)
- Gold & Above**
(Lot A4, S5, S7)
- Cardinal & Above**
(Lot A3, B5, C5, S6)
- Cardinal & Below**
(Lots, A1, A2, B3, B4, C3, C4, D1, D2)
(Season-ticket holders only)
- RV Parking:**
Passes will be distributed based on NCC membership level and availability.
Non-season ticket holders must be at the Cardinal level & Above.
(Lot D3 & S8)
- General Public Parking**
(Lot: G2, G3, G4, G5, G6, G7, G8, G9, 93)
- Medical Accessible Parking**
(Lot S2)

National Cyclone Club members who receive a season parking pass for football will park in the lots north and east of Jack Trice Stadium. Club members who want to park in the general public lots will be required to pay the public rate. Donors with RVs or buses are required to park in lot D3 or S8, depending on membership level and availability.

Public Parking Prices

All public parking, including recreational vehicles, will be directed to park in the grass lots located south and east of Elwood Drive. Limited parking will be available in lot 93 (Veterinary Medicine College), located off of South 16th Street.

Paved Parking (Cars Only)

S2 (Medical Accessible Only)
\$10

Grass Parking

Cars	\$10
RV/Bus	\$30

Charter Buses - \$30

Charter bus parking will be located on a first come, first serve basis on Stadium Drive south of Lots S4, S3, & S2. Please contact Nick Britton, Director of Event Management at 515.294.5001 for arrangements.

- A **Game Day Ticket Sales**
Located on South 4th Street and outside Gate 3
- B **Public Will-Call & Ticket Office**
- C **ATM**
- D **Cyclone Experience**
Located in Lot S4 South of the Stadium
- E **Cy's Clubhouse**
National Cyclone Club Members Only
Located between 85E & S8
- F **Iowa State Player/Guest Pick-up**
Located outside Gate 2
- G **Media Will-Call**
Located outside Gate 3
- H **Visiting Team Player/Guest Pick-up**
Located outside Gate 4
- I **High School Coaches Pick-up**
Located outside Gate 4
- ★ **Cyclone Trolley stops**